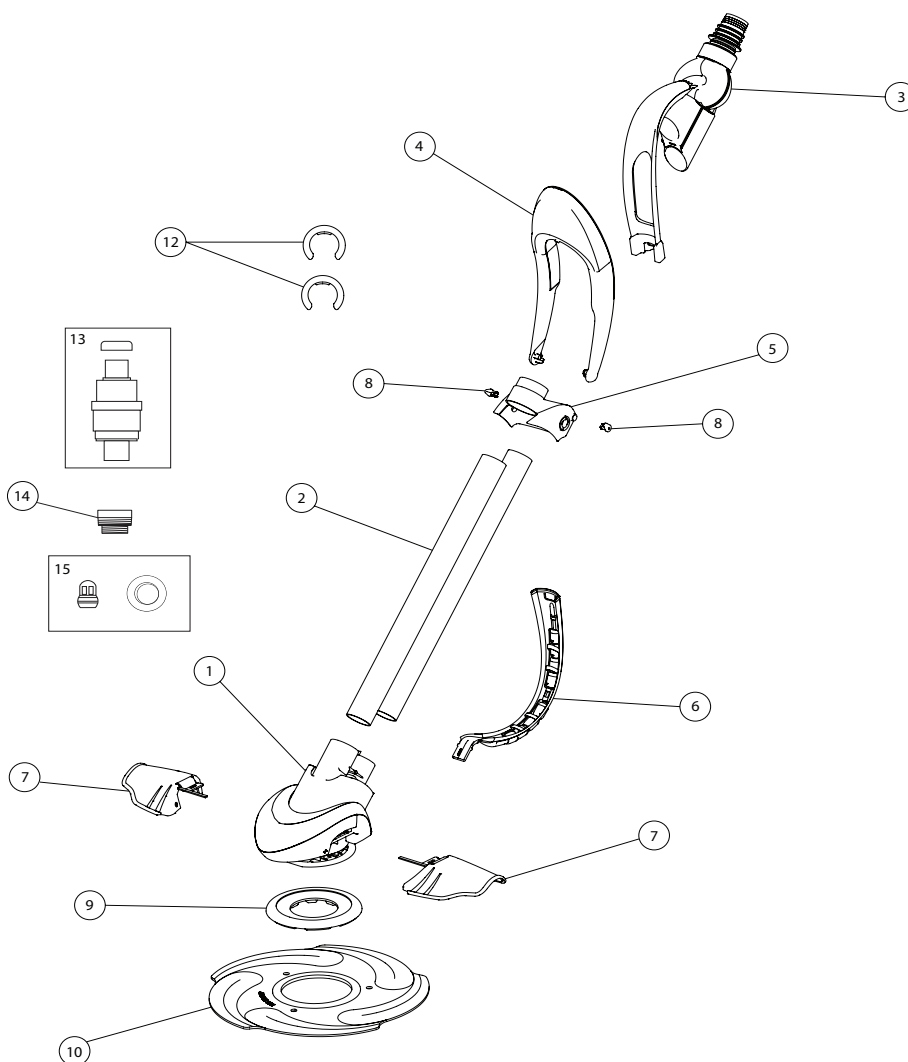


REPLACEMENT PARTS



Item Number	P/N	DESCRIPTION
1	370500Z	Main Body Motor Housing
2	370486Z	Drive Tube (contains 1 tube)
3	370496Z	Swivel Assembly
4	370497Z	Dive Float
5	370498Z	Weight Holder (includes dive float restrictor set)
6	370499Z	Bumper Assembly
7	370492Z	Wing Set
8	370482Z	Dive Float Restrictor Set (contains 2)
9	K12059	Foot Pad
10	370478Z	Flat Seal

Item Number	P/N	DESCRIPTION
11*	370483Z	Pleated Seal
12	370494Z	Hose Weight (contains 2)
13	K12004	Automatic Regulator Valve and Valve Cap Kit
14	K12079	Threaded Compression Adapter
15	K121680	Eyeball Diverter and Outer Ring
16*	370524	20pc Male/Female Hose Set 40"
17*	370533	12pc Male/Female Hose Set 32"
18*	370521	12pc Male/Female Hose Set 40"
19*	370536Z	Hose Female/Female 370536 4"

Note: (*) Not Shown