

# POOL ROVER SERIES 2

ROBOTIC POOL CLEANER

PLEASE READ CAREFULLY BEFORE  
USING YOUR POOL CLEANER

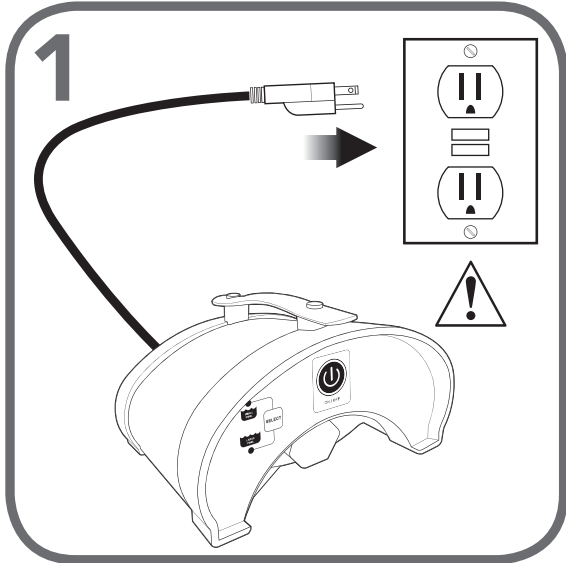
Aqua Products, Inc  
282 Grove Avenue  
Cedar Grove, NJ 07009  
United States



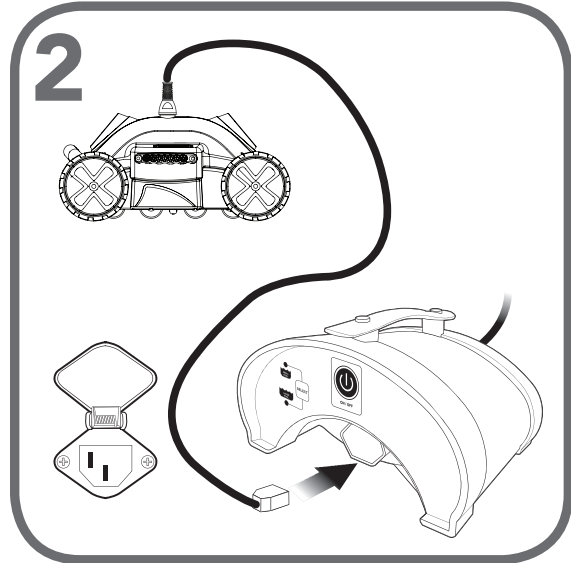
QUICK START  
GUIDE

**aquabot**  
KEEPERS OF PURE

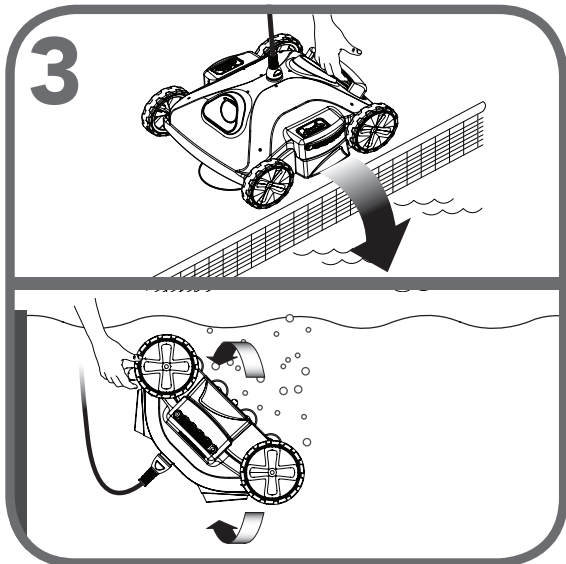
## QUICK START INSTRUCTIONS (Steps 1-5)



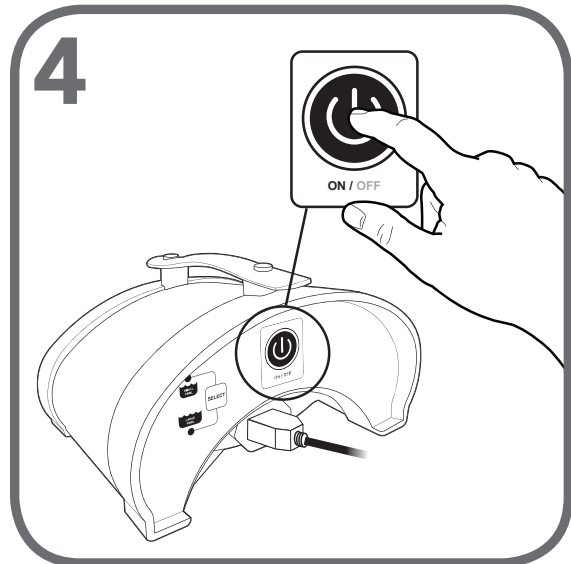
Plug the power supply into a GFCI outlet (Ground Fault Circuit Interrupter)



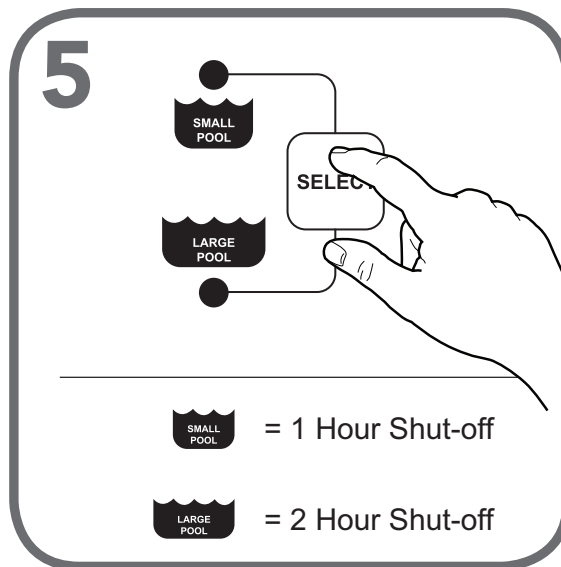
Straighten out the floating cable. Then lift the flap on the power supply. Plug in the cable.



Place the cleaner in your pool and turn upside down to remove any air bubbles.

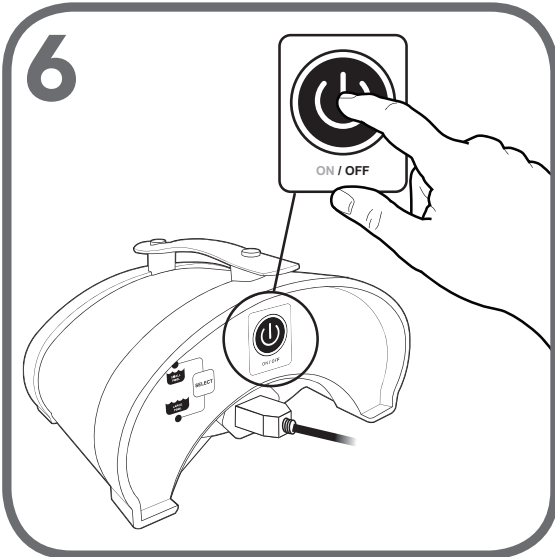


Turn power supply ON

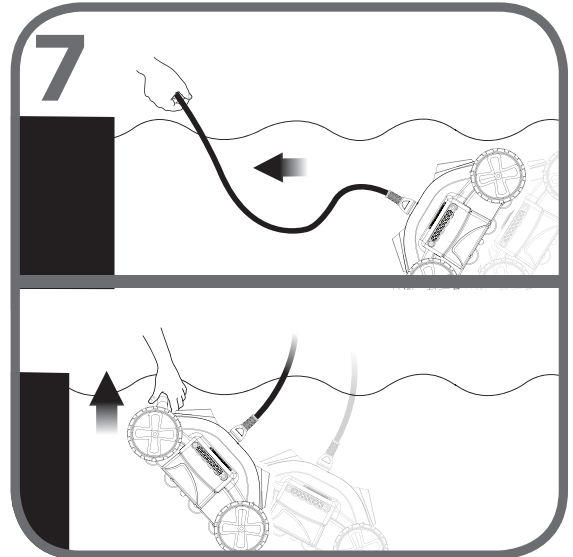


Set the timer and let the cleaner go!

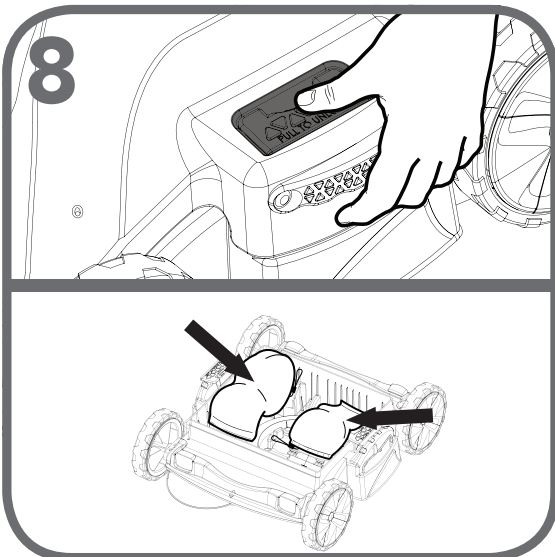
# ROBOT REMOVAL and FILTER BAG CLEANING INSTRUCTIONS (Steps 7-11)



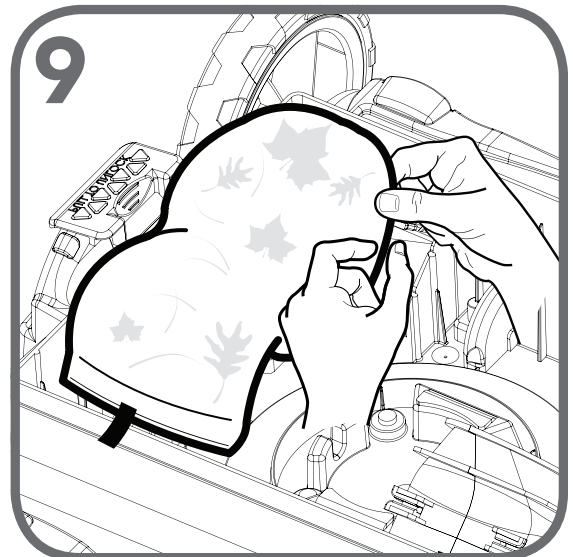
Make sure that the power supply is turned OFF



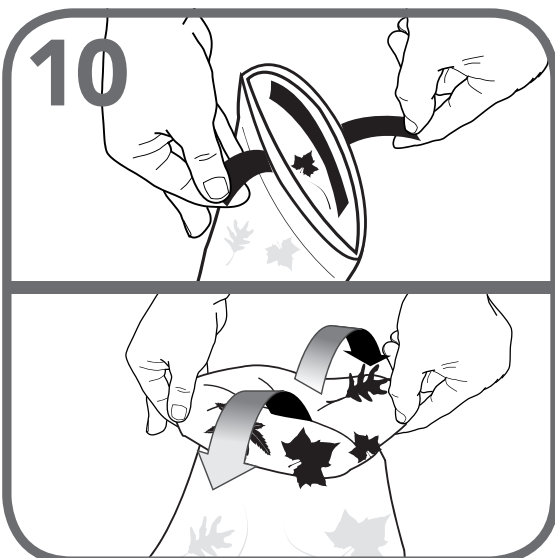
Gently pull cleaner to edge using the E-Z Swivel. Lift unit out with handle and let the water drain.



Push tabs down and outward to remove the cover. This will remove the cover and expose the filter bags.



Remove filter bags from inside cleaner by gently pulling on the elastic band around the suction ports.



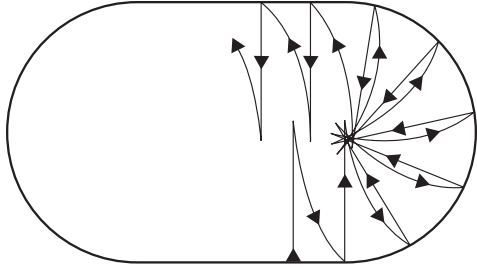
Pull tabs to undo Velcro® and turn the filter bag inside out



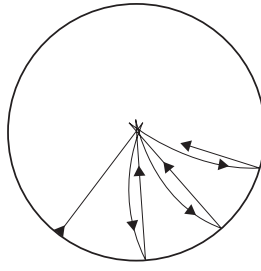
Use a garden hose to clean filter bag.

## CLEANING PATTERN

This is the anticipated cleaning pattern for your unit. Please be aware that different pool shapes will cause a slight deviation of this pattern. In general this is what should be expected.



Longer width pools



Circular pools

## TROUBLESHOOTING

These are the most common questions you might have regarding your unit. For more detailed troubleshooting, see the Troubleshooting Guide included in the packaging.

### My unit is not sucking up debris:

- Make sure the filter bag is clean.
- Check to see that you've properly set-up the unit and power supply
- Check to see if the propeller is stuck
- Adjust height of the suction ports on the bottom of the unit (see Figure B below)

### All LED lights are blinking on the power supply:

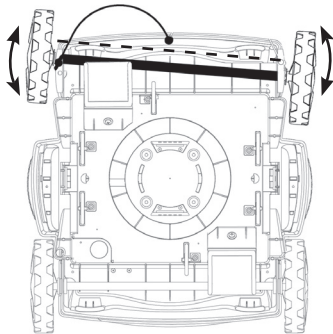
- Check to see if the unit is out of water
- Check to see if the filter bag is stuck in the screen
- Check to see if the propeller is stuck
- To restart, press the power button once. Cleaning program will resume from where it left off.

### The Floating Cable gets tangled:

- Change the axle set-up (see Figure A below). Unit is most likely turning too sharply. Use the E-Z Swivel to straighten out the cable (see Figure C below)

### Unit is stuck in the middle of the pool but the unit still pumps out water:

- Check to see that there is nothing obstructing the cleaner or that the cleaner is not stuck on any loose objects in the pool.
- The suction ports are far too low to the pool bottom. Adjust as necessary. (see Figure B)



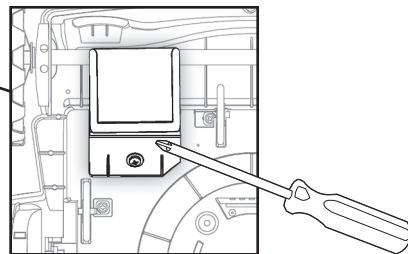
**Figure A (bottom view):**

By changing the axle set-up using the pins underneath your cleaner, you can adjust how tight or wide the cleaner turns. This can also be used to help untangle the floating cable by forcing the unit to run a reverse pattern.

See the Setting and Troubleshooting Guide for more detailed configurations.

**Figure B (bottom view):**

Changing the height of the suction ports can be done by loosening the screws on the bottom of the cleaner using a Phillips head screwdriver and adjusting the ports.



## WARNINGS



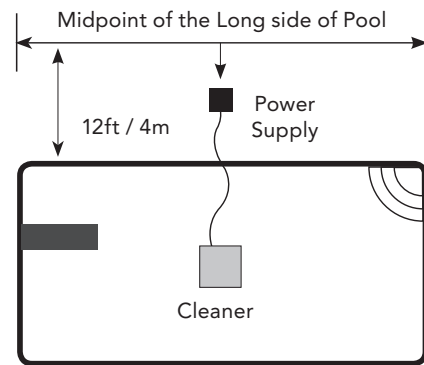
**WARNING:** Do not turn the Power Supply on, unless the pool cleaner is in the water.

**WARNING:** Do not operate your machine while people swim in the pool.

**WARNING:** The Power Supply must be placed at least 12 feet / 4 meters from the pool's edge at all times! See diagram below.

**WARNING:** To prevent possible electric shock hazard this unit must be connected to an RCD (Residual Current Device) with a related residual operating current not exceeding 30mA.

**WARNING:** Before performing any troubleshooting maintenance procedures, your Cleaner should be disconnected from the Power Supply (transformer) and the Power Supply should be unplugged from the electrical outlet to prevent the possibility of personal injury or damage to your Cleaner!



## DO NOT RETURN CLEANER TO RETAILER!

CALL CUSTOMER SERVICE AT  
800-221-1750

This guide provides basic troubleshooting. A more detailed troubleshooting guide is included separate from this guide. You may also download the Quick Start Guide as well as the Settings and Troubleshooting Manual at: [www.Aquabot.com](http://www.Aquabot.com)

### Figure C:

If your cable gets tangled, use the EZ Swivel to straighten out the cable. **Using one hand**, grab the larger grip and pull towards the power supply. Cable will automatically untangle. For more detailed instructions, see the Detailed Instructions and Troubleshooting Guide that is included in the box.

**Please disconnect floating cable from power supply FIRST!**

