



IntelliTouch ScreenLogic User's Guide

© 2005 Pentair Water Pool and Spa, Incorporated.

1620 Hawkins Ave., Sanford, NC 27330 • (919) 566-8000
10951 West Los Angeles Ave., Moorpark, CA 93021 • (805) 523-2400

All rights reserved. Information in this document is subject to change without notice.

Trademarks and Disclaimers. The trademarks IntelliTouch, Swimming Colors and Pentair Pool Products are trademarks of Pentair Water Pool and Spa. MobileTouch, *SAm*, *SAL*, and *FIBERworks* are registered trademarks of Pentair Water Pool and Spa. Other trademarks and trade names may be used in this document to refer to either the entities claiming the marks and names or their products. Pentair Water Pool and Spa disclaims proprietary interest in marks and names of others.

March 2005

Contents

Introduction	1
Introduction	1
IntelliTouch System Overview	1
IntelliTouch System Components	2
Load or Power Center	2
IntelliTouch Personality Kits	2
IntelliTouch Interfaces	3
IntelliTouch ScreenLogic in your home	4
IntelliTouch ScreenLogic Interface Kits	5
IntelliTouch ScreenLogic Interface Accessory Kits	5
 PDA and Tablet Overview	 7
Personal Digital Assistant (PDA) Description	8
PDA Front and Side Views	8
PDA Rear View	9
In-Wall Touch Screen	10
Tablet Overview	11
Tablet Controls and Lights	11
Using your ScreenLogic Interface	13
Important Precautions (Tablet, PDA, and In-wall Touch Screen)	13
Cold Boot/Power On-Off/Reset (Tablet and In-wall Touch Screen)	13
Cold Boot/Power On-Off/Reset (PDA)	13
Save System Settings (Tablet and In-Wall Touch Screen)	13
Low Battery Condition (Tablet and PDA)	14
Power ON and OFF (Tablet and PDA)	14
Battery and Power Management (Tablet)	14
Battery and Power Management (PDA)	14
 Installation	 15
Before You Begin	16
Tools Required.....	16
Connection Steps Summary	16
ScreenLogic Location Requirements	17
Less walls and ceilings equals better wireless reception	17
Cable Distance Limits	18
Recommended Wireless Router and Protocol adapter Location	18
Wireless router and Protocol adapter with existing Indoor Control Panel	19
Adding a Wireless Extender Wall-Plug for Large Homes/Properties	20
Connecting without Broadband Internet Access	21
Connecting to your Home Network with Broadband Access	22
Connecting to an existing home network	22
Installing the Wireless Extender Wall-Plugs for Large Homes/Properties	22
Connect to the Protocol Adapter	24
Connecting to the Personality Board	25
Start up the IntelliTouch ScreenLogic System for the first time	27
To start up the system	27

Contents (Continued)

Configuring ScreenLogic	29
Accessing IntelliTouch ScreenLogic Configuration Program	30
Installing IntelliTouch ScreenLogic Software on a PC or Laptop (ITC15 Kit only)	30
Start the Configurator Utility on the Tablet or In-Wall Touch Screen	30
Start ScreenLogic Program	31
Start the Configurator Utility on the PDA	31
Exit ScreenLogic Program	31
Transfer Time from the Configurator Utility	31
Compatibility with IntelliTouch Systems	31
ScreenLogic Configuration and Maintenance Screen	32
General Settings (Step 1 of 4)	33
Changing the Display to Show Fahrenheit to Celsius	34
Calibrating Temperature Sensors	34
Setup Circuits (Step 2 of 4)	35
Special Lights Button	36
Feature Circuit Configuration Button	36
Feature Macro Circuits Overview	37
Freeze Protection	37
Assign a Circuit Name and Function	38
IntelliTouch Circuit Functions	39
IntelliTouch Circuit Names	40
Creating a Feature Circuit Macro	41
Creating Custom Names for Auxiliary Circuits	42
Display a Circuit Function Button on the Main Screen	42
IntelliTouch Indoor Control Panel Circuit Names	42
Configure Other Equipment (Step 3 of 4)	43
Configuring Valve Actuators (Controlled by AUX or Feature Circuit)	44
Configuring Valve Actuators	45
Setting up Additional Equipment	46
Setting up a Two-Speed Pump	46
Setup Solar Equipment	47
Set a Cool-Down Cycle for the Heater	47
Enable Manual Spa Heat Control	48
Chlorine Generator	48
Activate the Chlorinator Control Interface	48
Configure iS10 Spa-Side Remote (Step 4 of 4)	49
Configure iS4, iS10, and QT4 QuickTouch	52

Contents (Continued)

Using ScreenLogic	53
Home Screen	54
Main Screen	55
Configuring Pool and Spa Heating System Options	57
Change the Pool and Spa Temperature	58
Changing Pool Heat Settings	58
Changing Spa Heat Settings	58
Lights Screen	59
Dim Lights	60
Special Lighting Features	61
Lights Screen: Configure Set Colors Tab (Color Set)	62
Color Set Lighting Feature	64
Set up Swimming Colors (Color Swim)	64
Color Sync	65
Switching Lights On/Off	65
Schedule Screen	66
Schedule Feature	67
Schedule: Run Once Screen	68
Run-Once Timer	69
Schedule: Egg Timer Screen	70
Setting the Egg Timer (Count Down)	71
History Screen	72
Equipment Screen	73
System Status Messages	74
System Delay Cancel Feature	74
Enable/Disable Spa-Side Remotes	74
Chlorinator Status and Controls Description	75
 Frequently Asked Questions (FAQs) and Troubleshooting	 77
ScreenLogic Tips and FAQs	78
ScreenLogic Technical Support Questions	78
Why does the Configuration program say “Looking for Controller?”	78
My ScreenLogic device stopped responding to inputs or is acting strangely.	78
How do I exit the ScreenLogic program while using the Tablet or In-wall Touch Screen?	79
ScreenLogic Error Messages	79
My Tablet or PDA wireless settings have been deleted accidentally, what do I do?	79
How many ScreenLogic Protocol adapters can I install in an IntelliTouch system	79
My Tablet and/or PDA lost the wireless connection to the Range Extender. How do I reconnect?	80
PDA Tips and FAQs	81
PDA On/Off Button (Turn off Backlight)	81
How can I calibrate the PDA screen?	81
Starting Up the Tablet	81
What is the first thing I should do with the Digital Tablet or PDA?	81
Why doesn't the Digital Tablet or PDA come charged so that I can turn it on right away?	81

Contents (Continued)

Do I need to load any software to get started?	82
Is there anything I should NOT do with the device while I am learning to use it? ..	82
Is there anything I need to assemble before I turn it on?	82
How do I begin to use the Digital Tablet and in-Wall Touch Screen immediately? ..	82
“Connecting Please Wait” message	83
How do I make the panel brighter/darker?	83
How do I switch the Tablet off?	83
My Digital Tablet will not switch on	83
My Digital Tablet will not switch off	83
I changed my mind immediately after recovering from Suspend mode and wish to put the device into Suspend again. Why is it that the Suspend button appears nonresponsive?	83
The Tablet comes with a protective rubber grip handles and a shoulder strap – what do they offer and how do I use them?	84
The Tablet comes with a desktop cradle – what are its functions?	84
Cleaning the Touch Screen	84
Appendix	85
 The wireless router that came with my ScreenLogic kit does not reliably reach the area where I primarily use my Tablet and/or PDA	 86
Range Extender Kit Description	86
In-Wall Touch Screen Installation	86
HomeLogic Management and Control Solution	89
Glossary	91

IMPORTANT SAFETY PRECAUTIONS



Important Notice:

Attention Installer: This manual contains important information about the installation, operation and safe use of this product. This manual should be given to the owner and/or operator of this equipment.

⚠ WARNING - Before installing this product, read and follow all warning notices and instructions which are included. Failure to follow safety warnings and instructions can result in severe injury, death, or property damage. Call (800) 831-7133 for additional free copies of these instructions.

⚠ CAUTION - **Danger of explosion if battery is incorrectly replaced.** Replace only with the same type recommended by the manufacturer. Dispose of used batteries according to the manufacturer's instructions.

Rechargeable Lithium-ion battery disposal

Unwanted lithium ion battery packs may be returned to your local recycling center or the battery manufacturer for disposal.

Digital and in-wall Tablet and PDA Enclosure

Dismantling or opening the device enclosure or case will void warranty and may possibly cause electric shock.


CE (EU) Declaration of Conformity

This product conforms to the essential protection requirements of the European Council Directive 89/336/EEC that relates to electromagnetic compatibility, EN55022:1998, Class B; and EN61000- 3-2, 3-3, 4-2, 4-3, 4-4, 4-5, 4-6, 4-8, and 4-11.

Modifications

The FCC requires the user to be notified that any changes or modifications made to this device that are not expressly approved by DT Research can invalidate FCC approval.

IMPORTANT SAFETY PRECAUTIONS (CONTINUED)

 **FCC Regulatory Safety Notice** - The wireless products devices have been tested and found to comply with the limits for a Class B digital device, pursuant to Part 15 of the FCC Rules. These limits are designed to provide reasonable protection against harmful interference in a residential installation. These devices generates, uses and can radiate radio frequency energy and, if not installed and used in accordance with the instructions, may cause harmful interference to radio communications. However, there is no guarantee that interference will not occur in a particular installation. If this equipment does cause harmful interference to radio or television reception, which can be determined by turning the equipment off and on, the user is encouraged to try to correct the interference by one or more of the following measures:

- Reorient or relocate the receiving antenna.
- Increase the separation between the equipment and receiver.
- Connect the equipment into an outlet on a circuit different from that to which the receiver is connected.
- Consult the dealer or an experienced radio/TV technician for help.
- Modifications not expressly approved by the party responsible for FCC compliance could void the user's authority to operate the equipment.

CAUTION: FAILURE TO COMPLY MAY RESULT IN SERIOUS INJURY

Please review the following material carefully. Failure to follow the instructions, or failure to heed the warnings contained in this manual could lead to serious injury.

Special Battery Cautions:

The following are special precautions you should take when using and handling batteries.

- Do not expose batteries to direct sunlight or extreme heat.
- Do not submerge batteries in liquid.
- Do not incinerate batteries.
- Do not handle damaged or leaking battery packs.
- Do not attempt to discharge batteries by short-circuiting them.
- Do not attempt to charge batteries with a charger other than one approved for use with the Digital Tablet or PDA.
- Do not leave or operate the Digital Tablet or PDA, in an excessively hot environment such as a closed vehicle under hot sunshine or beside a fire, or heater. Do not leave PDA or Digital Tablet exposed to excessive heat for any period of time. Excessive heat exposure may result in melting, or cause the electronics/battery to overheat resulting in fire.
- Use only the supplied batteries and AC Adapter. Failure to follow this instruction may result in battery burst or liquid leak, and may cause fire, or injury.
- Store and Dispose of all batteries in accordance with the instructions contained herein. Never dispose of the battery by burning. Any such action may result in excessive heating, explosion, or fire.
- Do not disassemble, modify, puncture, or strike any battery with force or allow batteries to become wet. Any such action may result in excessive heat, explosion, or ignition.

IMPORTANT SAFETY PRECAUTIONS (CONTINUED)

CAUTION: Danger of explosion if battery is incorrectly replaced.

- Replace only with the same type recommended by the manufacturer.
- Dispose of used batteries according to the manufacturer's instructions.
- Rechargeable Lithium-ion battery disposal
- Unwanted lithium ion battery packs may be returned to the battery manufacturer for disposal.
- Enclosure: Dismantling or opening the device enclosure or case will void warranty and may possibly cause electric shock. Avoid exposure to water.

About this User's Guide

This manual describes the how to set up and use IntelliTouch ScreenLogic, including how to configure your IntelliTouch system using the Configurator utility, and how to use the ScreenLogic program to control basic everyday pool and spa operations to advanced setup functions that only need to be performed once. These features can be easily automated using ScreenLogic via your Digital Tablet, in-wall Touch Screen, PDA, or PC.

This manual includes the following sections:

- **Introduction (page 1):** IntelliTouch system description.
- **PDA, In-Wall Touch Screen, and Tablet Overview (page 7):** Basic description of control functions for the PDA, In-wall Touch Screen, and Tablet.
- **Installation (page 15):** How to install the Protocol adapter and wireless router. Also, location recommendations.
- **Configuring ScreenLogic (page 29):** Description of each Configurator utility dialog. Each dialog description is followed by more detailed information and examples of the features.
- **Using ScreenLogic (page 53):** Description of ScreenLogic user screens. Each screen description is followed by more detailed information about how to use ScreenLogic features.
- **FAQs and Troubleshooting (page 77):** Frequently asked questions about using your Table, PDA and ScreenLogic. Also includes troubleshooting information.
- **Appendix (page 85):** Tablet specifications and operating information. Also, includes information about HomeLogic management and control solutions.
- **Glossary (page 91):** Glossary of terms used in this manual.

Technical Support

Contact Technical Support at:

Sanford, North Carolina (8 A.M. to 5 P.M.)

Phone: (800) 831-7133

Fax: (919) 566-8920

Moorpark, California (8 A.M. to 5 P.M.)

Phone: (800) 831-7133 (Ext. 6502)

Fax: (805) 530-0194

Web site: **visit www.pentairpool.com**

Related IntelliTouch Manuals

IntelliTouch User's Guide	(P/N 520102)
IntelliTouch Personality Kit User's Guide	(P/N 520101)
IntelliTouch Load Center and Power Center User's Guide	(P/N 520100)
IntelliTouch Expansion Kit User's Guide	(P/N 520271)

Introduction

Welcome! Your Pentair IntelliTouch ScreenLogic Pool and Spa and control system will change the way you view pool and spa controls. This innovation in pool and spa automation offers complete freedom for you while having full automation control over your pool, spa, lights, heater, cleaners and much more. You can now schedule multiple start and stop times to control your lights, heater, spa jets, and filter pumps. The historical data feature monitors energy use for your pool, spa and lighting equipment and also records pool, spa, and air temperatures. This historical data provides a convenient way to help you conserve energy. Using the wireless Digital Tablet or Personal Digital Assistant (PDA) you can now control your pool, spa, and lights from anywhere inside or outside your home. An in-wall Touch Screen and an interface for your PC are also available. IntelliTouch ScreenLogic is a scalable system that can be upgraded to a completely integrated home automation solution including audio, security, climate, irrigation and more. For more information about using the ScreenLogic system with the home automation system by HomeLogic, refer to “HomeLogic Management and Control Solution,” page 89.

This manual describes how to install, configure, and operate the IntelliTouch ScreenLogic system. Before learning how the IntelliTouch ScreenLogic system works, familiarize yourself with the various wireless and wired controllers included with each IntelliTouch Personality kit.

IntelliTouch System Overview

IntelliTouch systems offer the flexibility to handle from 5 to 40 circuits that can be used to control any combination of pumps, lights, water features, etc. As an added benefit, user-configurable circuits can also be used to control these combinations of features and more. The Feature Macro circuits feature allows any number of circuits to be combined on a single button. This gives you the ability to set up “themes” with custom names all with a press of a button. (*Not available with IntelliTouch model i5 or i5S*).

IntelliTouch users can also dim any high voltage incandescent light such as Pentair Amerlites and SpaBrites up to eight levels using the IntelliTouch Dimmer Module (P/N 520406). The dimmer module supports multiple lights from 100 watts up to 1,000 watts and installs in a standard relay location. Any number of dimmers (up to 10 maximum) may be used with a maximum combined load of 4,000 W in a single Load Center.

In the home

The IntelliTouch system can utilize multiple wired and wireless controllers including the Digital Tablet, Personal Digital Assistant (PDA), the wired in-wall Touch Screen, Indoor Control Panel, and the wireless MobileTouch control panel, and even your existing home PC. A maximum of four ScreenLogic interfaces can be used. For example, four Tablets, or four PDA's, or four in-wall Touch Screen's, or four PC's in any combination.

Around the pool

Located near your spa, the iS10 or iS4 spa-side remote provide control buttons for various pool and spa functions. The iS10 spa-side remote also provides a temperature display.

At the equipment pad

Near the pump, filter, and other equipment will be located a metal box known as the Load Center or Power Center. This is where high voltage from the junction box at the home is distributed to the various pool equipment. The pool service person can periodically check pool operations from this unit. The Load Center is also where the various IntelliTouch controllers interface with the other equipment.

Mounted on or top the valves you may also find motorized valve actuators used to change the flow of water through the plumbing. There may also be temperature sensors and cabling to the heater. There should be no need for anyone other than your service person to periodically check this equipment.

IntelliTouch System Components

The main required components of an IntelliTouch system are the Load or Power Center, IntelliTouch Personality Kits, and the Interfaces:

Load or Power Center

- **Load Center:** Provides a larger footprint (17" W x 23" H) Includes built-in sub panel (125 AMPS) capable of holding up to eight 1 inch breakers. Also includes five 25 AMP three HP relays, 110/240 V transformer with secondary side circuit protection. Multiple knockouts for different sizes of conduit are supplied as well as a GFCI side knockout. The Load Center provides ample space for all high and low voltage wiring needs.
- **Power Center:** Offers a smaller footprint (17" W x 17" H) than the Load Center. The Power Center does not include a circuit breaker base. Users should choose this enclosure if they already have existing circuit breakers/sub-panel for their equipment.
- **Expansion Kits:** Models i5X and i10X, offer five or ten additional Auxiliary Circuits for systems i9+3, i9+3S and i10+3D. Each IntelliTouch Expansion Kit requires a Load Center (P/N 520136) or Power Center (P/N 520137). Up to three Expansion Kits and Load or Power Centers may be added to a system, for control of up to 38 Auxiliary Circuits (40 auxiliary circuits for i10+3D).

IntelliTouch Personality Kits

There are several types of IntelliTouch control systems available for different pool/spa configurations:

- **Shared Equipment: Pool and spa combinations with shared filtration system** – Pool owners can enjoy the convenience of motorized valves for water flow separation between pool and spa. The Personality Kit models are:
 - i5 (P/N 520505) - Four auxiliary circuits plus filter pump operation. Five relays are included in the Load Center.
 - i7+3 (P/N 520507) - Six auxiliary circuits plus filter pump operation and the +3 option (create a Feature circuit for valve actuators without using an existing output auxiliary circuit). Two relays are included in the kit and five in the Load Center.
 - i9+3 (P/N 520509) - Eight auxiliary circuits plus filter pump operation and the +3 option (create a Feature circuit for valve actuators without using an existing output auxiliary circuit). Four relays are included in the kit and five in the Load Center.
- **Dual Equipment: Pool and Spa with Dual Sets of Equipment** – The IntelliTouch i10+3D (P/N 520510) system provides advanced automation for a pool and spa using two separate sets of equipment. This IntelliTouch Personality Kit controls ten pump and/or lighting circuits and two heaters. The Personality Kit includes, eight auxiliary circuits plus filter pump operation and the +3 option (create a Feature Macro circuit for valve actuators without using an existing output auxiliary circuit). Five relays are included in the kit and five in the Load Center.
- **Single Equipment: Pool Only or Spa Only Applications** – The IntelliTouch i5S (P/N 520506) and i9+3S provide advanced automation for a single body of water. The i5S (P/N 520506) Personality Kits includes eight auxiliary circuits plus filter pump operation. Five relays in the Load Center. The i9+3S (P/N 520508) Personality Kits includes eight auxiliary circuits plus filter pump operation and the +3 option (create a Feature Macro circuit for valve actuators without using an existing output aux circuit). Four relays are included in the kit and five in the Load Center.

IntelliTouch Interfaces

Pool and Spa owners can choose one or more of the following interface options to control the IntelliTouch system throughout their home.

- **iTC15 Kit (P/N 520500)** – Includes Protocol Interface Adapter and wireless router that connects to existing Desktop or Laptop PC. This allows control of IntelliTouch pool and spa systems via PC (requires PC with an Ethernet connection, and Windows XP operating system).
- **iTC25 Kit (P/N 520501)** – Includes Wireless Personal Digital Assistant (PDA) with 3.5" color touch screen custom configured for IntelliTouch systems, wireless router, and a Protocol Interface Adapter.
- **iTC35 Kit (P/N 520502)** – Includes in-wall color touch screen with Ethernet (RJ45) connection and Protocol Interface Adapter and wireless router. The in-wall Touch screen is custom configured for IntelliTouch systems.
- **iTC45 Kit (P/N 520503)** – Includes wireless Tablet with color touch screen, Protocol Interface Adapter, and wireless router. The Tablet is custom configured for IntelliTouch systems.
- **Indoor Control Panel (P/N 520138)** – 3.75" monochrome backlit LCD control panel. Connects to Personality board in Load Center.
- **MobileTouch (P/N 520340)** – 3.75" monochrome backlit LCD wireless control panel with transceiver antenna. Allows any IntelliTouch wired system to also have a wireless remote with all the capabilities of the Indoor Control Panel. With an average range of 300 feet, pool owners have system control anywhere around the home or yard. Powered by a rechargeable lithium-ion battery. Includes an AC adapter for recharging.



PDA



In-Wall Touch Screen



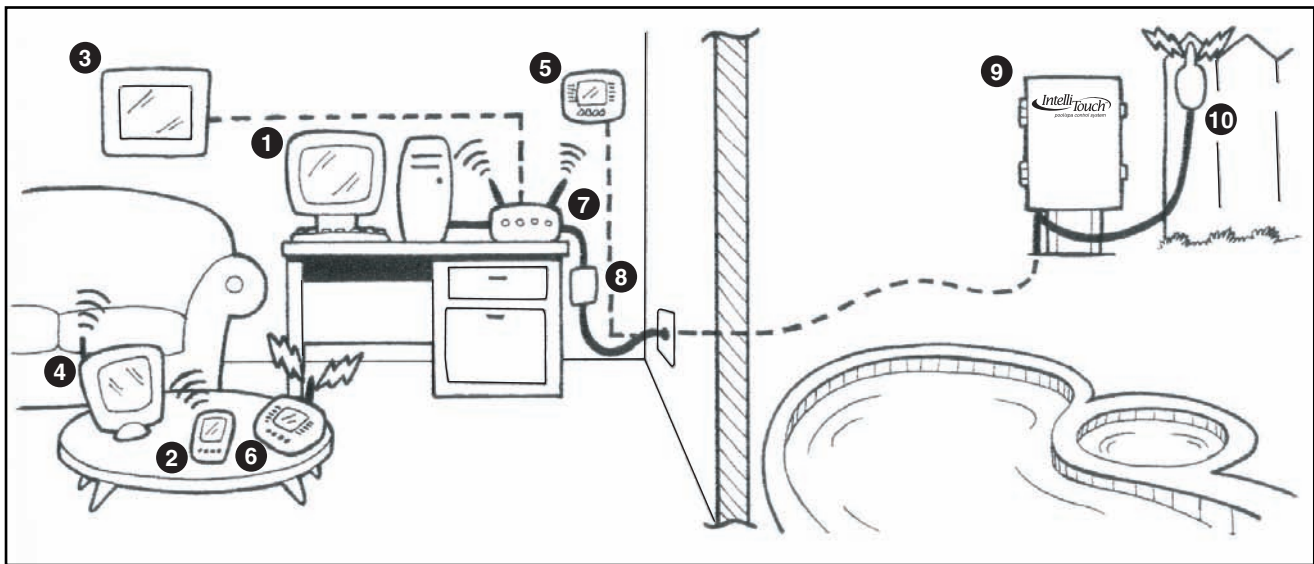
Digital Tablet



Indoor Control Panel



MobileTouch



IntelliTouch ScreenLogic in your home

- 1 **Personal Computer (PC):** Existing home owner's PC or Laptop. Connects to a wireless router and the IntelliTouch Protocol adapter for control of IntelliTouch pool/spa systems. Requires a PC/Laptop (Windows XP) with Ethernet/ RJ45 adapter installed.
- 2 **Personal Digital Assistant (PDA):** This wireless PDA with a color touch screen enables you to control your pool and spa features using the IntelliTouch ScreenLogic interface. The PDA is custom configured for IntelliTouch systems.
- 3 **In-wall Touch Screen:** A color display with Ethernet (RJ45) connector. Connects to the provided wireless router and Protocol adapter via Ethernet (RJ45) for control of IntelliTouch pool and spa systems. The in-wall Touch Screen is custom configured for IntelliTouch systems.
- 4 **Wireless Tablet:** This control panel consists of a color touch screen. Receives and transmits commands via wireless router and Protocol adapter for control of IntelliTouch pool/spa systems. The Tablet is custom configured for IntelliTouch systems.
- 5 **Indoor Control Panel:** This control panel consists of a 3.75" monochrome backlit LCD and connects to the Personality Board in the Load Center or Power Center for control of IntelliTouch pool and spa systems.
- 6 **MobileTouch:** This wireless control panel has a 3.75" monochrome backlit LCD. Receives and transmits commands via the Transceiver antenna located at the Load or Power Center.
- 7 **Wireless router:** Connects to the PC or Laptop via Ethernet connection to the Protocol adapter.
- 8 **Protocol adapter:** Connects to wireless router via Ethernet connection and to Personality board (Load/Power Center) via a four-wire 22-AWG cable.
- 9 **Load Center or Power Center.** The main control center. Includes the Outdoor Control Panel that controls pump, heater, and light relays. Receives commands via Protocol adapter, and wireless and wired control panels connected to the Personality board.
- 10 **MobileTouch Transceiver antenna:** This antenna is connected to the Personality board. Sends and receives commands to and from the MobileTouch control panel.

Note: For IntelliTouch ScreenLogic connection details, refer to page 21 and 22.

IntelliTouch Interface ScreenLogic Kits

The following items are included in your IntelliTouch Interface ScreenLogic Kit. As you unpack your IntelliTouch ScreenLogic Kit, please check to make sure that you received the items listed below. If any item is missing or damaged, contact your authorized dealer, or contact Technical Support (see page viii).

PC Interface (iT15 Kit - P/N 520500)

- Protocol adapter for connection to existing Desktop or Laptop PC.
- Wireless router (802.11b/g) with AC adapter.
- IntelliTouch ScreenLogic User's Guide (this manual).
- CD-ROM containing IntelliTouch ScreenLogic PC user interface software.

Personal Digital Assistant (PDA) (iT25 Kit - P/N 520501)

- Personal Digital Assistant (PDA) with built-in Wi-Fi 802.11b wireless LAN adapter with antenna. Refer to the manufacturers documentation for kit contents.
- Wireless router (802.11b/g) with AC adapter.
- Protocol adapter.
- IntelliTouch ScreenLogic User's Guide (this manual).
- CD-ROM containing IntelliTouch ScreenLogic PC user interface software.

In-Wall Touch Screen (iT35 Kit - P/N 520502)

- In-wall Digital Tablet, Cradle, and AC adapter.
- Wireless router (802.11b/g) with AC adapter.
- Protocol adapter.
- IntelliTouch ScreenLogic User's Guide (this manual).
- CD-ROM containing IntelliTouch ScreenLogic PC user interface software.

Digital Wireless Tablet (iT45 Kit - P/N 520503)

- Digital Tablet (with internal battery pack), stylus, built-in Wi-Fi 802.11b wireless LAN adapter with antenna.
- Wireless router (802.11b/g) with AC adapter.
- Protocol adapter.
- IntelliTouch ScreenLogic User's Guide (this manual).
- CD-ROM containing IntelliTouch ScreenLogic PC user interface software.

IntelliTouch ScreenLogic Interface Accessory Kits

Up to a total of four ScreenLogic interfaces can be used with an IntelliTouch system, as shown above. If you need additional interfaces, first order one of the ScreenLogic interface kits, then order one or more of the following accessory interfaces accessory kits:

- PDA, CD-ROM and manual (P/N 520497)
- In-Wall Touch Screen, CD-ROM and manual (P/N 520498)
- Tablet, CD-ROM and manual (P/N 520499)

Note: The above Accessory Kits interfaces do not include a Protocol adapter or wireless router.

Blank Page

ScreenLogic

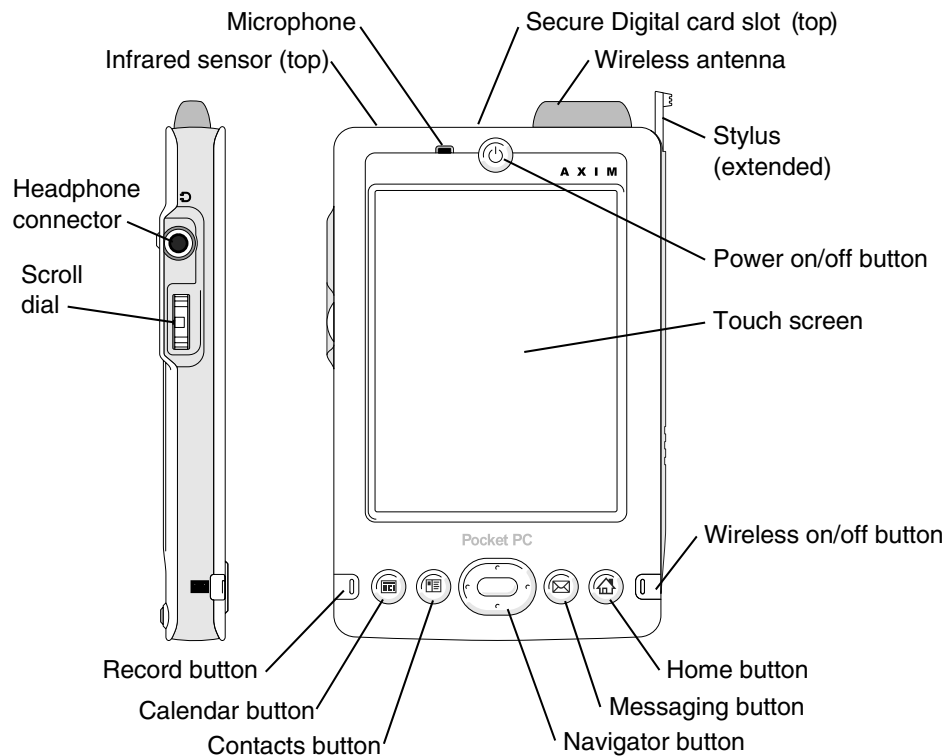
**PDA, in-Wall Touch Screen
and Tablet Overview**

Personal Digital Assistant (PDA) Description

The iTC25 (P/N 520501) Interface Kit includes a wireless touch screen PDA which is custom configured with the IntelliTouch ScreenLogic Pool and Spa control application. This device also offers a wide range of capabilities. For more detailed information about the PDA, refer to the manufacturers documentation shipped with the device.

PDA Front and Side Views

The following describes the PDA controls and functions:



Infrared Sensor: The infrared sensor lets you transfer files from your device to another infrared-compatible device without using cable connections. Not used by IntelliTouch ScreenLogic.

Microphone: Allows you to record audio. Not used by IntelliTouch ScreenLogic.

Secure Digital Card Slot: For using Secure Digital memory cards. Not used by IntelliTouch ScreenLogic.

Wireless Antenna: Allows you to transmit data.

- When Bluetooth® is in use, the antenna lights blue. Not used by IntelliTouch ScreenLogic.
- When Wi-Fi is in use, the antenna lights green.

Stylus: Use the stylus to write or draw on the screen. To remove the stylus, pull it straight up and out of the holder. To avoid losing the stylus, store the stylus in the holder when you are not using it. Ensure that the stylus is oriented correctly when you replace it in the slot.

PDA Front and Side Views (Continued)

Power Button: Press the power button to turn the device on or off. Press and hold the power button to dim the display. Repeat to light the display.

- When the device is connected to external power and the main battery is fully charged, the power button light is solid green.
- When the main battery charge is low, the power button light flashes amber.
- When the battery is being charged, the power button light is solid amber.
- When the device relays a notification, the power button light rapidly flashes green.

Touch Screen: Use the touch screen and the stylus to enter information into your device.

Wireless Enable/Disable: This button turns the wireless module on and off.

Home Button: Press this button to launch Home or to turn on the device.

Messaging Button: Press this button to launch Messaging or to turn on the device.

Navigator Button: Press the right, left, top, or bottom of the navigator button to move the cursor on the screen. Press the center to enter a selection.

Contacts Button: Press this button to launch Contacts or to turn on the device.

Calendar Button: Press this button to launch Calendar or to turn on the device.

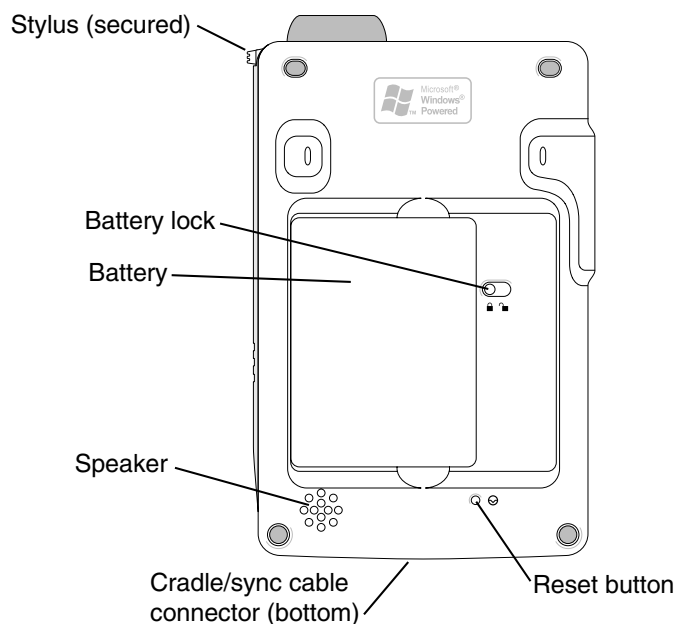
Record Button: Press this button to start recording.

Scroll Dial:

- Press the scroll dial to perform actions similar to pressing <Enter> on a keyboard.
- Rotate the scroll dial up or down to perform actions similar to using the up- and down-arrow keys on a keyboard. For information on the functionality of the scroll dial within programs, see Pocket PC Help on your device.

Headphone Connector: Attach headphones.

PDA Rear View



Battery Lock: Use this switch to release and remove the main battery.

Battery: Main battery.

Speaker: Tap the speaker icon to adjust the volume.

Cradle/Sync/Cable Connector: Connect a cradle or sync cable.

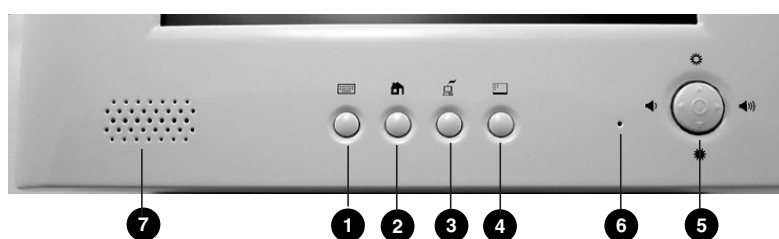
Reset Button: Reboots the PDA.

In-Wall Touch Screen

The iTC35 (P/N 520502) Interface Kit includes an in-wall color touch screen which is custom configured with the IntelliTouch ScreenLogic Pool and Spa control application. The operating software is Windows CE .NET bringing with it numerous applications, including support for Internet browsing, Windows Media Player, local e-mail client, and word processing. For in-wall touch screen installation instructions, see “In-Wall Touch Screen Installation,” page 86.

In-Wall Touch Screen Controls

The following describes the in-wall Touch Screen controls:



In-Wall Touch Screen (Controls)

- ❶ **Virtual Keyboard Toggle Button:** Open and close virtual keyboard. To input text into the Digital Tablet, press this button to display the virtual keyboard. Tap the desired letters to enter text. Press the button again to close the keyboard. Note: Tap the **Ctrl** key, then the **Q** key to exit the IntelliTouch ScreenLogic program. Double-tap the IntelliTouch ScreenLogic icon on the Windows Desktop to restart the program.
- ❷ **Cradle USB (ActiveSync) interface:** Enable. Push to Enable USB (ActiveSync) link between PC and Cradle with device secure on Cradle. Not used by IntelliTouch ScreenLogic program.
- ❸ **Launches Internet Explorer Browser:** Only works if you are connected to a Broadband Internet connection.
- ❹ **Minimize:** Desktop Minimize current application and return to Desktop. Does not work when IntelliTouch ScreenLogic is running.
- ❺ **Center Button - Suspend or Power/Reset:**
 - Quick push enters or exits Suspend Mode
 - Push and Hold to Power Off device (hold for about four seconds until display goes off); then Push to restart and complete (Cold) Boot process. (Only required if Tablet stops responding).

Navigation buttons:

Volume Down: Push on left edge of button.

Volume Up: Push on right edge of button.

Brightness Up: Push on upper edge of button.

Brightness Down: Push on lower edge of button.

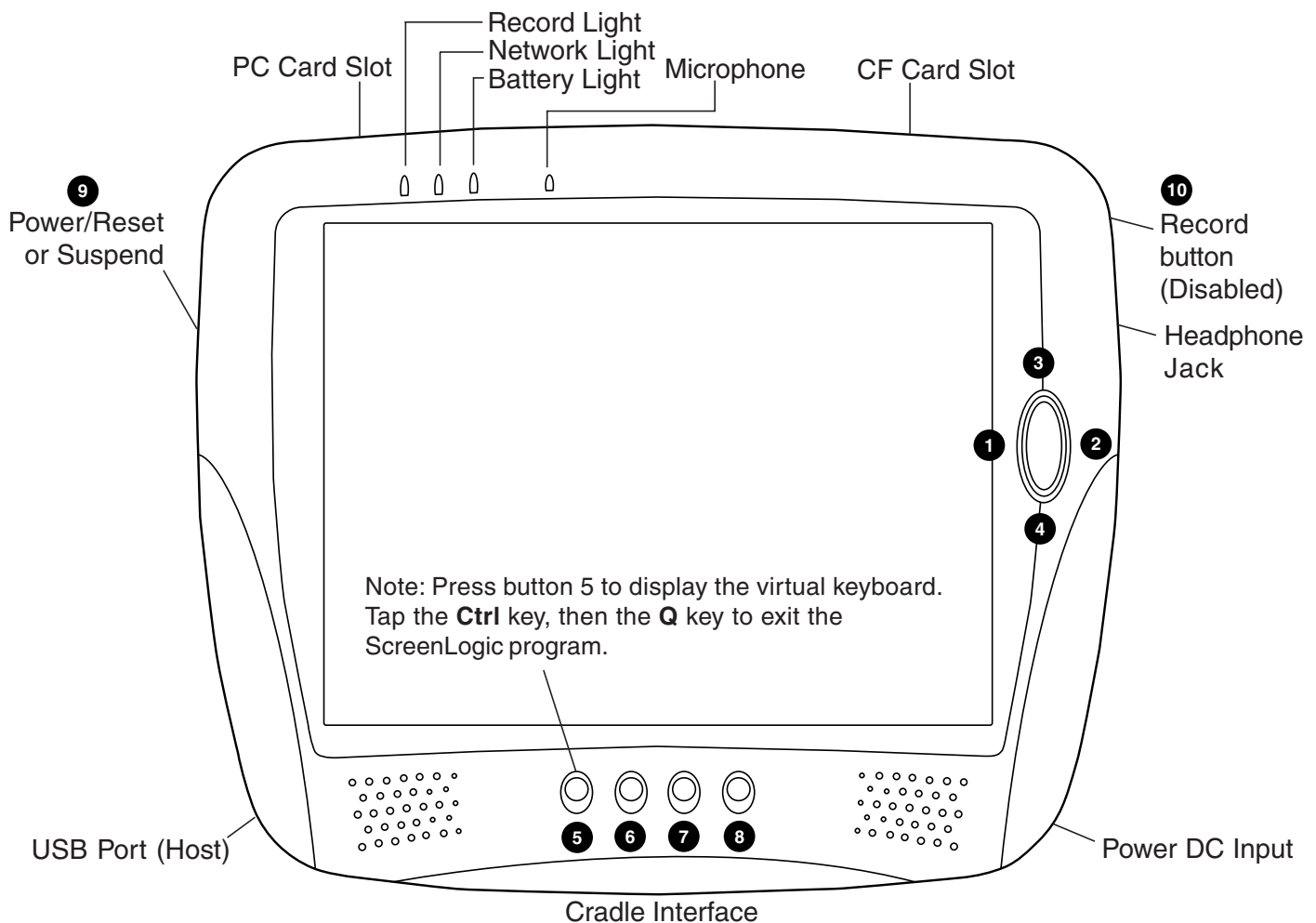
- ❻ **Microphone:** Microphone opening. Does not work when IntelliTouch ScreenLogic is running.
- ❼ **Mono Speaker:** Mono speaker opening. Does not work when IntelliTouch ScreenLogic is running.

Tablet Overview

The iTC45 (P/N 520503) Interface Kit includes a wireless touch screen Tablet which is custom configured with the IntelliTouch ScreenLogic Pool and Spa control application. Featuring a robust magnesium alloy enclosure, the sub 2 lb Tablet with 8.4" TFT display is powered by the Intel XScale processor providing "instant-on" capability with extended use between battery recharge. The operating software is Windows CE .NET bringing with it numerous applications, including support for Internet browsing, Windows Media Player, local e-mail client, and word processing.

Tablet Controls and Lights

The following describes the Tablet controls and lights:



- ❶ **Volume Down:** Push on left edge of oval button.
- ❷ **Volume Up:** Push on right edge of oval button.
- ❸ **Brightness Up:** Push on upper edge of oval button.
- ❹ **Brightness Down:** Push on lower edge of oval button.
- ❺ **Virtual Keyboard Toggle Button:** Open and close virtual keyboard. To input text into the Digital Tablet, press this button to display the virtual keyboard. Tap the desired letters to enter text. Press the button again to close the keyboard. Note: Tap the **Ctrl** key, then the **Q** key to exit the IntelliTouch ScreenLogic program. Double-tap the IntelliTouch ScreenLogic icon on the Windows Desktop to restart the program.

Tablet Functions (Continued)

- 6 **Cradle USB (ActiveSync) interface:** Push to Enable USB (ActiveSync) link between PC and Cradle with device secure on Cradle. Not used by IntelliTouch ScreenLogic program.
- 7 **Launches Internet Explorer Browser:** Only works if you are connected to a Broadband Internet connection.
- 8 **Minimize:** Desktop Minimize current application and return to Desktop. Does not work when IntelliTouch ScreenLogic is running.
- 9 **Suspend or Power/Reset:**
 - Quick Push enters or exits Suspend Mode
 - Push and Hold to Power Off device (hold for about four seconds until display goes off); then Push to restart and complete (Cold) Boot process. (Only required if Tablet stops responding)
- 10 **Record (Right-Edge) Button:** Not used by IntelliTouch ScreenLogic.

Tablet Lights

There are three lights (LEDs) on the Tablet:

- **Record LED:** The record LED (left LED) is accessible by applications. A green LED indicates that the Digital Tablet is recording from its internal microphone.
- **Network LED:** When the network LED (middle LED) is solid green it indicates that the network adapter is detected and functional.
- **Battery LED:** When the battery LED (right LED) is solid green, it means that the batteries are fully charged. When it is blinking amber, it indicates that the battery is charging. This will only happen when the Digital Tablet is plugged into the AC power. In the absence of AC power, the steady green state indicates a full or good battery level; when the battery charge is low, it will glow a steady amber; when the battery level is critically low, it will blink in amber rapidly.

Using your ScreenLogic Interface

Please read the following important information before operating your ScreenLogic interface.

Important Precautions (Tablet, PDA, and In-wall Touch Screen)

Before you use this device, please read this manual for setup procedures, safety precautions, and other important information. Please review the contents even if you are an experienced user. If you have any problems, contact Technical Support. For Technical Support contact information refer to page viii.

- The Digital Tablet and PDA must be used and stored inside.
- Keep the Digital Tablet, PDA, and in-Wall touch screen dry. Do not expose the device to moisture.
- Always exercise care when operating and handling the Digital Tablet, PDA, and in-wall touch screen.
- Do not apply excessive pressure to the display screen.
- Avoid exposing the panel screen to direct sunlight or other heat source. Where possible, the Tablet and PDA should be facing away from direct lighting to reduce glare.
- If the AC adapter is used to recharge or power the device, DO NOT use any AC adapter other than the one provided with the device or acquired from the manufacturer or its distributors.
- Never attempt to disassemble the Digital Tablet, PDA, or in-wall touch screen. You will lose any product warranty on the product.

Cold Boot/Power On-Off/Reset (Tablet and In-Wall Touch Screen)

You may use the Suspend Button to cold-boot or Restart the Digital Tablet in the unlikely event of device lockup. To execute, hold the button for over four seconds to “Power Off” the device. The device will be turned off. This Reset/Power Off will clear your software settings and data if they are not properly saved to flash memory (see “Save Tablet System Settings” below). Push again on Suspend Button for a brief moment to restart/reboot the device. To cold-boot or restart the in-wall touch screen, press and hold for four-seconds the round four-way directional button on the front of the in-wall touch screen.

Cold Boot/Power On-Off/Reset (PDA)

Insert the stylus into the reset hole on the back of the PDA to cold-boot or reset. (Only required if the PDA stops responding or has wireless connection problems.)

Save System Settings (Tablet and In-Wall Touch Screen)

Make sure to save your system registries settings in flash memory in the event of a Reset/Power Off. Your system settings such as date, time, screen brightness can be saved in flash memory.

To save your settings do the following:

1. **Tap Start > Settings > Control Panel > Registries Save/Restore.**
2. Tap the **Save Current Settings** check box.
3. Tap **OK** in Message dialog, to save your settings into persistent storage.
4. Tap **OK** again to confirm.
5. Tap **OK** to exit.

Low Battery Condition (Tablet and PDA)

A warning message will be generated during a low battery condition and the Tablet and PDA will shortly thereafter be placed into (Forced) Suspend mode if operation continues without external supply of power.

When a low battery condition occurs, the PDA will notify you that its battery is low, then it will automatically turn off the wireless radio to conserve battery life. Please recharge the PDA and re-enable its wireless radio by pressing the wireless On/Off button (see page 8).

After the Digital Tablet enters the (Forced) Suspend mode due to the Low Battery condition:

- If over two to four hours elapse without using the AC adapter or the external battery pack to resume system operation or recharge the battery, the battery power will drain entirely. If the Tablet is reactivated then, the device is reset and the process amounts to a cold boot. You can also reactivate the system by briefly pressing the Suspend button with a connected AC adapter or charged external battery.

Power ON and OFF (Tablet and PDA)

- The battery shipped with your device should be low in power – please be prepared to use the AC adapter with the Tablet and PDA in setting up the device for the first time and to fully charge the internal battery pack.
- Depending on the origin of your device, the Tablet and PDA is generally delivered in a “Power Off” state. To start (Cold Boot or “Power On”) the Tablet and PDA for the first time, push briefly on the Suspend or Power/Reset button located at the upper left edge of the device with the AC adapter connected to the device.

Battery and Power Management (Tablet)

The Tablet is equipped with an internal Li-Ion battery pack that is capable of supporting approximately 2.5 hours of continuous operation. The period between battery recharge can be significantly lengthened by putting the device into Suspend mode through the Suspend button whenever the device is not in use.

Note: The Tablet battery pack may be recharged with the provided AC adapter connected directly to the DC-in jack on the Tablet or connected to the Tablet cradle.

Battery and Power Management (PDA)

The PDA is equipped with an internal Li-Ion battery pack that is capable of supporting approximately 3.5 hours of continuous operation.

ScreenLogic

Installation

Before You Begin

Your IntelliTouch ScreenLogic PDA, wireless Tablet, and in-wall touch screen are pre-configured and ready for operation. The system hardware includes a Protocol adapter, a wireless router, and your choice of wired or wireless interface. The following describes the different set up options which depend on the type of Personality Kit being used:

- **iTC15 Kit (P/N 520500)** – Includes Protocol Interface Adapter and wireless router that connects to existing Desktop or Laptop PC. This allows control of IntelliTouch pool and spa systems via PC (requires PC with an Ethernet connection, and Windows XP operating system).
- **iTC25 Kit (P/N 520501)** – Includes Wireless Personal Digital Assistant (PDA) with 3.5" color touch screen custom configured for IntelliTouch systems, wireless router, and a Protocol Interface Adapter.
- **iTC35 Kit (P/N 520502)** – Includes in-wall color touch screen with Ethernet (RJ45) connection and Protocol Interface Adapter and wireless router. The Touch screen device is custom configured for IntelliTouch systems.
- **iTC45 Kit (P/N 520503)** – Includes wireless digital Tablet with color touch screen, Protocol Interface Adapter, and wireless router. The Tablet device is custom configured for IntelliTouch systems.

Tools Required

- Wire stripping tool (for stripping cable wires)
- Ethernet connector tool (for custom Ethernet cabling)

Connection Steps Summary

Before connecting the ScreenLogic interface, the IntelliTouch Load Center and Personality Kit should already be installed. The recommended ScreenLogic installation steps are:

- ➊ **Switch power off to the IntelliTouch Load Center:** Before connecting cables to the IntelliTouch Protocol adapter, switch off the power source to the Load Center.
- ➋ **Review the location requirements before installing the wireless router and Protocol adapter (pages 17 - 23).**
- ➌ **Connect the IntelliTouch Protocol Adapter (pages 24 - 25):** Connect a 22-gauge four-wire cable to the IntelliTouch Protocol adapter and to one of the available COM ports on the Personality board located in the Load Center. If both ports are in use, you can wire into the COM port connection block.
- ➍ **Connect to the Wireless Router (page 21 - 23):** Connect an Ethernet cable from the IntelliTouch Protocol adapter to the IntelliTouch wireless router ports 1-4.
- ➎ **Start up the IntelliTouch ScreenLogic System (page 27):** Verify cable connections. Power-up the Load Center and wireless router.

ScreenLogic Location Requirements

The IntelliTouch wireless router and the Protocol adapter must be located inside in a dry environment, preferably near the home owner's DSL/Cable modem.

To ensure optimum wireless connection, placement of the IntelliTouch wireless router inside the home is important. Ideally, the wireless router should be positioned in the room nearest to the pool and spa location or close to where the wireless tablet or PDA will be primarily used.

Less walls and ceilings equals better wireless reception

Your IntelliTouch ScreenLogic wireless router allows the PDA, Digital Tablet, or a wireless laptop to access the ScreenLogic interface from anywhere in and around your home up to approximately 150 feet from the wireless router. However, keep in mind that range is limited by the number of walls, ceilings, or other objects that the wireless signals must pass through. Typical ranges vary depending on the types of materials and background RF noise in your home. The following information can help maximize the wireless transmission and reception range:

1. Keep the number of walls and ceilings between the wireless router and the Tablet or PDA to a minimum - Each wall or ceiling can rob your wireless router of 3-90 ft. of range. Position your IntelliTouch wireless router so that the number of walls or ceilings are minimized.
2. Consider the direct line between your IntelliTouch wireless router and Tablet or PDA area of operation. A wall that is 1.5 feet thick, at a 45 degree angle, appears to be almost 3 feet thick to the wireless signal. At a two-degree angle it looks over 42 feet thick! Try to make sure that the wireless router is positioned so that the signal travels straight through a wall or ceiling for better reception.
3. Building materials make a difference - A solid metal door or aluminum studs may have a negative effect on range. Try to position the IntelliTouch wireless router so that the signal passes through drywall or open doorways and not other materials.
4. Keep your IntelliTouch wireless router away (at least 3-6 feet) from electrical devices that generate RF noise like microwaves, monitors, electric motors, UPS units, etc.
5. If you are using 2.4 GHz cordless phones or X-10 (wireless products such as ceiling fans, lights, and home security systems), your wireless connection might degrade dramatically or drop completely. Anything using the 2.4 GHz frequency could interfere with your wireless network.
6. For the average sized home, range should not be a problem. If you experience low or no signal strength in areas of your home that you wish to access, consider repositioning the IntelliTouch wireless router. Alternatively, you may consider adding the Range Extender Kit (P/N 520561) to transfer the wireless signal to the area of the home where the wireless Tablet or PDA will be primarily used. For Range Extender connection details, refer to page 19. For more information about the Range Extender, see page 86.
7. If you have an existing wireless router in your home, it may cause interference depending on how close in proximity it is to the ScreenLogic wireless router supplied in your ScreenLogic Kit. To minimize interference, try to maximize the distance between these two devices.

Location Requirements (continued)

Cable Distance Limits

Depending upon your location requirements, you may choose to have a long Ethernet cable run and a short four-wire cable run or vice-versa. The recommended cable limits are:

- Ethernet cable distance limit = 300 feet
- Four-wire cable distance limit = 1500 feet

Recommended Wireless Router and Protocol adapter Location

Note: A first floor installation location is recommended to maximize the wireless signal strength. However, if an upstairs installation is the only option, for the best reception it is recommended that the ScreenLogic wireless router be located on the floor directly above where the Tablet or PDA will be primarily used.

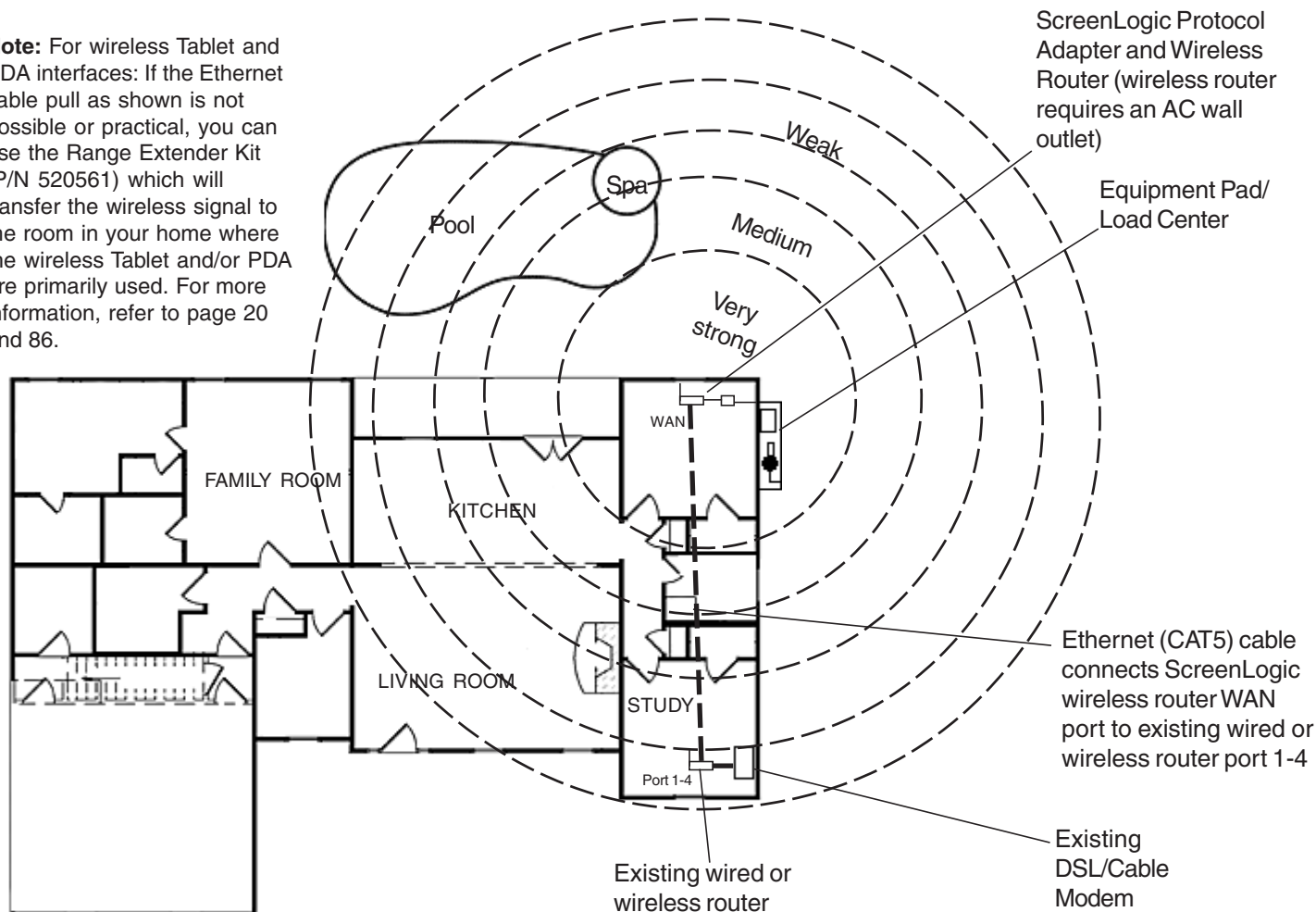
Advantages:

- Good wireless coverage to back of home and pool/spa area
- Minimal Protocol adapter cable wiring

Disadvantage:

- Requires Ethernet cable connection to existing wired or wireless router connected to DSL or Cable modem.
Note: Only required if you plan to access the Internet. Use of the ScreenLogic interface does not require an Internet connection.
- Requires Serial cable run from Protocol adapter to Load Center

Note: For wireless Tablet and PDA interfaces: If the Ethernet cable pull as shown is not possible or practical, you can use the Range Extender Kit (P/N 520561) which will transfer the wireless signal to the room in your home where the wireless Tablet and/or PDA are primarily used. For more information, refer to page 20 and 86.



Wireless router and Protocol adapter with existing Indoor Control Panel (option)

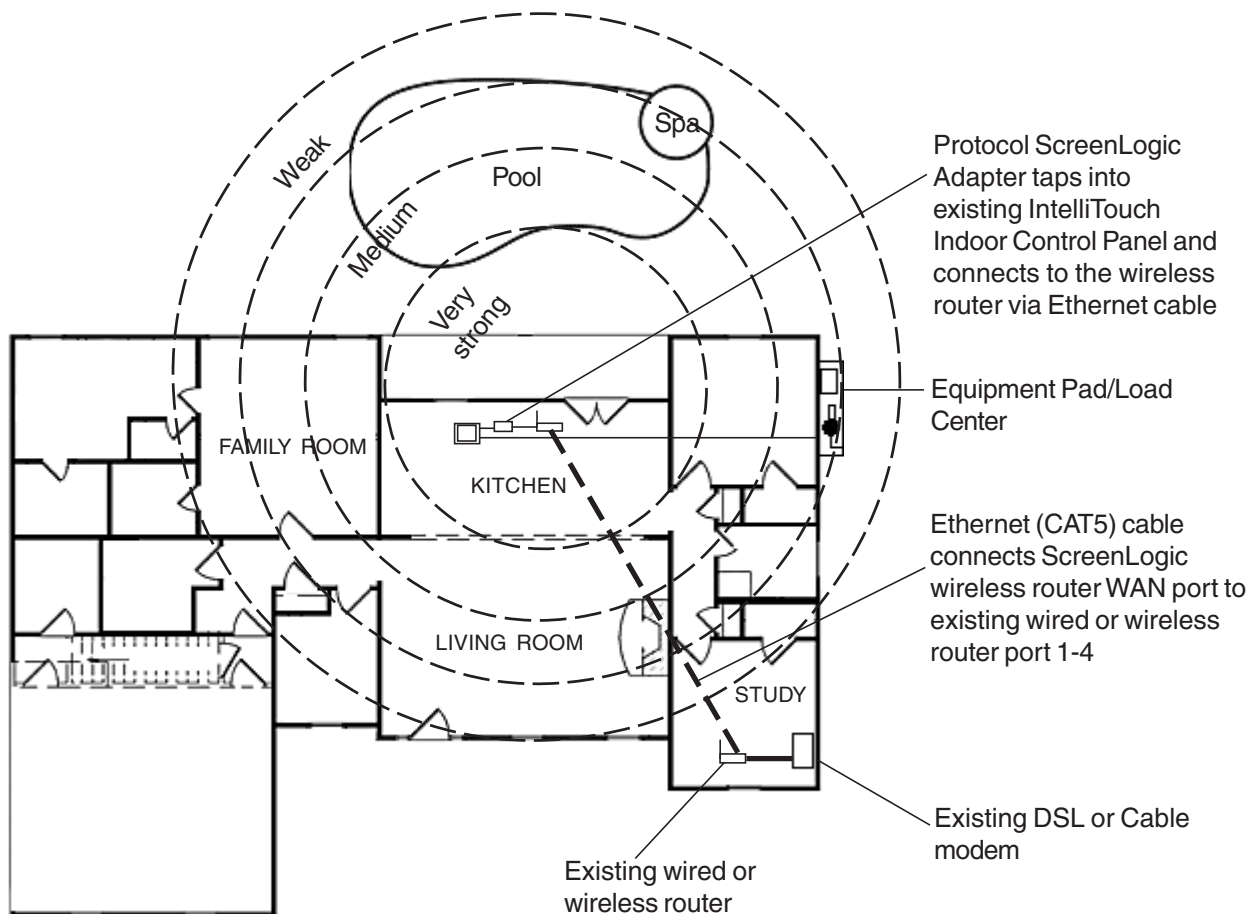
In some cases the homeowner will already have an existing IntelliTouch Indoor Control Panel. The four-wire conductor cable used to connect to the ScreenLogic Protocol adapter can tap in the Indoor Control Panel's four-wire connector or cable.

Advantage:

- Can tap into existing IntelliTouch Indoor Control Panel connector or cable
- Minimal Protocol adapter serial cable wiring
- Good wireless coverage to back of home and pool/spa area

Disadvantage:

- Requires Ethernet cable connection to existing wired or wireless router connected to DSL or Cable modem. This is only required if you plan to access the Internet. Use of the ScreenLogic interface does not require an Internet connection. See note at bottom of page.



Note: For wireless Tablet and PDA interfaces: If the above Ethernet cable pull is not possible or practical, you can use the Range Extender Kit (P/N 520561) which will transfer the wireless signal to the room in your home where the wireless Tablet and/or PDA are primarily used. For more information, refer to page 20 and 86.

Adding Range Extender Kit for Large Home and Properties

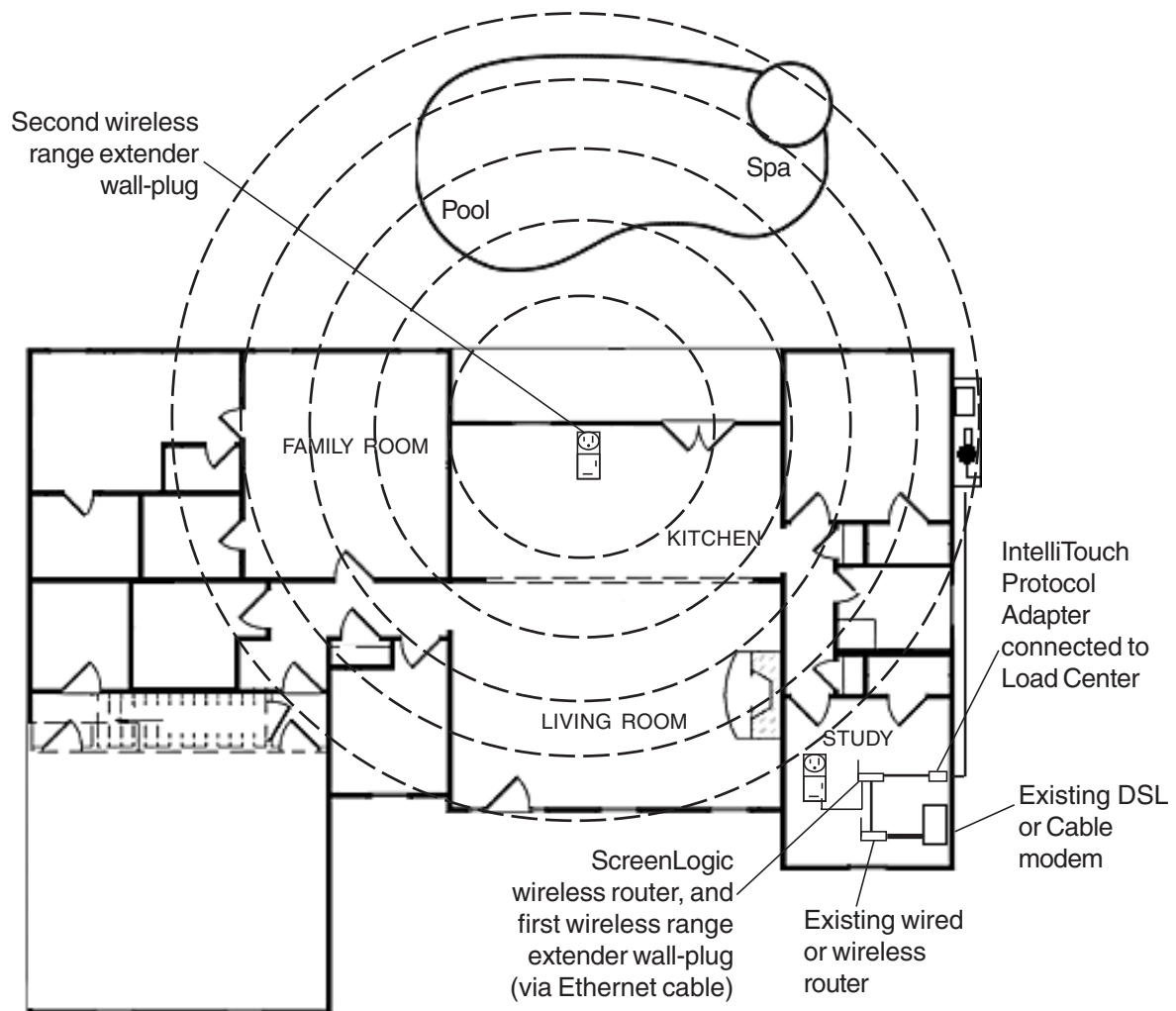
For larger homes and properties it may be necessary to install the wireless Range Extender kit (P/N 520561). The wireless Range Extender kit transfers the wireless signal for better coverage where you primarily use your Tablet and/or PDA. The wireless Range Extender kit consists of two wall-plugs that plug into your home's AC power wall outlets. The first wireless extender wall-plug connects to the ScreenLogic wireless router via an Ethernet cable (RJ45/CAT5). The second wall-plug does not require connection wires. This wireless extender wall-plug picks up and broadcasts the ScreenLogic wireless router signal for better coverage in the area of the home where the wireless Tablet and/or PDA are primarily used. For more information about the Range Extender, see page 86.

Advantages:

- Better wireless coverage for larger homes and properties
- Good wireless coverage to back of home and pool/spa area
- Use your home's electrical wiring instead of running an Ethernet cable

Disadvantage:

- Requires Serial cable run from Protocol adapter to Load Center



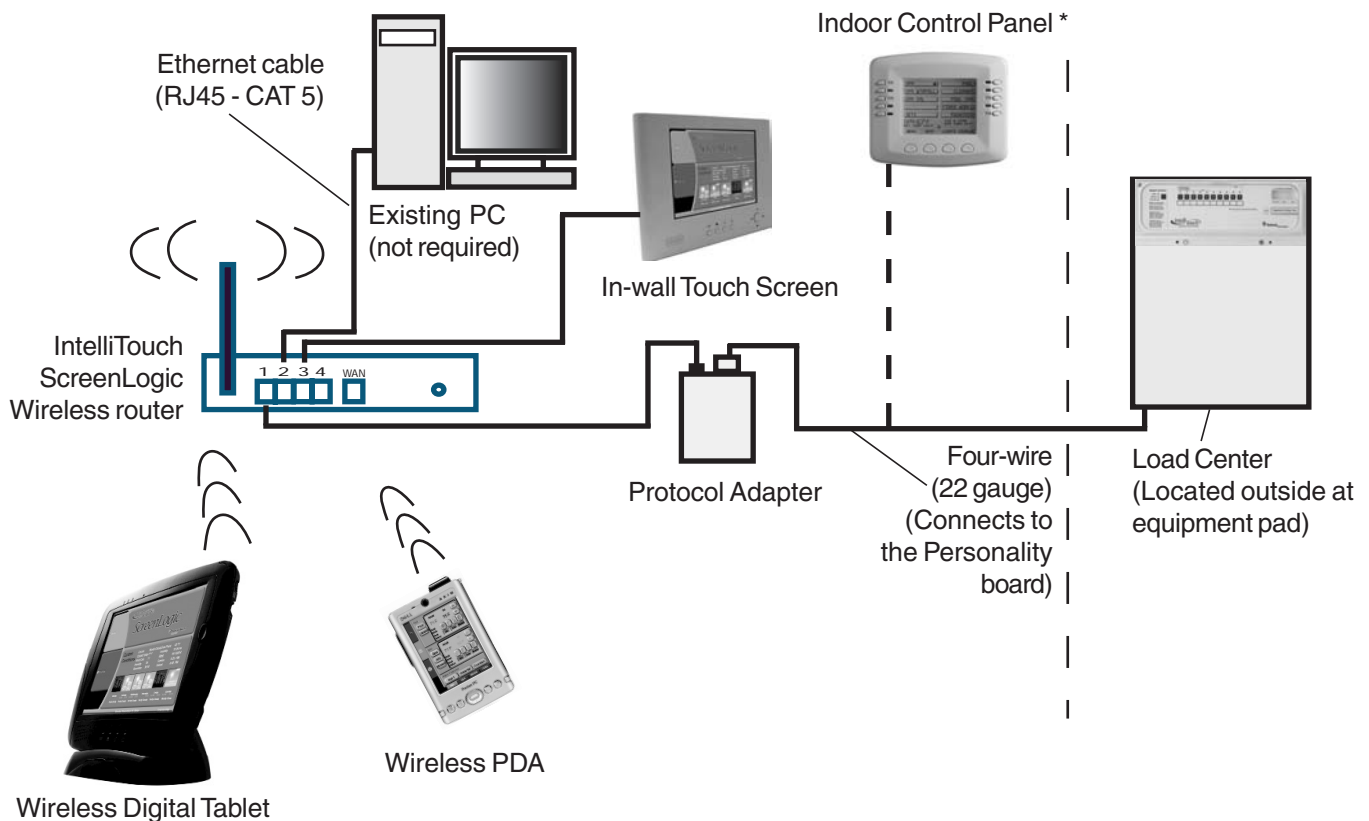
Connecting without Broadband Internet Access

This connection setup is for homeowner's that do not have a Broadband Internet connection.

Note: Use of the PDA, Tablet, or in-wall touch screen does not require the use of a PC.

To connect the IntelliTouch ScreenLogic hardware:

1. **Connect the Protocol adapter to the wireless router:** Connect an Ethernet cable (CAT 5) to the Ethernet RJ45 jack located on the Protocol adapter. Connect the other end of the Ethernet cable to LAN Port 1 on the back panel of the wireless router. The LED indicator for LAN Port 1 will be on to indicate proper connection. Ensure that a straight-through CAT 5 cable is used to connect to wireless router. A crossover Ethernet cable will not work.
2. **Connect to the PC:** Insert a separate Ethernet cable (CAT 5) to the LAN Port 2 on the back panel of the wireless router, and to an available Ethernet port on the network adapter in the computer. Use a straight-through CAT 5 cable to connect to the wireless router. The LAN Port 2 LED indicator will be lit to indicate proper connection.
3. **Connect to the Protocol adapter:** Proceed to "Connect to the Protocol Adapter," page 24.



Note: (*) Optional wiring for existing Indoor Control Panel. Tap into the Indoor Control Panel connector or pig tail off the four-wire cable connected to the Personality board.

Cable Distant Limits:

- Ethernet cable distance limit = 300 feet
- Four-wire cable distance limit = 1500 feet

Connecting to your Home Network with Broadband Access

While not a requirement to run ScreenLogic, IntelliTouch ScreenLogic can coexist with and utilize your existing home network's Broadband connection. There must be either an Ethernet-based Cable or DSL modem with an established Broadband Internet account from an Internet Service Provider (ISP).

By connecting IntelliTouch ScreenLogic to your existing home network you will be able to take advantage of weather forecast information and current weather conditions in your area. In addition, you can utilize the other Internet enabled applications that exist on the PDA, Tablet, and in-wall Touch Screen such as Web browsing, e-mail and much more.

Connecting to an existing home network

To connect to an existing home network:

1. **Connect the Protocol adapter to the wireless router:** Connect an Ethernet cable (CAT 5) to the Ethernet RJ45 jack located on the adapter. Connect the other end of the Ethernet cable to PORT 1 of the four Ethernet LAN ports located on the back of the wireless router. Use a straight-through CAT 5 cable to connect to wireless router. A crossover cable will not work.
2. **Connect to the existing home network router:** Connect an Ethernet cable (CAT 5) to the WAN Port on the back of the ScreenLogic wireless router. Connect the other end of the Ethernet cable to a LAN Port on the existing home network router. The existing home network router can be wired or wireless. Use a straight-through CAT 5 cable to connect to wireless router. A crossover cable will not work.

***Note:** The existing home wired or wireless router needs to be set to Dynamically Assign IP (DHCP enabled) addressing in order to assign a Subnet to the IntelliTouch wireless router to operate with the IntelliTouch ScreenLogic system.*

***Note:** For users with Broadband Internet connections, Pentair always recommends that the homeowner have an existing wired or wireless router connected to their DSL or Cable modem. The ScreenLogic wireless router should always be setup to piggy-back off this existing router and never should be setup to be the only router directly plugged into the DSL or Cable modem.*

3. **Connect in-wall touch screen to the IntelliTouch wireless router:** If you have an in-wall touch screen (iTC35 Kit P/N 520502), connect an Ethernet cable (CAT 5) from the bottom RJ45 jack of the in-wall to the LAN Port on the back of the IntelliTouch wireless router.
4. **Connect to the Protocol adapter:** Proceed to "Connect to the Protocol Adapter," page 24.

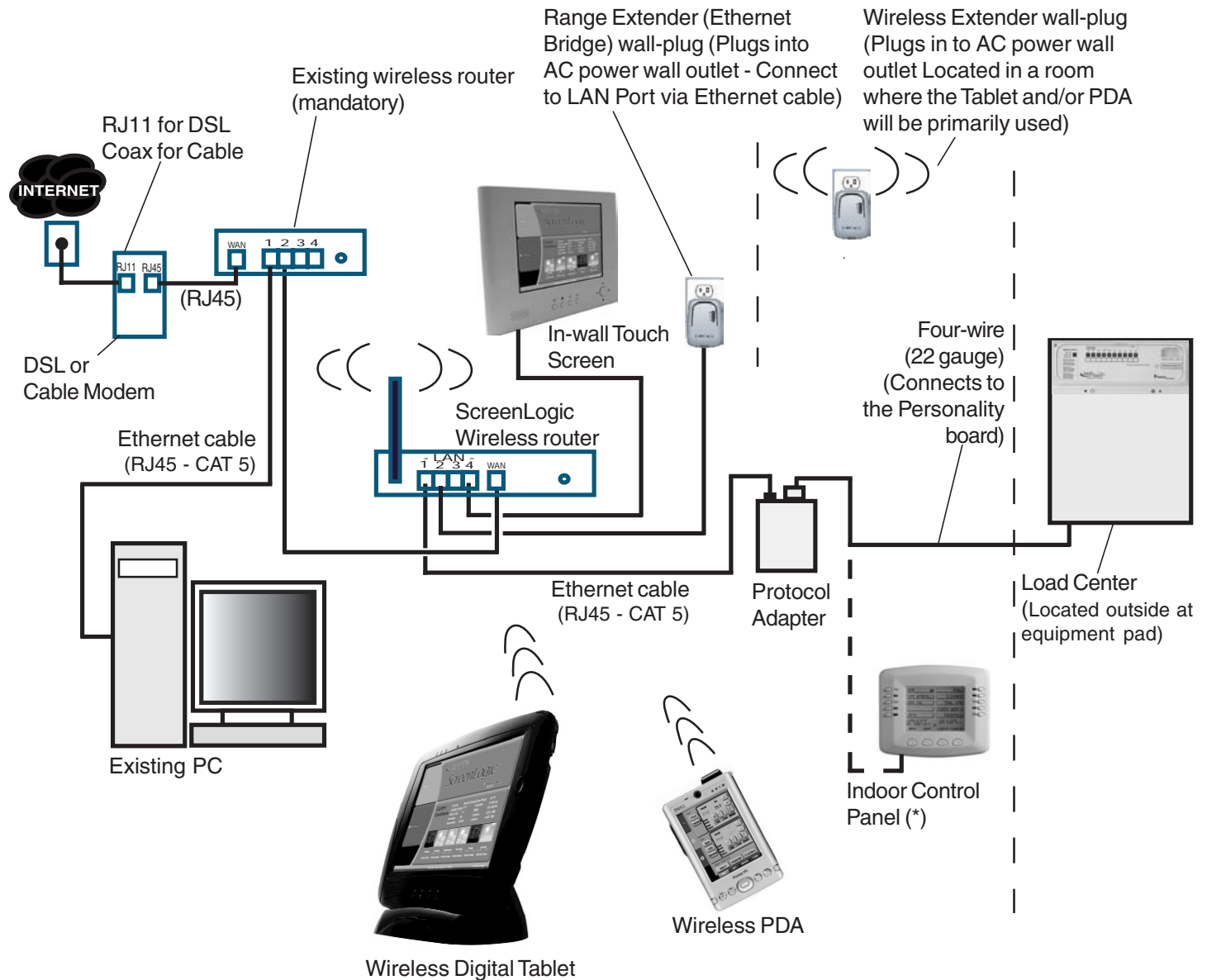
Installing the Range Extender Wall-Plugs for Large Homes/Properties

For larger homes and properties, you may need to use the wireless Range Extender kit (P/N 520561) to transfer the wireless signal to the room near where the wireless Tablet and/or PDA will be primarily used. The following diagram illustrates the wireless Range Extender connection.

To install the wireless Range Extender wall-plugs:

1. Connect the Ethernet cable (RJ45/CAT5) from the Ethernet Bridge Range Extender wall-plug to a LAN port on the ScreenLogic wireless router.
2. Plug the Ethernet Bridge Range Extender wall-plug into an AC power wall outlet near the wireless router.
3. Plug the other Range Extender wall-plug into an AC power wall outlet located in a room where the wireless Tablet and/or the PDA will primarily be used. When all three LEDs on the Range Extender are lit, the installation is complete.

Connecting to your Home Network with Broadband Access (Continued)



Note: (*) Optional wiring for existing Indoor Control Panel. Tap into the Indoor Control Panel connector or pig tail off the four-wire cable connected to the Personality board.

Cable Distant Limits:

- Ethernet cable distance limit = 300 feet
- Four-wire cable distance limit = 1500 feet

Connect to the Protocol Adapter

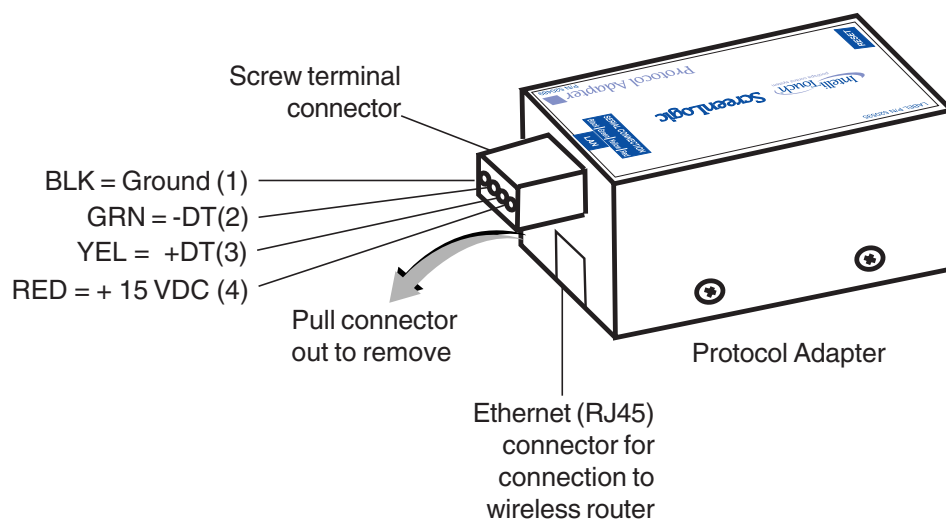
The IntelliTouch ScreenLogic Protocol adapter is connected to the Personality board located in the Load Center or Power Center via a four-wire cable. Before connecting the cable to the adapter, first determine the length of cable required for the connection.

Protocol Adapter Location: The IntelliTouch wireless router and Protocol adapter should be located inside in a dry environment, preferably near the home owners DSL/Cable modem. If the wireless router is too far from the pool area, then you may need to move the wireless router closer to the pool area by running an Ethernet cable from the DSL/Cable Modem connection out to the Protocol adapter and wireless router. For wireless router location requirement, refer to “ScreenLogic Location Requirements,” page 17.

Note: Existing Indoor Control Panel - If there is an existing IntelliTouch Indoor Control Panel, you can tap directly into the wire in the home or pig tail off the connector in the Indoor Control Panel. This avoids having to run a separate four wire from the Load Center to the Protocol adapter.

To connect to the Protocol adapter:

1. **Connect the Four-Wire Cable:** Run a four conductor cable (22 AWG UL approved) from the Load Center or Power Center location to the adapter. Place the adapter in a dry area near the wireless router. Ideally, both devices should be located near the home owners DSL or Cable modem.
2. Grasp the Protocol adapter with one hand, and with your other hand gently pull outward on screw terminal connector to remove it from its socket.
3. Strip back the four cable conductors $\frac{1}{4}$ inch. Insert the four wires into the connector screw terminals. Secure the wires with the four screws. Make sure to match the color coding of the wires with the pin colors indicated on the adapter label. The pin numbers and wire color codes are:
 - 1 BLK = Ground
 - 2 GRN = -DT
 - 3 YEL = +DT
 - 4 RED = +15 VDC
4. Insert the screw terminal connector onto the pins on the adapter circuit board. Note that the connector is keyed for the correct orientation.
5. Proceed to “**Connect to the Personality Board,**” page 25.

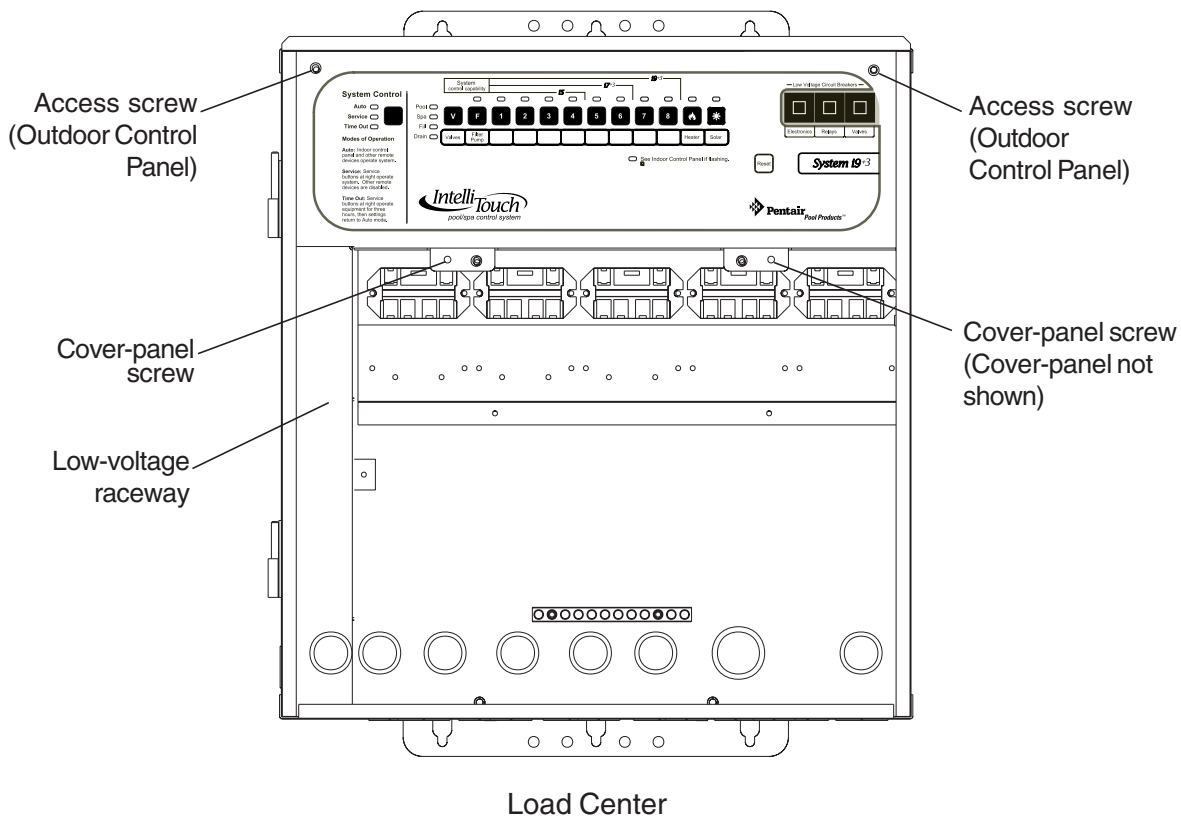


Connecting to the Personality Board

⚠ WARNING - Read the following WARNING information before removing the Power/Load Center enclosure high voltage cover-panel. It is required that the main power into the home be switched OFF at the main circuit breaker box whenever the high voltage cover-panel is removed. The main power must also be switched OFF to access the Power/Load Center enclosure low voltage raceway.

The following steps describe how to connect the four conductor cable to the Personality board.

1. Switch the main power OFF to the Load Center.
2. Unlatch the front door spring latches, and open the front door of the Load Center.
3. Remove the screws securing the high voltage cover-panel. Remove the cover-panel from the enclosure.
4. Loosen the two upper access screws from the Outdoor Control Panel.
5. Lower the Outdoor Control Panel down to access the Personality board.
6. Route the four conductor cable (22 AWG) cable in through a knockout at the bottom of the low voltage raceway, then route the cable up through the low voltage raceway to an available COM port on the Personality board.



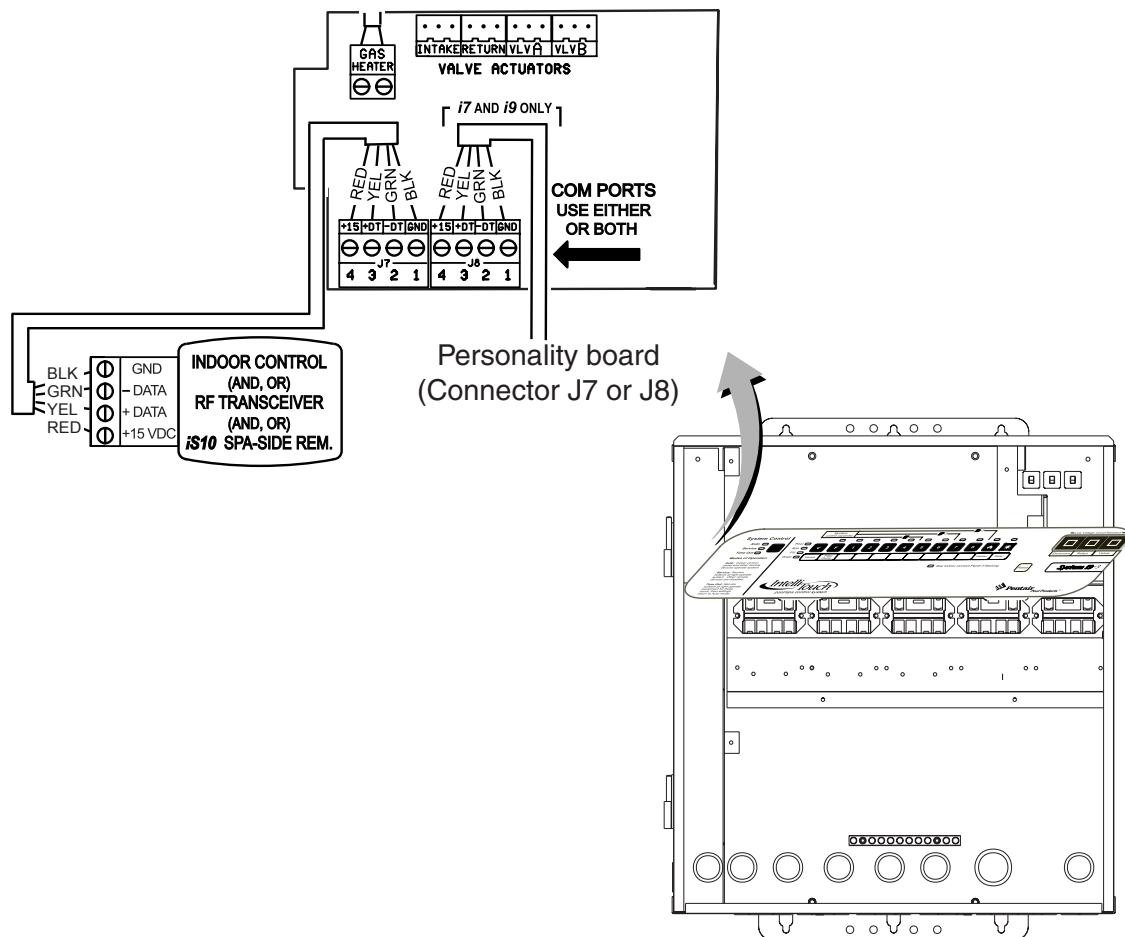
7. Strip back the cable conductors $\frac{1}{4}$ in. Insert the four wires into the screw terminals on either **COM PORTS (J7 or J8)** plug located on the left side of the Personality board. Secure the wires with the four screws. Make sure to match the color coding of the wires: The pin numbers and wire color codes are:

- | | |
|---|---------------|
| 1 | BLK = Ground |
| 2 | GRN = -DT |
| 3 | YEL = +DT |
| 4 | RED = +15 VDC |

Note: Multiple wires may be inserted into a single screw terminal.

CAUTION Do NOT short GND or +15 VDC connections (Red or Black) to data lines (Green or Yellow). The Personality board may be permanently damaged. Do NOT reverse GND or +15V or system will not operate.

8. Install the cover-panel and secure with the two retaining screws.
9. Close the hinged Outdoor Control Panel and secure with the two access screws.
10. Close the front door of the Load Center. Fasten the spring latches.



Start up the IntelliTouch ScreenLogic System for the first time

After the ScreenLogic Protocol adapter and wireless router are installed, power up the system and verify that all cables are properly connected.

To start up the system

1. **Power up the Load Center and Protocol adapter:** Switch the main power on to the Load Center. The Protocol adapter will also be switched on and its RED power LED should be lit. The Protocol adapter receives power from the Personality board COM port located in the Load Center.
2. **Connect power to the IntelliTouch wireless router:** Connect the AC power adapter to the receptor on the back panel of the wireless router and then plug the other end of the AC power adapter to a wall outlet or power strip. The Power LED will be on.
 - Check that the appropriate LEDs are lit on the front of the wireless router. The LED light for active LAN and WAN Port will illuminate to indicate proper connection. Note: The WAN port will only be lit if connected to the homeowner's wireless/wired router.
3. **Switch on the Tablet, PDA or PC/Laptop:** After the device is powered up you need to start the IntelliTouch ScreenLogic application to configure ScreenLogic for the type of IntelliTouch system being used.
4. **Configure ScreenLogic for installed IntelliTouch equipment:** Proceed to "Accessing IntelliTouch ScreenLogic Configuration Program," page 30.

Blank Page

ScreenLogic

Configuring ScreenLogic

Accessing IntelliTouch ScreenLogic Configuration Program

This section describes the Configurator utility dialogs used to configure ScreenLogic. Follow the Configurator utility dialogs, Steps 1 through 4 to configure ScreenLogic for the installed IntelliTouch equipment. The Configurator utility should display upon powering up your Tablet, or in-wall Touch Screen. If using a PC/Laptop, you must first run the setup program on the IntelliTouch ScreenLogic installation CD-ROM, then click on the ScreenLogic icon on the Desktop to launch the Configurator utility.

Note: Do not run the Configurator utility while using ScreenLogic. Before starting the Configurator Utility, you must first exit from the ScreenLogic interface.

Installing IntelliTouch ScreenLogic Software on a PC or Laptop (iTC15 Kit only)

To install the IntelliTouch ScreenLogic software on a PC or Laptop:

1. Insert the ScreenLogic CD into your CD-ROM drive, the Setup Wizard should automatically display. If it does not display, click **ScreenLogic.exe** on the CD-ROM to start the Setup Wizard.



2. Press **Next** and follow the on-screen instructions. The ScreenLogic icon will be installed on your desktop.

Start the Configurator Utility on the Tablet or In-Wall Touch Screen

To start the Configurator utility on the wireless Tablet or in-wall Touch Screen:

- Power up the device. If the Configurator utility is not running, double-tap the IntelliTouch ScreenLogic icon on the desktop. The Configurator utility main screen will display.
- To access the Configurator utility while running ScreenLogic: Press the virtual keyboard button (see page 11) to display the virtual keyboard. Tap the **Ctrl** key, then the **Q** key to close ScreenLogic, then double-tap the IntelliTouch ScreenLogic icon on the desktop.

Start ScreenLogic Program

To start ScreenLogic after using the Configurator utility:

1. After completing Steps 1 through 4 of the Configurator utility, click the **Finish** button. The Configurator utility main screen will display.
2. Click the **Start ScreenLogic** button.

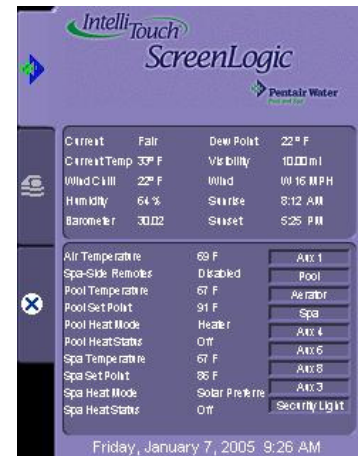
To start ScreenLogic from the Desktop:

1. Double-click the IntelliTouch ScreenLogic icon on your Desktop.
2. Click the **Start ScreenLogic** button.

Start the Configurator Utility on the PDA

To start the Configurator utility on the PDA:

- Power up the device. From the desktop, tap **Start > IntelliTouch ScreenLogic**. The Configurator utility main screen will display.
- To access the Configurator utility while running ScreenLogic: Tap the **X** tab to exit ScreenLogic (as shown on right), then from the desktop, tap **Start > IntelliTouch ScreenLogic**.



PDA Main Screen

Exit ScreenLogic Program

To exit ScreenLogic on the Tablet:

1. Press the **Virtual Keyboard** button (first left-side button on the front of the Tablet case).
2. Tap the **Ctrl** and **q** key to exit ScreenLogic.
3. Tap **OK** to close the keyboard.

Transfer Time from the Configurator Utility

Note: Changes and commands made in the Configurator utility may in some cases not be immediate. Depending on how many changes are made it could take up to 30 seconds to transfer the new settings to the IntelliTouch system. Using the Schedule feature could take longer.

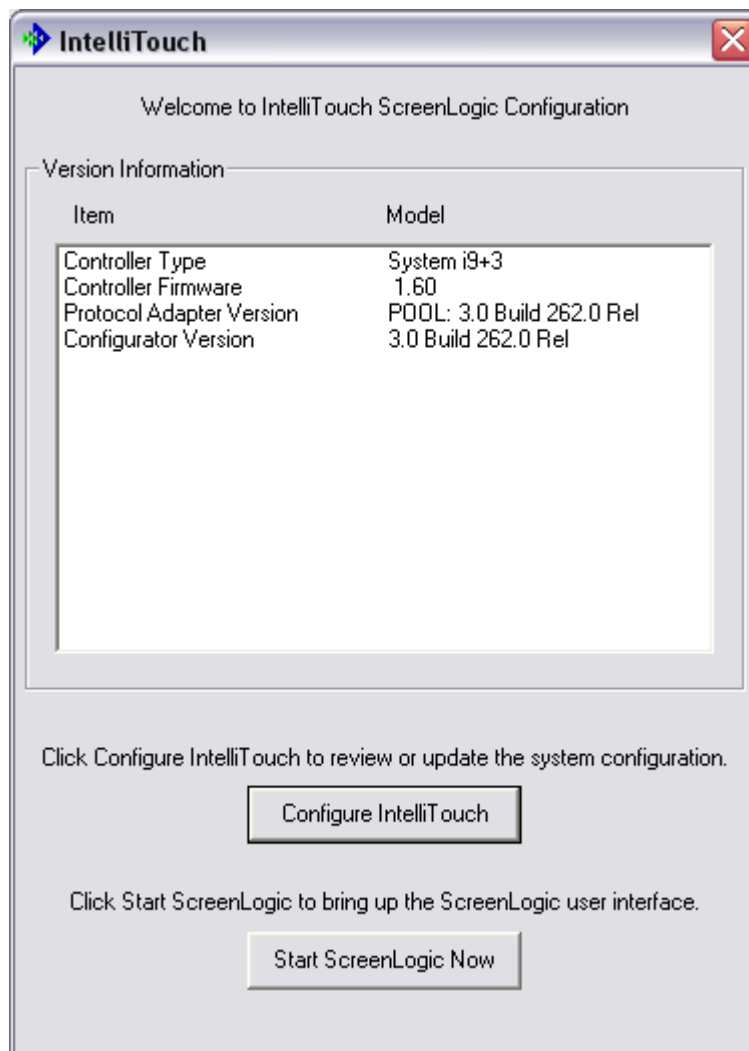
Compatibility with IntelliTouch Systems

ScreenLogic is compatible with all versions of IntelliTouch systems. In some cases, the ScreenLogic interface may be used with an IntelliTouch system that has an older version of firmware. Some of the ScreenLogic features will not operate unless the IntelliTouch firmware is up to date. Example features that may not work include support for 12 lights, Dimmer module support, and 3rd party chlorinator support. Contact your pool builder or Pentair to purchase the latest IntelliTouch Personality board if these features are necessary.

ScreenLogic Configuration and Maintenance Screen

The Configurator utility opening screen displays the type of IntelliTouch system equipment, firmware and software versions being used. From this screen you can start the Configurator utility to configure ScreenLogic for the IntelliTouch system, or start the ScreenLogic program.

- **To start the Configurator utility:** Tap the **Configure IntelliTouch** button, read the warning message and tap **Continue**. Proceed to configure ScreenLogic using the dialogs (Steps 1 through 4). After you are done, click the **Finish** button to return to the opening screen.
- **To start ScreenLogic:** Tap the **Start ScreenLogic** button. The Main screen is displayed.



General Settings (Step 1 of 4)

Use the following Time Zone table to determine your location.

U.S. Time Zone	Greenwich Mean Time (GMT)
Hawaiian Time	(GMT -10:00)
Alaskan Time	(GMT -09:00)
Pacific Time (US & Canada); Tijuana	(GMT -08:00)
Mountain Time	(GMT -07:00)
Central Time	(GMT -06:00)
Eastern Time	(GMT -05:00)

Name	Description
Clock	<p>The date & time set in the Configurator utility sets all system clocks for the PDA, In-Wall touch screen, Tablet, IntelliTouch Outdoor Control Panel, and Indoor Control Panel. If the PC time & date do not match the time & date displayed on the ScreenLogic Home screen, you need to reset the PC time & date to the time & date set in the Configurator utility. Note: Time & date synchronization for all systems may take a few minutes.</p> <p>Date: Set the current day, month and year. Hour: Set the current hour (AM/PM) and Minutes. Time Zone: Set the time zone for your location.</p>
Location	<p>ZIP code: ZIP code for your location. U.S. Zip code information will automatically populate the Latitude and Longitude coordinates and Time Zone. These settings display the weather forecast and conditions, sunset, and sunrise information for your area. This feature requires a Broadband Internet connection.</p>
Temperature Scale	<p>Fahrenheit/Celsius: Display Set Point and Actual temperatures in degrees Fahrenheit or Celsius.</p>
Calibrate Sensors	<p>Air - Down/Up: Lower/Raise current temperature. Pool - Down/Up: Lower/Raise current temperature. Spa - Down/Up: Lower/Raise current temperature.</p>
Manual OP Priority	<p>Manual Operation Priority: When enabled, this feature will turn off any scheduled program to allow manual pump override. The manual function default time is 12 hours, after which the scheduled program will resume.</p>
Home Page	<p>Pool Summary: Displays the current pool, spa and air temperatures, and set points, heat mode status, and enabled auxiliary circuits (yellow) that correspond to buttons (yellow) on the ScreenLogic Main screen. Weather Only: Displays your current weather conditions on the Home page. You must be connected to the Internet to display current weather conditions for your location. Weather + Pool Summary: Displays your current weather conditions and system information on the Home page.</p>
Back button	Go to previous page.
Next button	Go to the next page (Step 2 of 4)
Finish button	Save current settings and exit the Configurator utility.

Changing the Display to Show Fahrenheit to Celsius

Temperature set point and actual temperature settings are displayed on the Main screen in either Fahrenheit or Celsius.

To change the temperature scale:

1. Start the ScreenLogic Configurator utility, and tap **Configure IntelliTouch**.
2. On the General Setting page under **Temperature Scale**, tap either Fahrenheit or Celsius.
3. Tap **Finish** when done to save the setting.

Calibrating Temperature Sensors

The IntelliTouch system includes two temperature sensors (10 k Ω) for water and ambient air temperature. The IntelliTouch i10+3D model for dual bodies of water has three sensors. You can add an additional sensor for controlling solar heating systems.

Generally, these sensors are accurate and you do not have to calibrate them. However, long plumbing runs and water features can cause temperatures at a body of water to be different from the temperature sensor reading. You can manually recalibrate the sensors to adjust for this.

Before you start, you need an accurate all weather thermometer. If you are calibrating the air sensor, wait until the sensor is not in direct sunlight.

There is a Water Temp and Air Temp setting. If you have an i10+3D system, you will see **Spa Temp**, **Pool Temp**, and **Air Temp**. Calibrate the Spa and Pool temperatures the same way as described below for Water Temp. For the i5, i5S, i7+3, or i9+3 system, there is a water and air temperature sensor. Make sure to locate the air temperature sensor in the shade for accurate readings.

To calibrate the air, pool and spa sensors:

1. First, tap the **Pool** or **Spa** button on the ScreenLogic Main screen to switch on the spa or pool filter pump.
2. Tap **Configure IntelliTouch** to start the ScreenLogic Configurator.
3. Place the thermometer in the spa or pool. Take an accurate temperature reading. When calibrating the air sensor, place the thermometer next to the air sensor. The sensor is normally located near or under the Load Center or Power Center enclosure, not inside the enclosure. Take an accurate temperature reading in the shade.
4. On the General Setting page under **Calibrate Sensors**, use the **Up** or **Down** arrows to raise or lower the Air, Pool and Spa temperature to match the corresponding thermometer temperature reading. If you have an i10+3D repeat the above for the pool. The i10+3D has three sensors, one each for the spa and pool water and one for the air temperature.
5. Press **Finish** when done.

Setup Circuits (Step 2 of 4)

Load Center	Circuit	Circuit Name	Circuit Function	On w/Freeze
Main	Spa	Spa	Spa	Yes
Main	Aux 1	Aux 1	Generic	No
Main	Aux 2	Aux 2	Generic	No
Main	Aux 3	Aux 3	Generic	No
Main	Aux 4	Aux 4	Generic	No
Main	Pool	Pool	Pool	Yes
Main	Aux 5	Aux 5	Generic	No
Main	Aux 6	Aux 6	Generic	No
Main	Aux 7	Aux 7	Generic	No
Main	Aux 8	Aux 8	Generic	No

Circuit Settings

Circuit Name:

Circuit Function:

SAM / SAL Position:

☒ On with Freeze

ScreenLogic Display

Show with:

Buttons: Set Custom Names..., Special Lights..., << Back, Next >>, Finish

Name	Description
Setup Circuits	Displays the available circuits for the system. Load Center: Displays the installed Load Center or Expansion Center(s). Circuit: Displays the available AUX circuits and Feature circuits (1-10). Depending on the model of the IntelliTouch system, the number of AUX circuits may vary. AUX circuits are located on the Personality board. Circuit Name: Assigned circuit name. Circuit Function: Assigned circuit function. On w/Freeze: Circuit assigned with freeze protection.
Circuit Settings	Displays the available circuit name, functions, and Pentair lighting features for selected circuits displayed in the main list. Circuit Name: Name of circuit (see page 40 for complete list of IntelliTouch circuits names). Also includes 20 user defined names. Circuit Function: Name of circuit function (see page 39 for list). On with Freeze: Select this option to switch on any circuit, such as a Pool and Spa circuit if the air temperature drops below 36° F. For a Pool circuit, the filter pump will have freeze protection. For a Spa circuit, the filter pump will run and the pool/spa valves will switch between pool and spa at 15 minutes intervals throughout the freeze condition. For the Master Cleaner circuit, freeze protection is not needed. Pool cleaner pumps receive water flow from the filter pump. SAM/SAL Position: Position of pool or spa SAM/SAL light.
Set Custom Names button	Assign a custom name to a circuit. See page 42 for details.
Special Lights button	Assign SAM, SAL color lights, Color Wheel, and other incandescent colored lights to display in the Lights page. See page 36 for details.
ScreenLogic Display	Show with: Pool: Place a button for a specific circuit under "Pool" on the Main screen. Spa: Place a button for a specific circuit under "Spa" on the Main screen. Water Features: Place a button for a circuit under "Water Features" on the Main screen. If you choose a Lights circuit function or Sam/Sal light, the light button is always displayed on the Lights screen.
Back button	Goto previous page.
Next button	Go to the next page (Step 3 of 4)
Finish button	Save current settings and exit the Configurator utility.

Setup Circuits (Step 2 of 4)

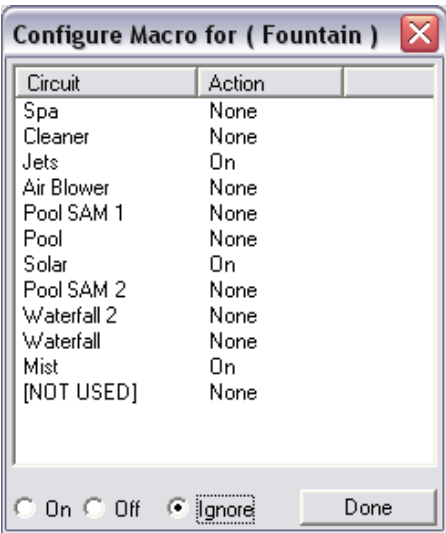
Special Lights Button

Use this button to display the “Special Lights” dialog. Lights displayed in this dialog are circuits that are assigned as “Lights.” All Lights assigned in this dialog will be controlled by the All Off, All On, Color Set, Color Sync, and Color Swim buttons on the Lights screen. Up to 12 SAm, SAL, lights and the Color Wheel can be configured to use the Color Set, Color Sync, and Color Swim lighting features.



Feature Circuit Configuration Button

The **Feature Circuit Configuration** button is enabled after you select a Feature Circuit (1 - 10) from the main list of circuits, assign a circuit name and circuit function. Use this button to access the “Configure” dialog. The selected Feature Circuit will be the name of the macro (i.e. Fountain). To access the Feature Circuits, scroll down to the end of the available AUX circuits, select the name of the Feature Circuit. There are 10 available Feature Circuit names that can be assigned multiple functions in the Configure Macro dialog. You can also assign a custom name to the circuit (see page 42).



Name	Description
Circuit	Displays the available circuits that can be used as a macro circuit. This button is enabled when a Feature Circuit is selected from the list of circuits.
On/Off Ignore	Select On to activate a selected Macro circuit. To switch a Macro off, select Off. Select Ignore, to not use the selected Macro.
Done button	Save setting and close dialog.

Feature Macro Circuits Overview

Feature Macro Circuits can control equipment that is not controlled by AUX circuits. In general, AUX circuits are used for high voltage equipment like pumps and lights, whereas Feature Macro Circuits are used for low voltage equipment like valve actuators. However, Feature Macro Circuits can go beyond this definition, and be used in other creative ways. For example, a Feature Macro Circuit can be used to create a Macro circuit in which several other circuits can be switched on or off with the same button. There is a limit of 10 Feature Macro circuits in the system. Feature Macros are not available with i5 or i5S systems.

- **Valve Actuators** - Feature Macro Circuits may be assigned for controlling up to five valve actuators per Load Center. To control a total of five actuators requires the installation of the optional Valve Module (P/N 520285) which includes three additional actuators outputs (C, D, and E) per Load Center. For more information about configuring valve actuators, refer to page 44.

***Note:** When using solar heat, note that for **shared equipment** pool and spa combination, valve A is always used for solar. For **dual body dual equipment**, valve A is always the pool and valve B is always the spa.*

- **Two-Speed Pump** - A Feature Circuit may be assigned as a way to switch a two-speed Filter Pump from high speed to low speed.
- **Spa Spillway** - A Feature Circuit may be assigned to activate the Spa Spillway effect, where in a pool/spa combination, pool water is diverted to the spa then spilled back into the pool.

Note: For details on setting up Feature Circuits, see “Creating a Feature Circuit Macro,” page 41.

Freeze Protection

Freeze protection switches on a circuit if the outdoor air temperature sensor detects the temperature is getting close to freezing (below 36° F). The system cycles through all circuits that have been assigned freeze protection, and runs the circuits for 15 minutes to stop the pipes from freezing. This is especially important if there is a pool and spa combination. If freeze protection is set to both the spa and pool circuits, the filter pump switches on and the pool and spa valves alternate every 15 minutes to keep the water moving in both the pool and spa. This process continues until the freeze condition is over.

Assign a Circuit Name and Function

Note: Before you assign circuit names in ScreenLogic, write down the circuit names and assigned buttons on the Outdoor Control Panel (in the Load Center). The circuit names you assign in ScreenLogic should match the button labels on the Outdoor Control Panel.

Circuit Functions let you assign special logic to the circuits. For example, when setting up an automatic pool cleaner pump, you would assign the circuit function MASTER CLEANER. With this “Cleaner” logic the cleaner pump would not run without the filter pump being on first, and, the cleaner pump would automatically shut off whenever the spa is switched on. The cleaner will go on after the five minute delay. Also, the automatic cleaner pump will turn off when the spa and/or solar is turned on. Be careful not to duplicate circuit names with these circuits. These circuits may also be used to activate two-speed pumps to high speed, turn additional valves, etc.

To assign a circuit name:

1. Start the ScreenLogic Configurator and click **Configure IntelliTouch**.
2. Click **Next** on the **General Setting** page. The Setup Circuits (Step 2 of 4) page is displayed.
3. From the **Circuit Name** drop box, scroll through the alphabetical list of predefined circuit names and select a circuit name. For a complete list of the IntelliTouch Circuit Functions, see page 40.

***Note:** You can also customize circuit names. To enter a custom circuit name, click **Set Custom Names**, and select one of the user names (USER NAME 01-20) and type in the new circuit name (11 characters maximum). The Custom Names (USER NAME 01-20) can be found at the bottom of the circuit name drop down box. If you are using the Tablet, use the virtual keyboard to enter the new name. For more information about the virtual keyboard button, see page 11.*

4. From the **Circuit Function** drop-down box select the function assigned to the circuit name. For a complete list of the IntelliTouch circuit functions, see page 39.

***Note:** If the assigned function requires freeze protection, select the check box for “On with Freeze.”*

***Note:** When you are finished setting the first circuit name and circuit function, repeat Steps 3 and 4 and assign the other circuits and functions. Depending on the IntelliTouch model you are programming, equipment may not be installed for all available circuits shown.*

5. **Display Circuit Button on ScreenLogic main screen:** For easy access, the assigned circuit button can be displayed under Pool, Spa, or Water Functions on the ScreenLogic Main screen. To display the button on the Main screen, select where you want the button to display in the **Show with** drop-down box.

***Note:** SAm, SAL lights, and Color Wheel buttons will always display on the Lights screen.*

6. Click **Finish** to save the current settings.

IntelliTouch Circuit Functions

The following Circuit Functions allow you to assign special logic to the circuits.

Note: To ensure proper operation, some circuits shown below will only display on certain screens. For example, *SAM* and *SAL* Lights will always display on the Lights screen, not on the Main screen.

Generic	A circuit with no special logic. Simple On/Off control of a circuit with all the programmable capabilities.
Master cleaner	Works with automatic pool cleaner pumps or cleaner valve actuator. It does the following: <ul style="list-style-type: none"> - Forces the filter pump on 5 minutes before the cleaner starts. - Turns the cleaner off when the spa is on. - Turns the cleaner off for 5 minutes when the solar heating begins.
Light	Allows special lighting features to work, such as lights All Off and All on.
Dimmer	Allows light dimming features to work. Dimming relay must be installed (P/N 520406).
SAM Light	Activates special color lighting features on the Configure Colors lights screen (see page 62) when used with SAM pool lights. The SAM light must be assigned in the Special Lights dialog to use the All Off, All On, Color Set, Color Sync, and Color Swim lighting features.
SAL Light	Activates special color lighting features on the Configure Colors lights screen (see page 62) when used with SAL spa lights. The SAL light must be assigned in the Special Lights dialog to use the All Off, All On, Color Set, Color Sync, and Color Swim lighting features.
Photon Generator	Lets Pentair Fiberworks fiber optic bulb be operated by Color Set or Color Swim programs when used with SAM and SAL lighting. This light must be assigned in the Special Lights dialog to use the All Off, All On, Color Set, Color Sync, and Color Swim lighting features.
Color Wheel	Activates special color lighting features on the Configure Colors lights screen (see page 62) when used with Pentair Fiberworks. The Color Wheel light must be assigned in the Special Lights dialog to use the All Off, All On, Color Set, Color Sync, and Color Swim lighting features.
Spillway	For pool/spa combinations where the spa is raised above the pool. This setting moves the return valve so that the filter pump pulls the water from the pool and returns it to the spa, creating a water fall effect. Automatic pool cleaners are turned off when this feature is turned on.
Floor Cleaner	This setting moves a 3-way valve every 20 minutes alternating flow between 2 cleaner system valves that feed the pop-up heads.

IntelliTouch Circuit Names

AERATOR	(NOT USED)	USER NAME 01	_____
AIR BLOWER	OZONATOR	USER NAME 02	_____
AUX 1	PATH LIGHTS	USER NAME 03	_____
AUX 2	POOL SAM 3	USER NAME 04	_____
AUX 3	SECURITY LT	USER NAME 05	_____
AUX 4	SLIDE	USER NAME 06	_____
AUX 5	SOLAR	USER NAME 07	_____
AUX 6	SPA	USER NAME 08	_____
AUX 7	SPA HIGH	USER NAME 09	_____
AUX 8	SPA LIGHT	USER NAME 10	_____
AUX 9	SPA LOW	USER NAME 11	_____
AUX 10	SPA SAL	USER NAME 12	_____
BACKWASH	SPA SAM	USER NAME 13	_____
BACK LIGHT	SPA WTRFLL	USER NAME 14	_____
BBQ LIGHT	SPILLWAY	USER NAME 15	_____
BEACH LIGHT	SPRINKLERS	USER NAME 16	_____
BENCH	STREAM	USER NAME 17	_____
BLOWER	STATUE LT	USER NAME 18	_____
BOOSTER PUMP	SWIM JETS	USER NAME 19	_____
BUG LIGHT	WTR FEATURE	USER NAME 20	_____
CABANA LTS	WTR FEAT LT	Note: Custom Circuit names can be up to 11 characters.	
CHEM. FEEDER	WATERFALL		
CHLORINATOR	WATERFALL 1		
CLEANER	WATERFALL 2		
COLOR WHEEL	WATERFALL 3		
DECK LIGHT	WHIRLPOOL		
DRAIN LINE	WTRFL LGHT		
DRIVE LIGHT	YARD LIGHT		
EDGE PUMP			
ENTRY LIGHT			
FAN			
FIBER OPTIC			
FIBERWORKS			
FILL LINE			
FLOOR CLNR			
FOGGER			
FOUNTAIN			
FOUNTAIN 1			
FOUNTAIN 2			
FOUNTAIN 3			
FOUNTAINS			
FRONT LIGHT			
GARDEN LTS			
GAZEBO LTS			
HIGH SPEED			
HIGH TEMP			
HOUSE LIGHT			
JETS			
LIGHTS			
LOW SPEED			
LOW TEMP			
MALIBU LTS			
MIST			
MOTOR VALVE			
MUSIC			

Creating a Feature Circuit Macro

Feature Macros give you the ability to combine various circuits together so a single button can operate them all at once. For example, you could create a Macro that would give you one button that turns on your spa, spa light, fountain, fountain light, and patio lights. A Macro also has the capability to switch a circuit off. You can assign a name to your Macro from the list of IntelliTouch circuit names. For the complete list of names, see “IntelliTouch Circuit Names,” page 40. You can also create your own custom name, for example, SPA PARTY could be used if there was a spa fountain which should not be on when spa is on (because it could put cold water in the spa) it can be set up in the Macro to automatically switch off when SPA PARTY is switched on. An OFF Macro can also be used to switch any number of lights off with one button.

Before you create a Feature Macro circuit, first assign a feature circuit name and function, (see page 38).

Note: A Feature circuit may not be set as Dimmers although they can turn on light dimming circuits.

To create a Macro circuit:

1. Start the ScreenLogic Configurator and tap **Configure IntelliTouch**.
2. Tap **Next** on the General Setting page. The **Setup Circuits (Step 2 of 4)** page is displayed.
3. From the main list of assigned circuits, scroll the list down after the AUX circuits until the Feature circuits are displayed.
4. Tap the **Feature Circuit configuration** button. The selected macro dialog box is displayed.
5. From the list of circuits, select the circuit that will control a valve:
 - To switch a circuit ON, tap **On**.
 - To switch a circuit OFF, tap **Off**.
 - To set a circuit to be unaffected by the macro, tap **Ignore**.

***Note:** Be careful when you select circuits to switch on. One macro can switch on another macro circuit, resulting in systems switching on or off that you do not want on or off.*

6. Tap **Done** to close and save the macro setting and close the dialog.
7. Under ScreenLogic Display, in the **Show with** box, select where you want the Macro button to appear. For more information about displaying buttons on the main screen, refer to “Setup circuits (Step 2 of 4),” page 35, and “Display a Circuit Function Button on the Main Screen,” page 42.
8. Tap **Finish** when done.

Creating Custom Names for Auxiliary Circuits

There are nearly 100 circuit names stored in the IntelliTouch software (see page 40). If you cannot find one to fit your application you can create up to 20 custom names.

To create a custom circuit name:

1. Start the ScreenLogic Configurator and tap **Configure IntelliTouch**.
2. Tap **Next** on the General Setting page. The **Setup Circuits (Step 2 of 4)** page is displayed.
3. Select an AUX circuit from the main list.
4. Tap the **Set Custom Names** button. The Custom Names dialog is displayed.
5. Tap **USERNAME-01** from the list. Enter the new circuit name in the box. The new name can be a maximum of 11 characters. The Custom Names (USER NAME 01-20) can be found at the bottom of the circuit name drop down box. If you are using the Tablet, use the virtual keyboard to enter the new name. For more information about the virtual keyboard button, see page 11.
6. Tap **Set Name** to save the custom name. The new name is displayed in the Custom Names list.
7. Tap **Done** to save and close the dialog.
8. The custom name is displayed in the main Circuit Names lists and now can be used when assigning a new circuit.

Display a Circuit Function Button on the Main Screen

An assigned circuit function can be displayed as a button on a ScreenLogic main screen. For more information about displaying circuit buttons on the main screen, refer to “Setup circuits (Step 2 of 4),” page 35.

To display an assigned circuit button:

1. Start the ScreenLogic Configurator and tap **Configure IntelliTouch**.
2. Tap **Next** on the General Setting page. The **Setup Circuits (Step 2 of 4)** page is displayed.
3. In the list of assigned circuits, select the circuit you want to change.
4. Under ScreenLogic Display, in the **Show with** box, select where you want the button to appear, under Pool, Spa or Water Features on the ScreenLogic Main screen. For example, if the AUX 2 circuit is assigned to a Cleaner, selecting Pool from the “Display with” box will display a Cleaner button under the Pool button on the ScreenLogic Main screen. Up to 20 buttons can be displayed under Water Features on the ScreenLogic Main screen. Use the right arrow button to scroll through other assigned buttons.
5. Tap **Finish** when done to save the setting.

IntelliTouch Indoor Control Panel Circuit Names

Custom circuit names used in the Configurator utility need to be updated in the IntelliTouch Indoor Control Panel in order for these names to display in the Indoor Control Panel.

To update the Indoor Control Panel to display the current circuit names:

1. Press **Menu > Setup > Advanced > Circuit Names**.
2. Select the new circuit name, then press the **Exit** button. The display will show the same circuit names as shown in ScreenLogic.

Configure Other Equipment (Step 3 of 4)

Configure Other Equipment (Step 3 of 4)

Valve Assignments

Load Center	Valve	Circuit Assigned to Valve
Load Center 1	Valve A:	USED BY SOLAR
Load Center 1	Valve B:	[UNUSED]

Circuit Assigned to Valve:

Valve Option

☐ Pump off during valve action

Chlorinator

☒ Chlorinator present

Manual Heat

☒ Spa Manual Heat

Pool / Spa

Solar Equipment

☒ Solar present ☐ Solar is a heat pump

Delays

☐ Pump on during heater cool-down

Circuits Needing High Speed Pump

Add a Circuit Remove Circuit

<< Back Next >> Finish

Name	Description
Valve Assignments	<p>Displays the circuits assigned to valves. All IntelliTouch systems can control two auxiliary valve actuators (A and B) for applications such as solar heating and water features. With the addition of the Valve Module (P/N 520285) installed in the Load Center, the system will accommodate up to three additional actuators (C, D, and E) for a total of five.</p> <p>Load Center: Valves available in the main Load Center.</p> <p>Valve: Available Load Center valve circuits A and B. Valve A may not be used with any other circuit when the "Solar present" check box is selected. Note: When using solar heat, note that for shared equipment pool and spa combination, valve A is always used for solar. For dual body dual equipment, valve A is always the pool and valve B is always the spa.</p> <p>Circuits Assigned to Valve: Assign a circuit to a valve.</p>
Valve Option	<p>Pump off during valve action: Switch the pump off before valve actuation.</p>
Chlorinator	<p>Chlorinator Present: Check this box if there is a chlorination unit installed. For more information about operating the chlorinator unit, see page 75.</p>
Manual Heat	<p>Spa Manual Heat: Select this option to automatically begin spa heating whenever the spa is turned on manually. The default setting is on (box checked). If your spa is programmed to filter, the spa will not heat with this option enabled.</p>

Configure Other Equipment (Step 3 of 4) - Continued

Name	Description
Pool/Spa - Solar Equipment	<p>Pool/Spa equipment options indicates shared equipment. If dual body equipment is being used, Pool and Spa options are displayed, each with their own sets of equipment.</p> <p>Solar Present: Solar heating is available. When this option is selected, Valve A: Used by Solar, is displayed in the Valve Assignments list, indicating that valve A is being used for solar equipment.</p> <p>Solar is a Heat Pump: This feature uses heat pump controls instead of Solar. Select this check box if a heat pump is being used in place of a solar heating system.</p>
Delays	<p>Pump on during heater cool-down: Select this check box if you have a heater or other equipment that requires that the filter pump stay on for ten minutes after the equipment goes off.</p>
Circuits Needing High Speed Pump	<p>This list displays the Circuits and Feature circuits that need to have the pump in high speed mode when switched on.</p> <p>You can assign multiple circuits to a high speed pump. If any of these circuits are on, it will switch the pump to high speed mode. For example, when a fountain switches on, the pump should be in high speed mode, and in slow speed mode when switched off.</p> <p>Use the Add a Circuit or Remove Circuit button to add or remove a circuit that requires a two speed pump.</p>
Back button	Goto previous page.
Next button	Go to the next page (Step 4 of 4).
Finish button	Save current settings and exit the Configurator utility.

Configuring Valve Actuators (Controlled by AUX or Feature Circuit)

All IntelliTouch systems can drive two auxiliary valve actuators (A and B) for applications such as solar heating and water features. With the addition of the Valve Module (P/N 520285), installed in the Load Center, the system can accommodate up to three additional actuators (C, D, and E) for a total of five. Before configuring auxiliary valve actuators, first assign names to the AUX or FEATURE circuits (page 35). Auxiliary valve actuators can be controlled by any **AUX** circuit or **Feature** circuit. Please note that the i5 and i5S models do not include FEATURE circuits and therefore must use the AUX circuits for controlling valve actuators. By using FEATURE circuits to control valve actuators, you can conserve your AUX circuits for high voltage relays for controlling pumps and lights. You can also use Macro circuits to couple valve actuators with AUX circuits for specific applications.

Use the following information to calculate the number of available valves:

- Main Load Center or Power Center (all models) = 2 (A & B)
- Valve Module (if yes enter 3) = 3 (C, D & E)
- Number of Expansion Centers (3 x 2) = 6 (A & B)
- Number of Valve Modules on Expansion Center (1 x 3) = 3 (C, D & E)

TOTAL = 14

Configuring Valve Actuators

To assign a valve actuator:

1. Start the ScreenLogic Configurator and tap **Configure IntelliTouch**.
2. Tap **Next** on the General Setting page and on the Setup Circuits page. The **Configure Other Equipment (Step 3 of 4)** page is displayed.
3. Select the Load Center or Expansion Center(s) and the AUX valve actuator (A, B) you wish to configure from the **Valve Assignments** list.

***Note:** When using solar heat, note that for **shared equipment** pool and spa combination, valve A is always used for solar. For **dual body dual equipment**, valve A is always the pool and valve B is always the spa.*

Valve A: Can be used for solar heating or auxiliary valve actuator control. If the “Solar present” check box is selected “USED BY SOLAR” is displayed in the Valve assignment list. Valve A is automatically configured as a solar heating valve actuator.

Valve B: Can be configured to be controlled by any circuit. Resides on the Personality board.

Valves C D E: Reside on the optional Valve Module board (P/N 520285) that is plugged into the Personality board.

4. In the **Circuit Assigned to Valve** box, select the circuit that you would like to use to control the valve actuator.
5. Repeat steps 3 and 4 for each valve actuator.
6. Tap **Finish** when done.

Setting up Additional Equipment

The following describes how to set up any special equipment that may be attached. Your system may or may not have this equipment installed.

The following information describes:

- **Setting up a two-speed pump** - Setup circuits that switch the filter pump from low to high speed.
- **Setup Solar equipment** - Enable solar or heat pump.
- **Cool-down cycle for the heater** - Set a cool-down cycle for heaters that require it.
- **Enable “Spa Manual Heat” control** - Heats the spa using the Spa button on the ScreenLogic Main screen or the spa-side control, even when the heater is set to OFF in the Heat screen. This lets the homeowner heat the spa on-demand. Timed programs will not heat the spa.

Setting up a Two-Speed Pump

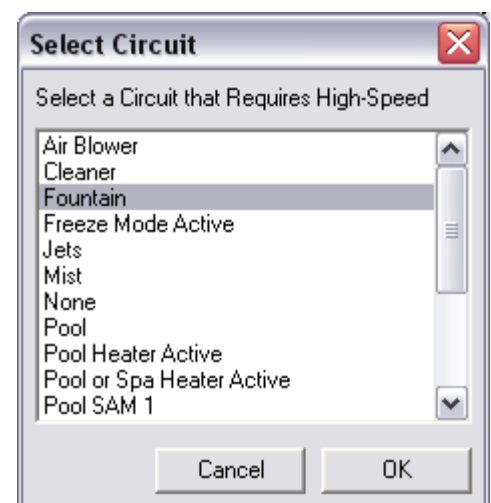
Equipment circuits displayed on this screen will automatically switch a two-speed filter pump to high speed when these circuits are switched on. For example you can have the Filter pump switch to high speed whenever the JETS or CLEANER is on.

To assign a two-speed pump to a circuit:

1. Start the ScreenLogic Configurator and tap **Configure IntelliTouch**.
2. Tap **Next** on the General Setting page and on the Setup Circuits page. The **Configure Other Equipment (Step 3 of 4)** page is displayed.
3. Scroll through the previously assigned circuit names to add another circuit for switching filter pump to high speed. Select a circuit to assign to a high speed pump from the **Add a circuit** box. Continue to add another circuit. You can use a Feature Circuit as one of the circuits which can switch the pump to high speed (except for models i5 and i5S).

***Note:** With a dual equipment system i10+3D, one circuit button is assigned to control the spa pump and the pool pump. For more details, refer to “Configure Other Equipment (Step 3 of 4),” page 43.*

4. Repeat step 3 for each circuit requiring a two speed pump.
5. Tap **Finish** when done.



Setup Solar Equipment

Solar equipment is configured in the “Configure Other Equipment (Step 3 of 4)” dialog, page 43.

To configure solar equipment:

1. Start the ScreenLogic Configurator and tap **Configure IntelliTouch**.
2. Tap **Next** on the General Setting page and on the Setup Circuits page. The **Configure Other Equipment (Step 3 of 4)** page is displayed. For i10+3D Dual Equipment, tap the **Solar present** check box for each body of water with solar heating.
3. Tap the **Solar present** check box to enable solar heating. Valve A: USED BY SOLAR is displayed indicating that valve A is assigned for solar operations.
 - If your heat pump is being used instead of solar panels, tap the **Solar is a heat pump** check box, then assign a circuit to the valve in the “Circuit Assigned to Valve” box.

***Note:** If solar heat source is enabled (Solar present check box selected) then the **Valve A** actuator will be dedicated to the solar valve actuator. Setting the system to Heat pump (Solar is a heat pump) will free **Valve A** for use on other valves.*

4. Tap **Finish** when done.

Set a Cool-Down Cycle for the Heater

To activate the pump during a heater cool-down:

1. Start the ScreenLogic Configurator and tap **Configure IntelliTouch**.
2. Tap **Next** on the General Setting page and on the Setup Circuits page. The **Configure Other Equipment (Step 3 of 4)** page is displayed.
3. Tap the **Pump on during heater cool-down** check box under the “Delays” option.
4. Tap **Finish** when done.

Note: Pentair heaters do not require this feature.

Enable Manual Spa Heat Control

If this option is selected, your spa will begin to heat whenever it is manually turned on, (by pressing the Spa button on the ScreenLogic main screen), even if the heater is set to OFF. Your spa will also begin to heat when turned on by the spa-side remote, or QT4 wireless remote. This feature allows you to program your spa to filter daily with the heater set to off, and then be ready to heat whenever the SPA button is pressed manually on the ScreenLogic Main screen. This feature is switched on by default.

To set manual heat control for the spa:

1. Start the ScreenLogic Configurator and tap **Configure IntelliTouch**.
2. Tap **Next** on the General Setting page and on the Setup Circuits page. The **Configure Other Equipment (Step 3 of 4)** page is displayed.
3. Tap the **Spa Manual Heat** check box.
4. Tap **Finish** when done.

Chlorine Generator

The IntelliTouch system is designed to operate with the following salt chlorine generators:

- AutoPilot **Pool Pilot Digital**
- GoldLine **Aqua Rite**
- Clear Tech Automation **AutoClear Plus**

Note: Call your manufacturer for compatibility with IntelliTouch systems.

Activate the Chlorinator Control Interface

Before operating the chlorinator control interface you must first activate the system to control the chlorinator from the ScreenLogic. ScreenLogic can control the chlorinator but does not turn the chlorination system on or off. When the chlorinator control is disabled in ScreenLogic, the chlorinator is still operating but must be controlled at the chlorinator control panel.

To obtain chlorination status and make adjustments:

1. Start the ScreenLogic Configurator and tap **Configure IntelliTouch**.
2. Tap **Next** on the General Setting page and on the Setup Circuits page. The **Configure Other Equipment (Step 3 of 4)** page is displayed.
3. Tap the **Chlorinator present** check box to enable chlorination.
4. Tap **Finish**.

Note: For information about Chlorinator user controls, refer to “Equipment Tab,” page 73.

Configure iS10 Spa-Side Remote (Step 4 of 4)

Configure Spa-Side Remotes (Step 4 of 4)

iS10 #1 | iS10 #2 | iS10 #3 | iS10 #4 | iS4 #1/#2 | Quick Touch

	Top Row	Bottom Row
Button 1	Heat Boost	None
Button 2	Spa	None
Button 3	Jets	None
Button 4	Air Blower	None
Button 5	Waterfall	None

<< Back Finish

Name	Description
iS10 #1, #2, #3, #4	Assign circuits for the installed iS10 Spa-Side Remotes.
Button 1, 2, 3, 4, 5 (Top Row)	Use the drop-down box to select an available circuit for the top row buttons 1, 2, 3, 4, and 5.
Button 1, 2, 3, 4, 5 (Bottom Row)	Use the drop-down box to select an available circuit for the bottom row buttons 1, 2, 3, 4, and 5.
Back button	Go to previous page.
Finish button	Save current settings and exit the Configurator utility.

Note: For information about configuring switches on the iS10 Spa Side remote, refer to “Configure iS4, iS10 and QT4 QuickTouch,” page 52.

Configure iS4 Spa-Side Remote (Step 4 of 4) - Continued

Configure Spa-Side Remotes (Step 4 of 4)

iS10 #1iS10 #2iS10 #3iS10 #4iS4 #1/#2Quick Touch

IS4 #1

IS4 #2

Button 1

Heat Boost

*

Button 2

Heat Enable

*

Button 3

Spa

*

Button 4

Jets

*

None

*

None

*

None

*

None

*

* Shared with IS10#4 and IS4#1/#2

<< Back

Finish

Name	Description
iS4 #1/#2	Assign circuits for the installed iS4 Spa-Side Remote.
Button 1, 2, 3, 4	Use the drop-down box to select an available circuit for buttons 1, 2, 3, and 4.
Back button	Go to previous page.
Finish button	Save current settings and exit the Configurator utility.

Note: For information about configuring switches on the iS10 Spa Side remote, refer to “Configure iS4, iS10 and QT4 QuickTouch,” page 52.

Configure QT4 Controller (Step 4 of 4) - Continued

Configure Spa-Side Remotes (Step 4 of 4)

iS10 #1 iS10 #2 iS10 #3 iS10 #4 iS4 #1/#2 Quick Touch

Quick Touch

Button 1 Spa

Button 2 Jets

Button 3 Waterfall

Button 4 Mist

<< Back Finish

Name	Description
QuickTouch (QT4)	Assign circuits for the Quicktouch (QT4) four function remote.
Button 1, 2, 3, 4	Use the drop-down box to select an available circuit for buttons 1, 2, 3, and 4.
Back button	Go to previous page.
Finish button	Save current settings and exit the Configurator utility.

Note: For information about configuring switches on the iS10 Spa Side remote, refer to “Configure iS4, iS10 and QT4 QuickTouch,” page 52.

Configure iS4, iS10, and QT4 QuickTouch

You can specify any iS4, iS10, or QT4 spa-side remote button to control different functions.

To configure the Spa-Side remotes:

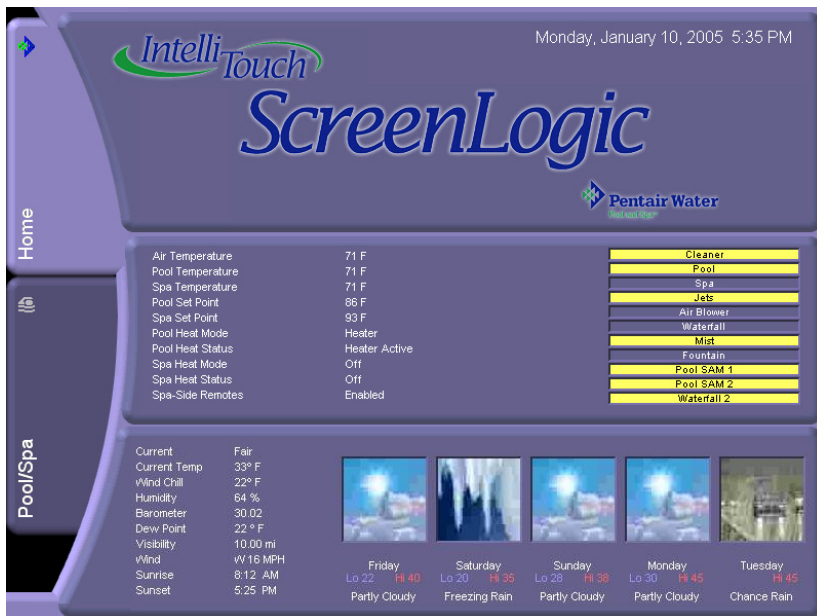
1. Start the ScreenLogic Configurator utility and click **Configure IntelliTouch**.
2. Click **Next** on the General Setting, Setup Circuits and the Configure Other Equipment screen. The **Configure Spa-Side Remotes (Step 4 of 4)** page is displayed.
3. Select the previously assigned circuit names that will control a valve.
 - **For iS10:** Select **iS10 #1** for the first iS10 spa-side remote access the setup dialog. The iS10 has ten switches arranged in two rows of buttons. If there are multiple remotes, select **iS10 #2, iS10 #3, or iS10 #4**.
 - **For iS4:** Select the **iS4#1** (or #2 if there are multiple remotes) tab access the setup dialog. The iS4 has four switches that can be configured.
 - **For QuickTouch (QT4):** Select the **Quick Touch** tab to access the QuickTouch setup dialog. The QT4 has four switches that can be configured.
4. Tap the down-arrow for each of the buttons you want to configure, then select the circuit from the list.
5. Press **Finish** when done.

ScreenLogic

Using ScreenLogic

Home Screen

The Home screen can be configured to display the current time, date and weather conditions for your location as well as system information.



Tablet with Broadband Internet connection



PDA with Broadband Internet connection

Name	Description
Current Conditions	<p>Depending on how ScreenLogic is configured, the Home screen can display weather conditions for your location, or system information. These settings are configured on the "General Settings" page in the Configurator utility. See page 33 for details.</p> <p>The Home screen displays a summary of the current weather conditions for your location. ScreenLogic must be connected to a Broadband Internet connection to display weather conditions.</p> <p>Current Temp: Current temperature shown in degrees in fahrenheit. Wind Chill: Current wind chill factor shown in degrees in fahrenheit. Humidity: Current humidity shown. Barometer: Current barometric pressure. Dew Point: Current dew point. Visibility: Current visibility shown in miles. Wind: Current wind direction shown in miles per hour. Sunrise: Current time of sunrise for your location. Location is set via Longitude and Latitude settings. See page 33 for details. Sunset: Current time of sunset for your location. Location is set via Longitude and Latitude settings. See page 33 for details.</p> <p>Weather pictures: Displays the weather forecast with high and low temperatures.</p>
Day, Month, Year and Time	Displays the current day, month, year and time. See page 33 for details.
Pool/Spa Tab	Tap this tab to access the Main Screen .

Main Screen

The Pool/Spa Main screen displays the main control buttons for the pool, spa, and user defined water features.

Pool control button: Switches on Filter Pump and fires heater. Shared equipment systems (i5, i7+3, i9+3); rotates valves to pool position.

For shared equipment: When both Heat Mode buttons for the pool and spa are set to on, if the Pool button is switched on, the Spa button is off. The Heat Status display indicates that heat is switched off to the spa while it is being used to heat the pool. This button by default is always displayed on the Main tab.

To assign circuit buttons, see “Setup Circuits,” page 35.

Pool/Spa heat controls: The Heat Mode switches control the current heat source being used.

Actual Temp displays the current temperature of the pool/spa water via the water temperature sensor.

Set Point displays the current temperature that the heater is set to.

Yellow/Grey button: A yellow button indicates that the circuit is switched **On**. A grey button indicates that the circuit is switched **Off**. Tap the button to switch a circuit on, then tap it again to switch it off.

Spa control buttons: For shared (i5, i7+3, i9+3) and dual (i10+3D) equipment systems; switches on filter pump, rotate valve actuator (to isolate spa water from pool water), and fires heater.

Water Feature buttons: These buttons are user defined circuits. To assign circuit buttons, see “Setup Circuits,” page 35.

Default Home Screen: After five minutes, if there is no activity, the Home screen will be displayed.



Tabs:

Lights: Control your pool, spa, and landscape lighting from this screen, see page 59.

Schedule: Program pool, spa and lighting schedules from this screen, see page 66.

History: View historical usage data for your pool, spa, lights and solar, see page 72.

Equipment: Displays general system errors, chlorinator controls, system delays and spa-side enable/disable controls, see page 73.

Main Screen (Continued)

The Pool/Spa Main tab screen displays the main control for the pool, spa, and water features.



Name	Description
Pool/Spa/Water Features	<p>Displayed circuit buttons are user assigned as configured in the Configurator utility. For more information about configuring ScreenLogic, refer to page 32. User defined circuit names can be assigned to any of the displayed buttons. For more information about displaying buttons on the main screen, refer to “Setup circuits (Step 2 of 4),” page 35 and “Display a Circuit Function Button on the Main Screen,” page 42</p> <p>Pool/Spa buttons: Use the Pool and Spa buttons to switch on the pool filter pump and heater (if Spa manual heat is enabled). For shared equipment systems (i5, i7+3 and i9+3); rotates valves to the pool position.</p> <p>Heat Mode buttons: Use these buttons to select the heat source. The selections are:</p> <ul style="list-style-type: none">■ Off: Switch off heat source.■ Heater: Pool heater is enabled.■ Solar Preferred or Heat Pump Preferred: If possible, use solar heat source.■ Solar or Heat Pump: Select Solar or Heat pump as the heat source. <p>Heat Status: Displays the current heat source being used. Also indicates when the heat source is switched off.</p> <p>Warmer button: Raise the set point pool temperature.</p> <p>Cooler button: Lower the set point pool temperature.</p> <p>Actual Temp: Displays the current pool temperature.</p> <p>Set Point: Current pool temperature set point as set by the Warmer and Cooler buttons.</p>

Main Screen (Continued)

Name	Description
Water Features	<p>The following circuit buttons are examples of circuits that you might display under Water Features.</p> <p>The following buttons displayed are defined in the Configurator. For more information about displaying buttons on the main screen, refer to “Setup circuits (Step 2 of 4),” page 35 and “Display a Circuit Function Button on the Main Screen,” page 42</p> <p>Waterfall button: This Feature Macro circuit has been assigned as a Waterfall. This button example switches on the pool filter pump and heater (if Spa manual heat is enabled). For shared equipment systems (i5, i7+3 and i9+3; rotates valves to the pool position. for single body systems (i5S, i9+3S); sets the pool temperature to Set point.</p> <p>Fountain button: Switches on the pool filter pump and hThis button example switches on the pool filter pump and heater (if heater is enabled). For shared equipment systems (i5, i7+3 and i9+3); rotates valves to the pool position. For Single body systems (i5S, i9+3S); sets the pool temperature to Set point. Heater (if heater is enabled). For shared equipment systems (i5, i7+3 and i9+3); rotates valves to the pool position. For Single body systems (i5S, i9+3S); sets the pool temperature to Set point.</p>

Configuring Pool and Spa Heating System Options

The IntelliTouch system allows for many different pool and spa heating options. In some instances, more than one heating system may be installed. The system can then automatically select the heating system that is most effective for your settings. However, before the system can take advantage of these options the system must be told what kind of heating systems are installed.

To configure the heating system options for your pool or spa, use the **Heat Mode** button.

- From the ScreenLogic main screen, in the for **Pool** or **Spa**, tap a **Heat Mode** button to select the type of heat option to use. The Heat Mode choices are:
 - OFF:** No heating even though pump and other circuits may be operating.
 - HEATER:** Use the gas heater only.
 - SOLAR PREF. or HEAT PUMP PREF. -** Solar Preferred is used when solar and gas heating are available, and you want to use solar heating only when it is most effective. Heat Pump Pref. is displayed if solar is set up as a Heat pump (see page 43),
 - SOLAR or HEAT PUMP:** Solar is used when solar heating system is the only heat source.
- To activate a heat source, tap the **Heater** or **Solar** button. To switch off the heater, tap the **Off** button.
- Tap **Finish** when done.

Change the Pool and Spa Temperature

All pool and spa heat modes and temperature controls are located on the Main screen. The pool or spa will heat to the settings specified on this screen.

Changing Pool Heat Settings

To raise the pool water temperature:

1. From the main screen choose Heater, Solar Preferred or Solar in the **Heat Mode** selection.
2. Tap the pool **Warmer** button. The pool will heat to the settings specified as indicated by the Set Point.

To lower the pool water temperature:

- Tap the **Off** button for **Heat Mode** or tap the **Cooler** button to change the new Set Point temperature.

Changing Spa Heat Settings

To raise the Spa water temperature:

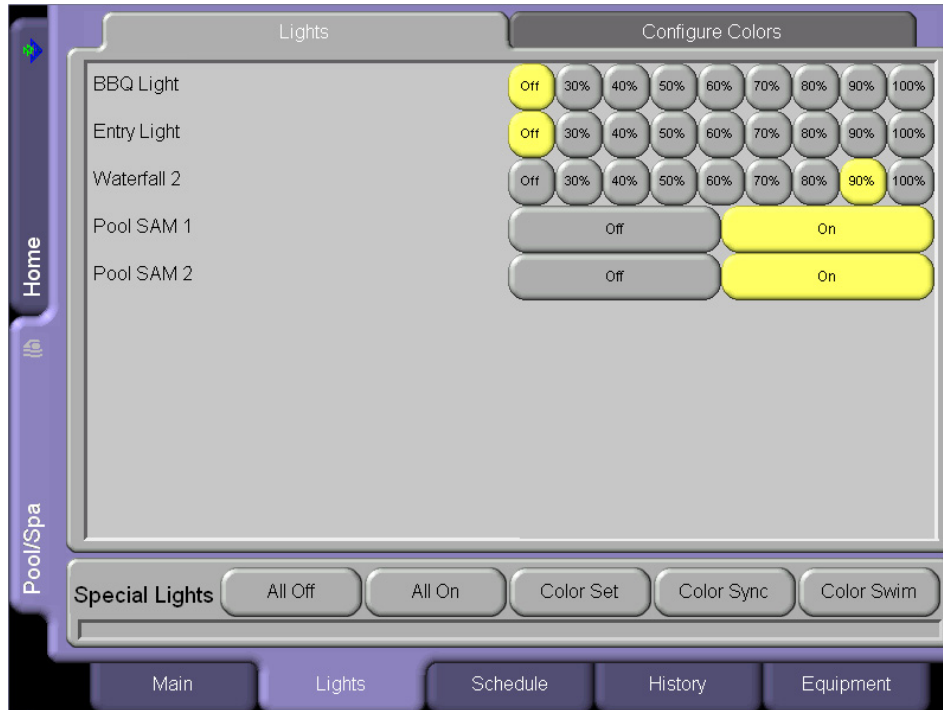
1. From the main screen choose Heater, Solar Preferred or Solar in the **Spa Heat Mode** selection.
2. Tap the spa **Warmer** button. The pool will heat to the settings specified as indicated by the Set Point.

To lower the spa water temperature:

- Tap the **Off** button for **Heat Mode** or tap the **Cooler** button to change the new Set Point temperature.

Lights Screen

For lights to display in the Lights screen, and for the Special Lights buttons to work, you must first assign the light in the Special Lights dialog. For more information, refer to Setup Circuits (Step 2 of 4), page 35. From the Lights screen you can switch lights on or off and dim selected incandescent lights. Pentair SAM and SAL lights cannot be dimmed. Before lights can be dimmed a qualified electrician must wire them with the IntelliTouch Dimmer Module (P/N 520406) in the Load Center. Only incandescent tungsten filament lights may be dimmed (Halogen lights cannot be dimmed). Before a light is displayed on this screen, circuits must first be assigned as a light in the “Setup Circuits” page of the Configurator utility. The light circuit name must be assigned a dimmer circuit function. To assign a circuit function, see “Assign a Circuit Name and Function,” page 38.



Name	Description
Lights	<p>This screen can display up to 40 assigned lights.</p> <p>The following are examples of different lights that can displayed in the Lights screen. To dim a selected light, select a dimming percent value button from 30% to 100%.</p> <p>BBQ Light: Select the Off button to switch the light off. To dim the light, select a dimmer button from 30% to 100%.</p> <p>Entry Light: Select the Off button to switch the light off. To dim the light, select a dimmer button from 30% to 100%.</p> <p>Waterfall: Select the Off button to switch the light off. To dim the light, select a dimmer button from 30% to 100%.</p> <p>Pool SAM 1: Select the All Off or All On button to switch the light off or on. In order to use the "Special Lights" buttons, the light must be assigned in the "Special Lights" dialog (see page 35) .</p> <p>Pool SAM 2: Select the All Off or All On button to switch the light off or on. In order to use the "Special Lights" buttons, the light must be assigned in the "Special Lights" dialog (see page 35) .</p>

Lights Screen (Continued)

Name	Description
Special Lights Buttons	<p>For lights to display in this screen, and for the Special Lights buttons to work, you must first assign the light in the Special Lights dialog. For more information, refer to Setup Circuits (Step 2 of 4), page 35.</p> <p>All Off: Switches off all lights that have been assigned in the Special Lights dialog in step 2 of the Configurator utility (see page 35).</p> <p>All On: Switches on all lights that have been assigned in the Special Lights dialog.</p> <p>Color Set: Switches on all SAM, SAL, and FIBERworks lights that have been assigned in the Special Lights dialog.</p> <p>Color Sync: Activates the Color Sync feature for all SAM, SAL, and Fiberworks lights that have been assigned in the Special Lights Dialog.</p> <p>Color Swim: Activates the Color Swim feature for all SAM, SAL, and Fiberworks lights that have been assigned in the Special Lights dialog.</p> <p>Color Mode Status Bar: The red bar indicates the activation status and current completion time. Activating the Color Set, Color Sync, or Color Swim features is not immediate, it can take up to one minute for the process to complete.</p>

Dim Lights

Lights that have dimming functionality can be dimmed from the Lights screen. Only incandescent tungsten filament lights may be dimmed. *SAm*, *SAL*, Fiber optic, or Halogen lights cannot be dimmed. The feature circuit must be assigned a dimmer circuit function. To assign a circuit function, see “Assign a Circuit Name and Function,” page 38. In order to dim lights, the Dimmer Module (P/N 520406) must be installed by a qualified electrician in the Load Center.

To dim lights:

1. From the Main screen, tap the **Lights** tab.
2. Tap one of the Dimmer buttons to set the dimming level for the light. Dimmer percent values are from 30% to 100%. The light will adjust to the set dimming level.

Note: Macros can turn on light dimming circuits, but lights cannot be dimmed through the macro. The dimming level must be changed for each light dimming circuit.

Special Lighting Features

If you have at least one Pentair *SAm* and/or *SAL*, and/or *FIBERworks* lighting systems, you can use the special *Color Set*, *Color Swim* and *Color Sync* lighting features to change the lighting settings. Up to 12 of these light systems can be independently controlled from the **Lights** screen.

The Color Swim feature creates the illusion of bands of color moving through the water by switching on each light with a specific color in a specified order and at different time intervals. You can customize the Color Swim feature lighting effect by offsetting the delay time between the various installed Pentair colored lights. The order and time delay between lights can be mixed and matched to create many different effects. For example, colors moving left to right, one body of water to another, from the middle outward, etc. Once programmed all these effects work at the touch of a button. The Color Swim circuit must have its own relay and separate circuit. This lighting feature is not available IntelliTouch models i5, and i5S.

If you have at least one Pentair *SAm* and/or *SAL*, and/or *FIBERworks* lighting system, you can use the special light features to change the lighting settings.

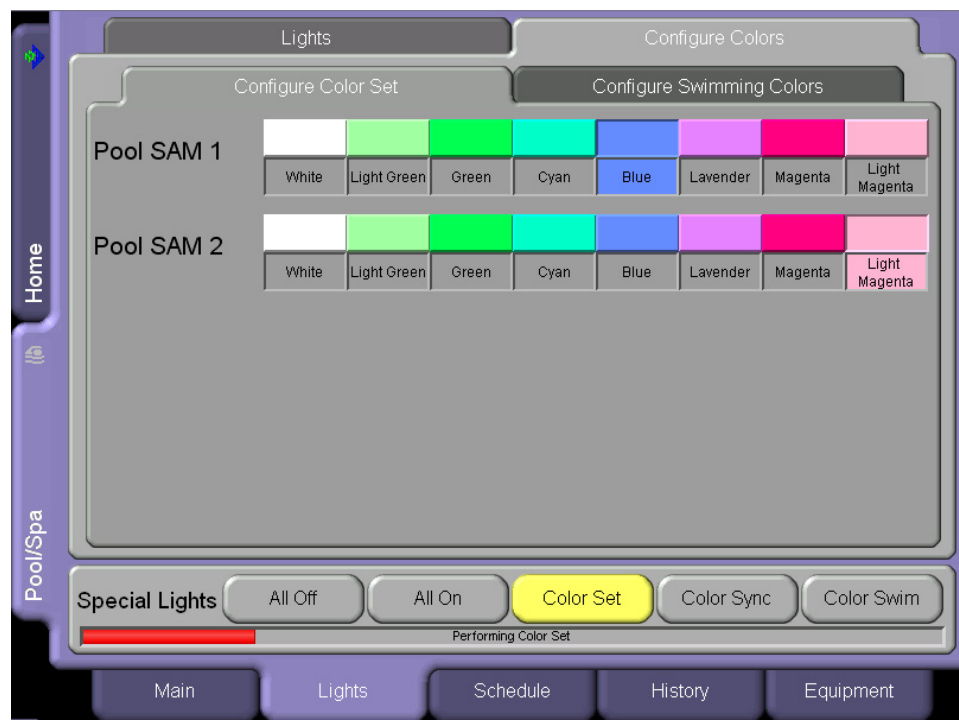
- **Color Set** - Allows a combination of up to 12 *SAm*, *SAL*, or *FIBERworks* lighting circuits to be preset to specific colors. Each light must have its own relay and separate circuits. This feature is not available for the i5, and i5S systems.
- **Color Sync** - Causes all color changing lights to synchronize their colors.
- **Color Swim** - Allows a combination of up to twelve *SAm*, *SAL*, or *FIBERworks* lighting circuits to be preset to transition through colors in sequence. Each light must have its own relay and separate circuits. This feature is not available for the i5, and i5S systems. The Swimming Colors or Color Swim feature creates the illusion of bands of color moving through the water by switching on each light with a specific color in a specified order and at different time intervals. The order and time delay between lights can be mixed and matched to create many different effects. For example, colors moving left to right, one body of water to another, from the middle outward, etc.

Before you start, check the following:

- The **AUX** circuits that control your lighting have been assigned names and one of these lighting circuit functions: Light, Color Wheel, Photon Generator, *SAm* light, *SAL* light, or Dimmer.
- Make sure that your *SAm* and *SAL* lights have been set up in **Circuit Functions** as *SAm* and *SAL* lights.
- Make sure to assign each colored lights in the appropriate position in the Configurator utility (see Setup Circuits (2 of 4), page 35).
- Make sure that any light you want to be controlled by the All on, All off, Color Sync, Color Set, and Color Swim feature are assigned in the “Special Lights” dialog in the Configurator utility (see page 36).
- If your system has *FIBERworks* lighting, it must be setup as a “Photon Generator” for the circuit controlling the light bulb and “Color Wheel” for the circuit controlling the color wheel. These setup steps are usually done by the installer. For details, refer to see “Assign a Circuit Name and Function,” page 38.

Lights Screen: Configure Set Colors Tab (Color Set)

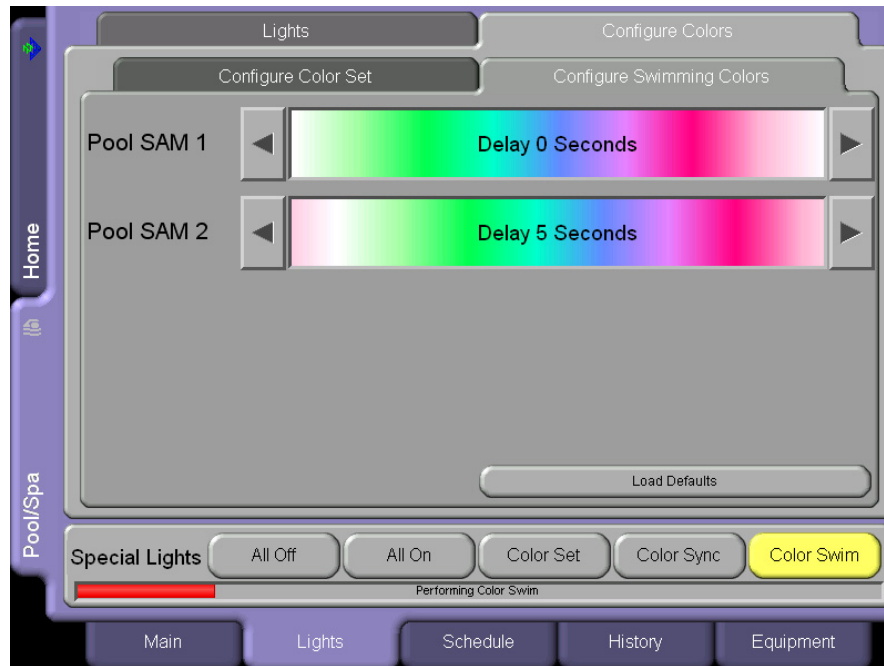
The Configure Set Colors screen displays color selection, and control modes for the Pentair SAM, SAL, and FIBERworks color lights. The Pentair Color Set, Color Sync, and Color Swim features are only available for IntelliTouch models i7+3, i9+3, i9+3S, and i10+3D. Before SAM and SAL lights display on this screen, circuits must first be assigned in the “Setup Circuits” page of the Configurator utility, then selected in the “Special Lights” dialog. For more information, refer to “Set Circuits (Step 2 of 4),” page 35.



Name	Description
Configure Set Colors	<p>The following are examples of lights that you can assign in the Special Lights dialog to display in this screen.</p> <p>Pool SAM 1: Select colors to use for pool SAM 1 lights.</p> <p>Pool SAM 2: Select colors to use for pool SAM 2 lights.</p>
Special Lights	<p>For lights to display in this screen, and for the Special Lights buttons to work, you must first assign the light in the Special Lights dialog. For more information, refer to Set Circuits (Step 2 of 4), page 35.</p> <p>All Off: Switches off all lights shown on the Lights page.</p> <p>All On: Switches on all lights shown on the Lights page.</p> <p>Color Set: Switches on all Color Set SAM, SAL, and Fiberworks lights.</p> <p>Color Sync: Activates the Color Sync feature for all SAM SAL, and Fiberworks lights.</p> <p>Color Swim: Activates the Color Swim feature for all SAM, SAL, and Fiberworks lights.</p> <p>Color Mode Status Bar: The red bar indicates the activation status and current completion time. Switching lights on or off, or activating the Color Set, Color Sync, or Color Swim features is not immediate, it can take up to one minute to complete.</p>

Lights Screen: Configure Swimming Colors Tab (Continued)

Before *SAM* and *SAL* lights display on this screen, circuits must first be assigned in the “Setup Circuits” page of the Configurator utility, then selected in the “Special Lights” dialog. For more information, refer to “Set Circuits (Step 2 of 4),” page 35.



Name	Description
Configure Colors Swim	<p>Before SAM and SAL lights display on this screen, circuits must first be assigned in the “Setup Circuits” page of the Configurator utility, then also selected in the Special Lights dialog. For more information, refer to “Set Circuits (Step 2 of 4),” page 35.</p> <p>Pool SAM 1: Use the side arrow buttons to increase or decrease the delay time in seconds, between the Pool SAM 1 and SAM 2 lights.</p> <p>Pool SAM 2: Use the side arrow buttons to increase or decrease the delay time in seconds, between the Pool SAM 1 and SAM 2 lights.</p> <p>Load Default button: Resets the current lights delay time to 5 seconds between all lights.</p>
Special Lights	<p>For lights to display in this screen, and for the Special Lights buttons to work, you must first assign the light in the Special Lights dialog. For more information, refer to Set Circuits (Step 2 of 4), page 35.</p> <p>All Off: Switches off all SAM, SAL, and Fiberworks lights.</p> <p>All On: Switches on all SAM, SAL, and Fiberworks lights.</p> <p>Color Set: Switches on all Color Set SAM, SAL, and Fiberworks lights.</p> <p>Color Sync: Activates the Color Sync feature for all SAM, SAL, and Fiberworks lights.</p> <p>Color Swim: Activates the Color Swim feature for all SAM, SAL, and Fiberworks lights.</p> <p>Color Mode Status Bar: The red bar indicates the activation status and current completion time. Switching lights on or off, or activating the Color Set, Color Sync, or Color Swim features is not immediate, it can take up to one minute to complete.</p>

Color Set Lighting Feature

The Color Set feature allows any combination of up to 12 SAM, SAL, or FIBERworks lighting circuits to be preset to specific colors. This feature requires at least one SAM, SAL, or FIBERworks lighting product controlled by separate AUX circuits.

To set up Color Set lights:

1. From the Main screen, tap the **Lights** tab.
2. Tap the **Configure Colors** tab.
3. Tap the color for SAM, SAL, or FIBERworks lights. Each, then tap the **Color Set** button to preset the lights to the selected color. The Special Lights bar indicates the progress.
4. Tap the **Main** tab when finished to return to the main screen.

Set up Swimming Colors (Color Swim)

This feature requires at least one SAM, SAL, or FIBERworks lighting product be controlled by separate AUX circuits.

To set up Swimming Colors lights:

1. From the main screen, tap the **Lights** tab.
2. Tap the **Configure Colors** tab.
3. Tap the **Configure Color Swim** tab.
4. Select a displayed pool or spa light. Tap either of the side arrows to set delay time between the lights. To achieve different swimming color effects, try setting SAM 1 light to 0 seconds, then set SAM 2 to 16 seconds. Set a higher delay time for lights that are spread further apart. Use the **Load Defaults** button to reset the delay time to 5 seconds between all lights.
5. Tap **Color Swim** to activate the swimming color feature. The Special Lights bar indicates the progress.

***Note:** It may take up to a minute or more for Color Swim, or Color Sync to function as programmed depending on what kind of light you are activating and what state it was in when the effect was activated. The displayed red bar under the Special Lights buttons, indicates the progress.*

Color Sync

This feature switches all SAm, SAL, and FIBERworks colored lights on and synchronizes the lights.

To synchronize lights:

1. From the Main screen, tap the **Lights** tab.
2. Tap the **Color Sync** button to activate all color changing lights to synchronize with each other. The process may take up to a minute. The displayed red bar indicates the progress.

Switching Lights All on/All off

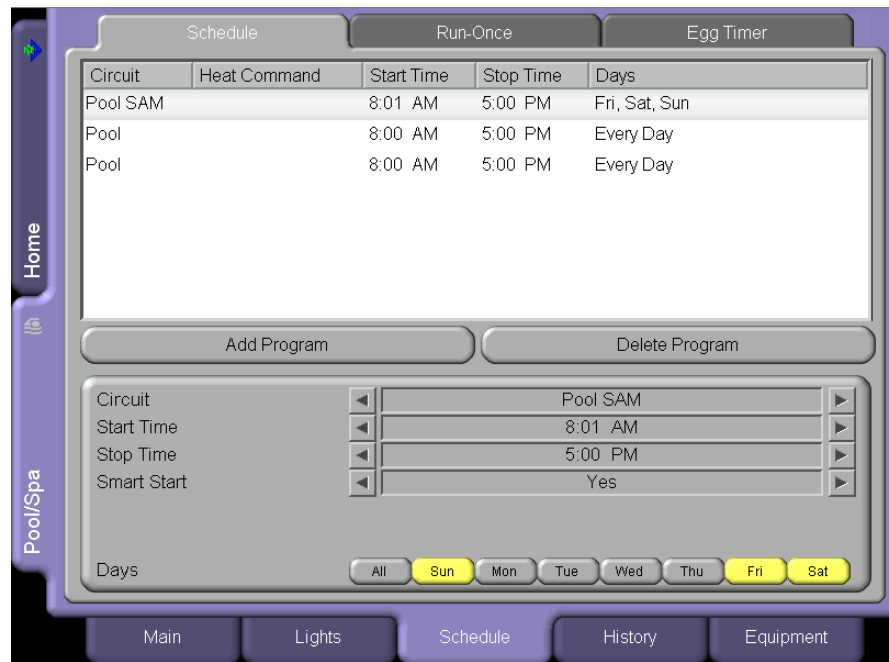
For lights to display in the Lights screen and to be activated by the All On, All Off, Color Sync, Color Set and Color Swim they must be assigned in the “Special Lights” dialog (see page 36). If a light circuit is not assigned in the “Special Lights” dialog, it can still be displayed in the Lights screen, and individually switched on or off using the light button. Depending on your IntelliTouch system, there can be up to 40 lights that can be accessed from the Lights screen. You can also set up the Color Set, Color Swim and Color Sync special lighting features. Typically there is a minimum of three Pentair SAm, or SAL lights installed in the pool and spa in order to achieve the desired effects.

To manually switch on lights for your pool, spa and other outdoor lights:

1. From the main screen, tap the **Lights** tab.
2. **To switch individual lights on or off:** Choose the light to switch off or on, then tap the appropriate **On** or **Off** button.
3. **To switch all lights on or off:** Tap the **All Off** or **All On** button.

Schedule Screen

From the Schedule screen you can schedule when to switch on and off lights, heater, spa jets, and the filter pump. You can also schedule which heat mode to use and also change the heat set point if necessary.



Name

Options - Left/Right Arrows

Circuit: Name of the circuit to use in schedule. Use the side arrows to select the desired circuit.

Start Time: Scheduled start time. Use the side arrows to select the time when the circuit is to be switched on.

Stop Time: Scheduled stop time. Use the side arrows to select the time when the circuit is to be switched off.

Heat Command: The heat mode options are: Don't Change (default), Off, H.Pump Only, H.Pump Preferred, and Heater. If "Solar present" is selected (see page 43) the options are, Don't Change, Off, Solar Only, and Solar Preferred. Use the "Don't Change" option to use the currently selected Heat Mode option on the Main screen. Use the side arrows to select the heat mode.

Change Heat Set Point: Options are: Use Manual Setting (default), and Yes. Use the side arrows to select the options. To change the existing heat set point select "Yes" and change the new set point in "Heat Set Point" option.

Heat Set Point: This option displays if "Yes" is selected in "Change Heat Set Point." Tap either side arrow to set the new heat set point.

SmartStart: Select "Yes" to enable the option. This option displays when a SAM or SAL light circuit is selected in the Circuit option. If the SAM or SAL circuit was assigned a color changing light Circuit Function, when the light is switched on, the light will automatically begin changing colors.

Days: Select the days of the week to schedule the current circuits.

Add/Delete Program buttons

Add Program button: Use this button to display a new schedule and to access schedule options.

Delete Program button: To delete a scheduled program, select the program to delete from the list, then tap the **Delete Program** button.

Schedule Feature

Use the Schedule feature to program when you want to automatically run equipment such as pool filtration or lights. Any circuit (auxiliary, feature, or macro) can be set to switch on and off for all days of the week, or for individual days. Up to 99 programs may be created for all circuits combined.

The following describes how to schedule a daily program:

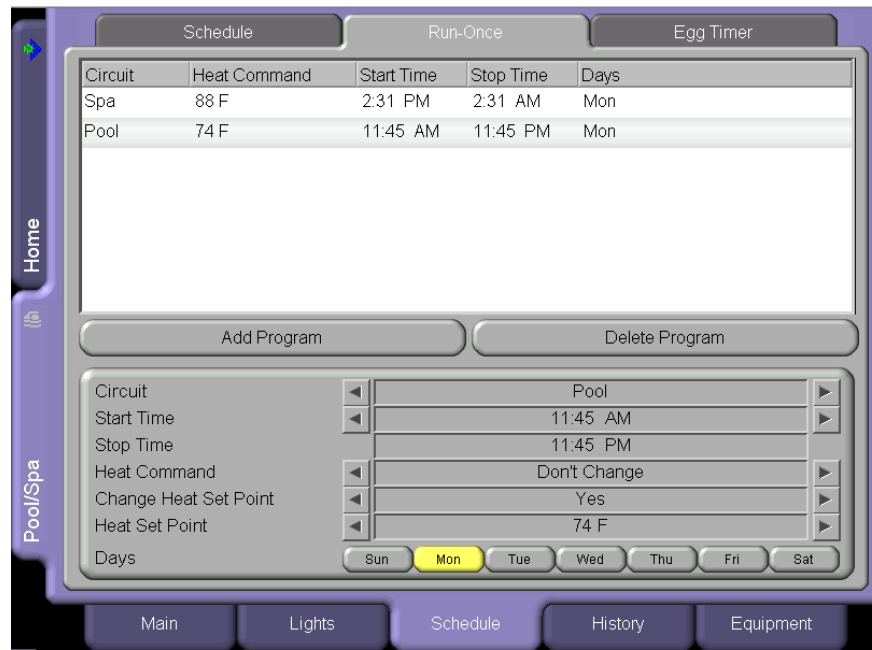
To program the daily timed circuits

1. From the main screen, tap the **Schedule** tab.
2. Tap **Add Program** to add a new schedule.
3. **Assign a circuit:** Tap either side arrow to scroll through the available circuits. Select the circuit to schedule. Pool and spa circuits are grouped in the status list.
4. **Set the start time:** Tap either side arrow to set the hour for the start time.
5. **Set the stop time:** Tap either side arrow to set the hour for the stop time.
6. **Heat Command:** Tap either side arrow to set heat mode. The options are Don't Change (default), Off, H.Pump Only, H.Pump Preferred, and Heater. If ""Solar present"" is selected (see page 43) the options are, Don't Change, Off, Solar Only, and Solar Preferred. Use the ""Don't Change"" option to use the currently selected Heat Mode option on the Main screen. Use the side arrows to select the heat mode.
7. **Change Heat Set Point:** Options are: Use Manual Setting (default), and Yes. Use the side arrows to select the options. To change the existing heat set point select "Yes" and change the new set point in "Heat Set Point" option.
8. **Heat Set Point:** This option displays if "Yes" is selected in "Change Heat Set Point." Tap either side arrow to set the new heat set point.
9. **SmartStart:** Select "Yes" to enable the option. This option displays when a *SAm* or *SAL* light circuit is selected in the Circuit option. If the *SAm* or *SAL* circuit was assigned a color changing light Circuit Function, when it is switched on in the Lights screen, the color lights will automatically begin changing colors.
10. **Days:** To set the timer to work only on certain days, tap the days of the week to run the schedule. Tap **All** to run the schedule for all the days of the week.
11. To create another schedule, tap **Add Program**.
12. **To delete a schedule:** Select the schedule to delete from the list, and tap **Delete Program**.

Note: If the Manual Operation Priority feature is enabled during a scheduled run time, the scheduled run time is reset to 12 hours (default). For more information about the General Settings option "Manual OP Priority," see page 33.

Schedule: Run Once Screen

The “Run Once” feature enables you to automatically switch equipment on for one time. For example, you can pre-program your spa to start heating every Sunday at 10 AM to 10 PM.



Name

Description

- Circuit:** Name of the circuit to use in schedule. Use the side arrows to select the desired circuit.
- Start Time:** Scheduled start time. Use the side arrows to select the time when the circuit is to be switched on.
- Stop Time:** Scheduled stop time. Use the side arrows to select the time when the circuit is to be switched off.
- Heat Command:** The heat mode options are: Don't Change (default), Off, H.Pump Only, H.Pump Preferred, and Heater. If Solar present is selected (see page 43) the options are, Don't Change, Off, Solar Only, and Solar Preferred. Use the Don't Change option to use the currently selected Heat Mode option on the Main screen. Use the side arrows to select the heat mode.
- Change Heat Set Point:** Options are: Use Manual Setting (default), and Yes. Use the side arrows to select the options. To change the existing heat set point select **Yes** and change the new set point in Heat Set Point option.
- Heat Set Point:** This option displays if Yes is selected in Change Heat Set Point. Tap the either side arrow to set the new heat set point.
- SmartStart:** Select Yes to enable the option. This option displays when a SAM or SAL light circuit is selected in the Circuit option. If the SAM or SAL circuit was assigned a color changing light Circuit Function, when it is switched on in the Lights screen, the color lights will automatically begin changing colors.
- Days:** Select the days of the week to schedule the current circuits.

Add/Delete Program Buttons

- Add Program button:** Use this button to display a new schedule and to access schedule options.
- Delete Program button:** To delete a scheduled program, select the program to delete from the list, then tap the Delete Program button.

Run-Once Timer

Use the Run-Once timer feature to program a circuit to automatically switch equipment on for one time. Unlike the Schedule regular timer, this once-only timer does not repeat. For example, you could set up the program to pre-heat your spa ready for your arrival. After the programmed Run-Once circuit is completed, it is automatically erased. The circuit must be turned off manually or wait for the 12 hour automatic shut off. However, the 12 hour factory shut off time can be changed by setting a new run time in the Egg Timer. See “Egg Timer Screen,” page 70.

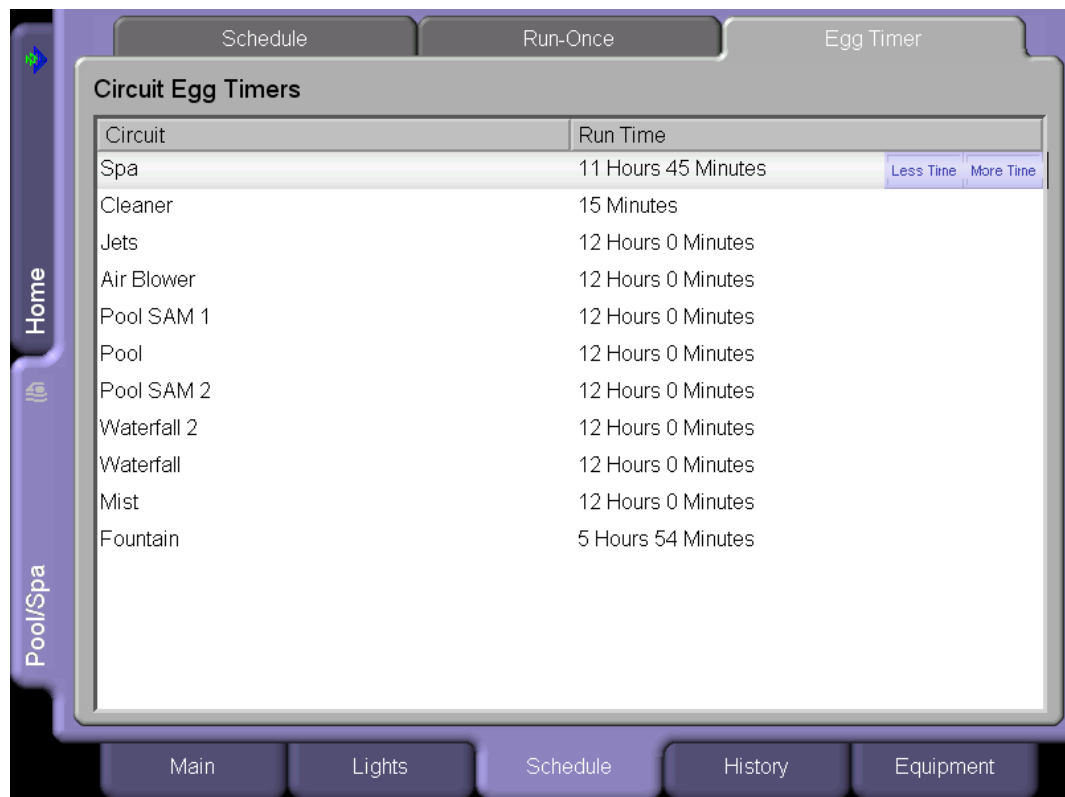
To program a Run-Once daily timed circuit:

1. From the main screen, tap the **Schedule** tab.
2. Tap the **Run-Once** tab.
3. Tap the **Add Program** button to add a new program.
4. **Assign a circuit:** Tap either side arrow to scroll through the available circuits. Select the circuit to schedule. After you have finished configuring the programs in this screen, the pool, spa, and lights circuits will be displayed in groups in the status list (i.e., all pool programs are displayed together).
5. **Set the start time:** Tap either side arrow to set the hour for the start time.
6. **Set the stop time:** Tap either side arrow to set the hour for the stop time.
7. **Heat Command:** Tap either side arrow to set the heat mode. The options are Don't Change (default), Off, H.Pump Only, H.Pump Preferred, and Heater. If Solar present is selected (see page 43) the options are, Don't Change, Off, Solar Only, and Solar Preferred. Use the Don't Change option to use the currently selected Heat Mode option on the Main screen. Use the side arrows to select the heat mode.
8. **Change Heat Set Point:** Options are: Use Manual Setting (default), and Yes. Use either side arrow to select the option. To change the existing heat set point select **Yes** and change the new set point in Heat Set Point option.
9. **Heat Set Point:** This option displays if Yes is selected in Change Heat Set Point. Tap either side arrow to set the new heat set point.
10. **SmartStart:** Select **Yes** to enable the option. This option displays when a *SAM* or *SAL* light circuit is selected in the Circuit option. If the *SAM* or *SAL* circuit was assigned a color changing light Circuit Function, when it is switched on in the Lights screen, the color lights will automatically begin changing colors.
11. **Days:** To set the timer to work on a particular day, tap the day to run the schedule.
12. To create another schedule, tap **Add Program**.
13. **To delete a program:** Select the program to delete from the list, and tap **Delete Program**.

Note: If Manual Operating Priority is enabled during a scheduled run time, the scheduled run time is reset to 12 hours (default). For more information about the General Settings option “Manual OPPriority,” see page 33.

Schedule: Egg Timer Screen

The Egg Timer feature (count down timer) allows you to define the run time for lighting, spa, spa jets, and other circuits. Equipment can be set to be on for one minute to 23 hours 45 minutes. The factory default duration time is 12 hours. Note: If a power outage occurs during a scheduled count down, the Egg Timer feature will not switch the equipment back on.



Name	Description
	Circuit: Name of the circuit to use in schedule.
	Run Time: Length of time the circuit will run when manually enabled.
Less/More time button	Increase or decrease the current run time. If you increase the time past 23 hours 45 minutes, Don't Stop is displayed. Use Don't Stop to run the circuit continuously.

Setting the Egg Timer (Count Down)

The Egg Timer count down feature allows you to define the run time for different circuits. For example, whenever you manually switch your spa on, you would like it to automatically turn off in two hours. Use the Egg Timer circuit to set an automatic shut-off time. The time period can be anywhere from 1 minute to 24 hours. The Egg Timer is also a useful feature for turning off lighting and spa jets. For example, a jet pump can be set to turn off in 15 minutes, even when turned on by the spa-side remote control. All Egg Timer circuits are factory-set to 12 hours.

To set the Egg Timer count down:

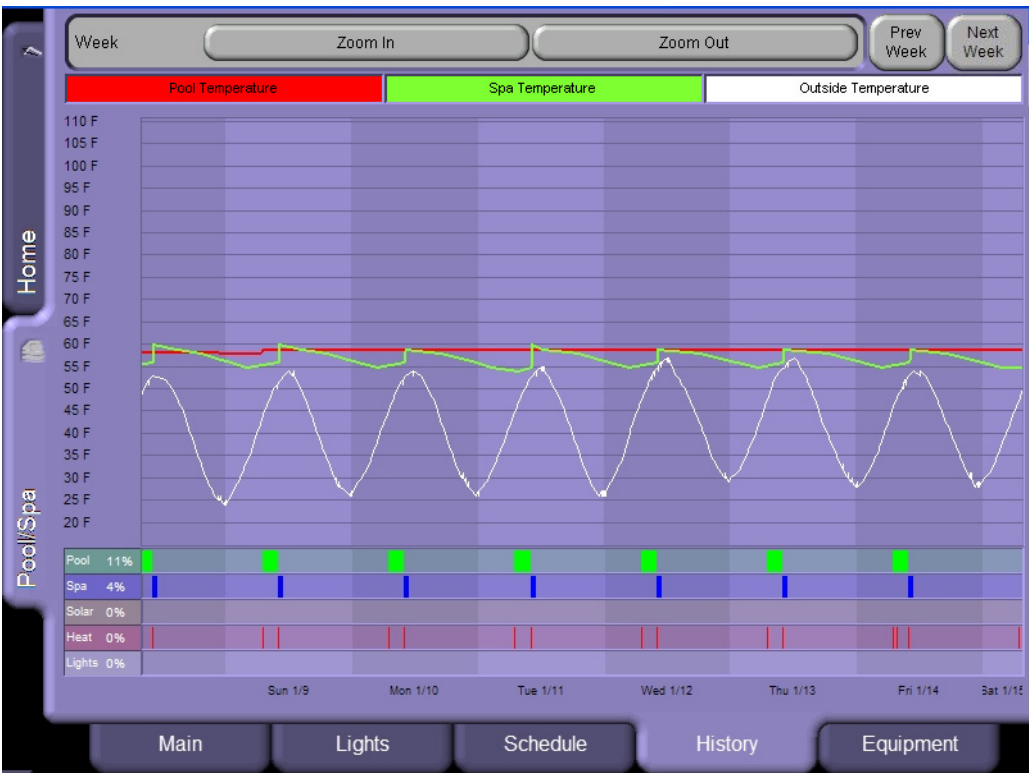
1. From the main screen, tap the **Schedule** tab.
2. Tap the **Egg Timer** tab. A list of scheduled circuits is displayed.
3. To set a new count down time for a circuit, first select the circuit from the list. Tap the **Less Time** or **More Time** to increase or decrease the run time. The scheduled Run Time displays the time that the circuit is due to run.

To set the Don't Stop feature:

1. From the main screen, tap the **Schedule** tab.
2. Tap the **Egg Timer** tab. A list of scheduled circuits is displayed.
3. Select the circuit from the list and tap **More Time** until the run time is increased pasted 23 hours 45 minutes. Don't Stop will be displayed. The selected circuit is now set to run continuously.

History Screen

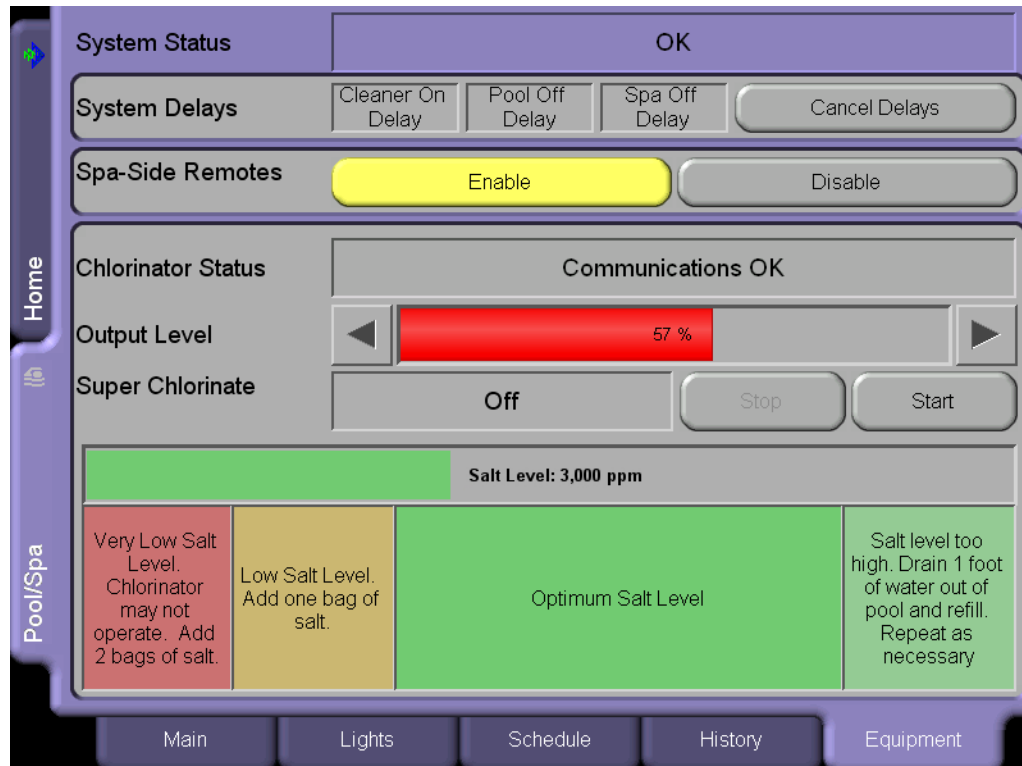
The History screen displays historical usage data for your pool, spa, heater, lights, and solar, as well as pool, spa, and air temperatures. The usage information can be useful for tracking the operation and efficiency of your system.



Name	Description
Zoom In/Zoom Out	Use the Zoom In and Zoom Out button to change the time period displayed by Month, Week, Day, or Hour. Use the Previous and Next buttons to scroll through the time display.
Pool Temperature	The red box corresponds to the displayed pool temperature graph line.
Spa Temperature	The green box corresponds to the displayed spa temperature graph line.
Outside Temperature	The white box corresponds to the displayed outside temperature graph line.
Pool/Spa/Solar/Heat/Lights	Displays the duration and actual times your equipment was operating.

Equipment Screen

Use the Equipment screen to control various system functions and view the system status.



Name	Description
System Status	Displays IntelliTouch system status informaton. If an error is detected a system message displays.
System Delays	Select Cancel Delays button for cleaner, pool or spa. See page 42 for more information.
Spa-Side Remotes	Enable/Disable iS10 or iS4 spa-side remotes.
Chlorinator Status	Describes the current chlorinator operating condition. Any error codes will appear here
Output Level	Displays the chlorination output level from 0 to 100%. Tap the left or right arrow to increase or decrease the chlorination output level.
Super Chlorinate	Tap the On or Off button to start or stop Super Chlorination. Super Chlorination default run time is 24 hours.
Salt Level	Displays how much salt (in ppm: parts per million) is in the water. The color of the status bar indicates the condition of the water. Corresponding information is dispayed under the status bar. Salt level directions are intended as gernal guidelines. Please see your chlorinator manufacturer's instructions for recommended salt levels.

System Status Messages

If a system error has occurred with IntelliTouch equipment, a message is displayed in the System Status box.

System Delay Cancel Feature

For convenience, on a one time basis, the Cancel Delays feature will cancel the following safety delays which can be set up in the IntelliTouch system. Please note there is generally not a need to cancel any of these delays except for servicing or testing the system.

When the following pumps are switch on, if Pool Off Delay is selected and the Cancel Delay button is pressed, the following describes how each pump is affected:

- **Heater Cool-Down Delay Cancel:** Shuts Filter Pump off immediately.
- **Two-Speed Filter Pump 5 minute START on HIGH SPEED Delay Cancel:** Shifts pump to low speed.
- **Automatic Pool Cleaner START Delay:** Starts Cleaner Pump immediately. Normally there is a delay in which the filter pump first runs for 5 minutes before the cleaner pump starts.
- **Automatic Pool Cleaner-SOLAR Delay:** Allows Cleaner Pump to run even though solar delay has shut it off for 5 minutes.

About the Heater Cool-down Cycle and Delay Cancel

Some heaters require a cool-down cycle before being turned off. This can be accomplished with a setup procedure in the IntelliTouch system which runs the filter pump an additional ten minutes to dissipate residual heat built up inside the heater combustion chamber. The delay feature is mainly for use by service technicians when they want to shut the filter pump off immediately, and know the heater has not been running.

IMPORTANT: Heaters manufactured by Pentair Water Pool and Spa do not require this cool-down period and do not need the delay to be set up.

To cancel a safety delay:

1. From the ScreenLogic main screen, tap the **Equipment** tab.
2. Tap the delay to cancel from the System Delays box, and tap the **Cancel Delays** button.

The delay options are:

- Cleaner On Delay
- Pool Off Delay
- Spa Off Delay

Enable/Disable Spa-Side Remotes

To disable or enable the spa-side remotes from ScreenLogic:

1. From the main ScreenLogic screen, tap the **Equipment** tab.
2. Tap the **Enable** or **Disable** button to enable or disable the iS10 or iS4 spa-side remote.

Chlorinator Status and Controls Description

To access the Chlorinator status and controls:

1. From the main ScreenLogic screen, tap the **Equipment** tab. The chlorination feature are:
 - **Chlorinator Status:** Describes the current chlorinator operating condition. Any error codes will appear here.
 - **Output Level (0 -100 %):** Displays the chlorination output level from 0 to 100%. Tap the left or right arrow to increase or decrease the chlorination output level.
 - **Super Chlorinate:** Tap the On button to start Super Chlorination for 24 hours. Tap the Off button to stop Super Chlorination. The default run time is 24 hours.
 - **Salt Level:** Displays how much salt (in ppm: parts per million) is in the water. The color of the status bar indicates the condition of the water. Corresponding information is displayed under the status bar. Also see the chlorinator manufacturer's instructions for recommended salt levels.

Blank Page

ScreenLogic

Frequently Asked Questions (FAQs) and Troubleshooting

ScreenLogic Tips and FAQs

Use the following information to resolve general ScreenLogic operation issues.

ScreenLogic Technical Support Questions

Before contacting Pentair Water Technical Support, please note that Technical Support personnel can only assist with relevant questions regarding IntelliTouch ScreenLogic hardware and software. IntelliTouch ScreenLogic can only be used with the provided ScreenLogic PDA, Tablet, and in-wall Touch Screen devices. Technical support for non-supported devices is not available. Please consult your manufacturer documentation for other questions. For Technical Support contact information, see page viii.

***Note:** If you purchased a PDA, In-wall touch screen, or Tablet, a CD-ROM is also included that contains the ScreenLogic PC interface for your Windows XP computer.*

Why does the Configuration program say “Looking for Controller”?

If the Configuration program displays “Looking for controller,” for longer than 60 seconds when you start IntelliTouch ScreenLogic, this may indicate a communication problem somewhere in the system. If ScreenLogic has been previously working without a problem, try the following steps to resolve the problem:

1. Make sure your wireless ScreenLogic device (PDA and/or Tablet) are connected to the ScreenLogic wireless router. In most cases, the easiest way to re-establish a connection is to perform a cold boot of the ScreenLogic device:
 - a. **PDA** – Use the PDA stylus to push the reset button located on the back side of the PDA. The PDA reboot process takes approximately 15 seconds. If a wireless connection does still not exist, make sure that the wireless radio has not been disabled. Press the wireless enable/disable button to enable the wireless radio. See page 8 for more information about this button.
 - b. **Wireless Tablet** – Press the Suspend button located on the left-side of the Tablet for approximately 4 seconds. The Tablet reboot process will take approximately 20 seconds.
 - c. If step 1 does not fix this issue, go to step 2.
2. Locate your ScreenLogic Protocol Adapter and wireless router. Verify that the wireless router Power LED is on. These two devices should be located near one another. Cycle the power to both of these devices. You can use a paper clip to reset the Protocol Adapter by pressing the recessed reset button. You can unplug and plug back in the wireless router to reset it.

My ScreenLogic device stopped responding to inputs or is acting strangely.

Just like your computer sometimes requires a reboot to solve a problem, your ScreenLogic interface device may also require a periodic reboot.

- a. **PDA** – Use the PDA stylus to push the reset button located on the back side of the PDA. The PDA reboot process takes approximately 15 seconds. If a wireless connection does still not exist, make sure that the wireless radio has not been disabled (refer to page 8 for the wireless enable/disable button)
- b. **In-wall Touch Screen** – Press the four-way directional round button located on the lower right of the in-wall for approximately four seconds. The In-wall reboot process will take approximately 20 seconds.
- c. **Wireless Tablet** – Press the Suspend button located on the left-side of the Tablet for approximately four seconds. The Tablet reboot process will take approximately 20 seconds.

How do I exit the ScreenLogic program while using the Tablet or In-wall Touch Screen?

Press the first button (from the left side) on the front of the Tablet or In-wall touch screen to display the virtual keyboard. Tap the **Ctrl** key, then the **Q** key to exit the ScreenLogic program.

ScreenLogic Error Messages

If a system error has occurred with the IntelliTouch equipment, a message is displayed in the System Status box.

1. From the ScreenLogic main screen, tap the **Equipment** tab.
2. The error message is displayed in the System Status box. If there are multiple errors, the error messages will be cycled in the status box located in the Equipment screen.

My Tablet or PDA wireless settings have been deleted accidentally, what do I do?

If your Tablet or PDA wireless settings are not present, a wireless connection cannot be established with the wireless router. You will need to re-enter the settings to re-connect to the wireless router.

To enter wireless settings for the Tablet:

When a wireless connection cannot be established, a red x displays over the wireless connection icon located in the lower-right corner of the Task bar.

1. Double-tap the wireless icon (computer icon) in the lower-right corner of your Task bar.
2. Tap the **Wireless Information** tab, double-click **PENTAIRx** (where x=1-9) from the list of available networks.
3. Uncheck the “The Key is provided automatically,” box.
4. Enter your WEP encryption key in the **Network key** field. The WEP encryption key is located on a label on the bottom of your wireless router.
5. Tap the **OK** button to save and exit the dialog.
6. Tap the **OK** button to close the dialog.

To enter wireless settings for the PDA:

When a wireless connection cannot be established you will see a red x displayed over the wireless connection icon located in the lower-right corner of the PDA screen.

1. Tap the wireless icon (Signal strength bars) in the lower-right corner of your screen.
2. Tap **Edit Wireless Profiles** at the bottom of your screen.
3. Tap **PENTAIRx** (where x=1-9) from the list of available networks.
4. Tap **Network Key** from the list of available networks.
5. Uncheck the “The Key is provided automatically,” box.
6. Enter your WEP encryption key in the **Network key** field. The WEP encryption key is located on the bottom of your wireless router.
7. Tap the **OK** button to save and exit the dialog. Tap the **OK** button, then the **X** to exit.

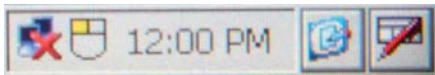
How many ScreenLogic Protocol adapters can I install in an IntelliTouch system

You can install one Protocol adapter per IntelliTouch system (one per Load Center). However, a total of four ScreenLogic interfaces can be used simultaneously with the Protocol adapter. For more information about interface accessory kits, refer to “IntelliTouch ScreenLogic Interface Accessory Kits,” page 5.

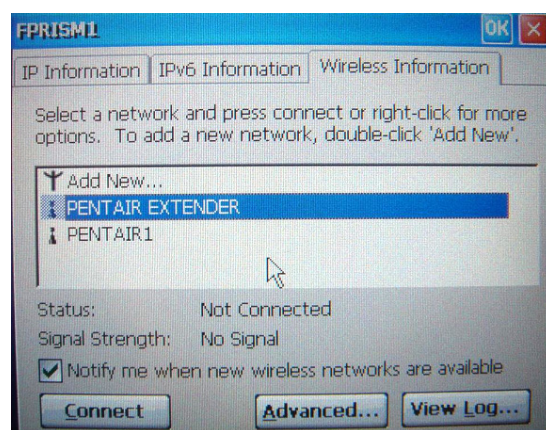
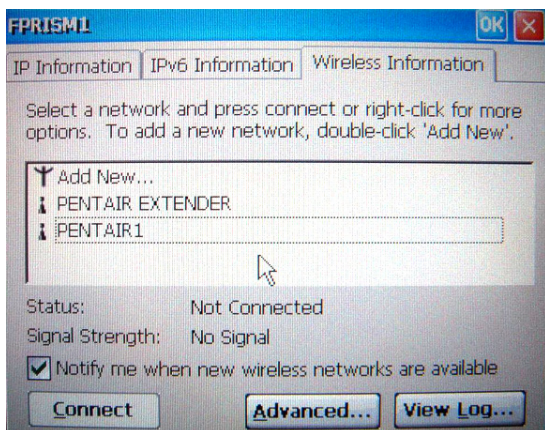
My Tablet and/or PDA lost the wireless connection to the ScreenLogic Wireless Router or Range Extender. How do I reconnect?

The Tablet and PDA are always searching for an available wireless signal within range of your wireless router and will automatically try to reconnect to the last successful wireless connection.

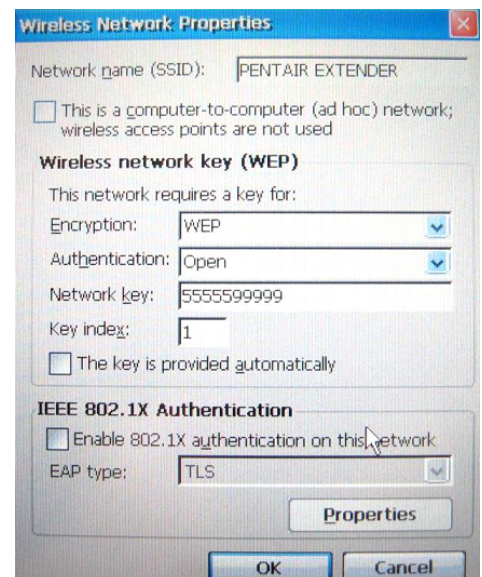
If your Tablet does not automatically connect to the ScreenLogic wireless router, a red X displays on top of the Internet connection icon in the system task tray as shown below.



- **To manually establish a connection:** Double-tap the icon with the stylus. A window will pop up showing the available wireless access points that you can connect to.
- **To connect to your ScreenLogic wireless router:** Select the network named **PENTAIRx** (where x=1 through 9).
- **To connect to your Range Extender wireless network:** Select the network called **PENTAIR EXTENDER**. Tap the **Connect** button to connect to the wireless network.



If you are connecting to the Range Extender (PENTAIR EXTENDER) for the first time, the “Wireless Network Properties” dialog shown at right will appear. Uncheck the check box titled “The key is provided automatically.” The Range Extender uses an encrypted signal by default for security. Enter in **5555599999** (10 total digits) into the Network Key field and tap the **OK** button.



PDA Tips and FAQs

Your PDA is pre-configured at that factory and is ready to use once the Protocol adapter and ScreenLogic wireless router are installed. While it is charging, you can use and configure the PDA. The charging cradle charges the battery and provides power for normal operation. When you first switch on the PDA, you will see the boot screen that is followed by the Microsoft Windows Mobile desktop.

PDA On/Off Button (Turn off Backlight)

Hold the On/Off button for two seconds to switch on/off the backlight. Refer to your Dell User's Guide for more information.

How can I calibrate the PDA screen?

You may recalibrate the cursor on the touch display when the device is powered on by either accessing **Start > Settings > Control Panel > Stylus** or by engaging the virtual keyboard button (left front set of four buttons) and the left button on the four-way navigation button on the right front face of the device, simultaneously. This is very useful when the current calibration is way off so as to affect ability to use the touch display to access the software utility.

Starting Up the Tablet

Your Tablet is pre-configured at that factory and is ready to use once the Protocol adapter and ScreenLogic wireless router installed. While it is charging, you can use and configure the Tablet. The charging cradle charges the battery and provides power for normal operation. When you first switch on the Tablet, you will see the boot screen that is followed by the Microsoft Windows CE .NET desktop which looks similar to the Microsoft Windows 98, 2000, or XP desktop. Tap **Start > Settings > Control Panel** to access Windows configuration settings.

What is the first thing I should do with the Digital Tablet or PDA?

- You need to charge the battery.
- Connect the AC adapter provided with the device directly to the power input jack on the cradle for the device with the device securely seated. Use only the AC-DC adapter provided with the device or purchased as a specific accessory, your device may not operate and may be damaged if you use the incorrect AC adapter.
- When the device battery is being charged, the battery LED near the top of the front face of the Digital Tablet will blink slowly in Green.
- When the device battery is fully charged, the battery LED will show a steady Green.

Note: While it is charging, you can use and configure the device.

Why doesn't the Digital Tablet or PDA come charged so that I can turn it on right away?

General shipping restrictions discourage manufacturers from shipping any equipment with fully charged batteries. You will need to attach the device to the AC power to charge the batteries after receiving it. Use the AC adapter provided with the device. You can still use the device while it is charging.

Do I need to load any software to get started?

The Digital Tablet, PDA, and in-wall Touch Screen comes pre-installed with all the software you will need to surf the Internet, set up e-mail, run local applications, and interact with servers and PCs. These devices provide a means to install new software that may enhance the function and value of the device. Note: Such applications are not supported by Pentair Water.

Is there anything I should NOT do with the device while I am learning to use it?

The touch screen is made of glass, and is therefore fragile. Treat it as you would a piece of glass. Please use the stylus provided with the Digital Tablet or another stylus designed for use with touch-panels. Do not use a sharp objects such as pens or other pointing devices to touch the screen, you may scratch the screen.

Do not spill liquid onto the device, especially if the device is powered on. In general, do not operate without reading all cautions and directions in this manual.

Is there anything I need to assemble before I turn it on?

The Digital Tablet and PDA comes fully assembled. You will only need to charge the battery by connecting the A/C adapter to the unit, and plugging it into a wall socket. For an enhanced handling experience, the system may come with accessories such as a protective rubber grip handles which you will have to slip over the Digital Tablet and a shoulder strap.

How do I begin to use the Digital Tablet and in-Wall Touch Screen immediately?**Powering On:**

Depending on how you received the device, your Digital Tablet or in-wall Touch Screen device may be in a Suspend state or in a Power Off state. Connect the AC adapter provided with the device directly to the power input jack of the Digital Tablet or to power input jack on the cradle for the device with the Digital Tablet securely seated. Use only the AC adapter provided with the device or purchased as a specific accessory, your device may not operate and may be damaged if you use the incorrect AC adapter.

With the AC-DC adapter connected:

- Press firmly but briefly on the Suspend button on the left edge of the device.
- Wait a few seconds, if the display does not light up, make sure that all power connections are in place and try again.
- If the display still does not light up then try the following before contacting Technical Support (see page viii).
- If you have been using the Cradle, try connecting the power directly to the device instead, and repeat the option above, OR,
- With the AC adapter still connected, push on the Suspend button located along the left edge and hold on for over 4 seconds. Release the Suspend button. Then push on the Suspend button again briefly.

If all the steps above fail to turn on the device then you should contact Technical Support (see page viii).

After the device turns on, you should charge the device battery with the AC adapter. You may continue to use the device while the charging process is proceeding.

“Connecting Please Wait” message

If the Tablet has entered a suspend state, when you switch it back on, it will take a few seconds to reconnect to the ScreenLogic wireless router. If it has trouble reconnecting, move closer to the wireless router. If the Tablet is still non-responsive, hold the Suspend button for four seconds until the Tablet reboots. Wait a few seconds, and press the Suspend button. The Tablet will restart an automatic start the ScreenLogic configuration program.

How do I make the panel brighter/darker?

Tablet: From the Control Panel (**Start > Settings > Control Panel**), tap on the Brightness icon. Choose the Brightness tab and tap on the Bright and Dark buttons to increase or decrease the brightness of the display. You may also be able to program some of the hard buttons on the device to perform this function (see **Start > Settings > Control Panel > Button Settings**).

PDA: Tap **Start > Settings > System**. Tap the Brightness icon. Tap Dimmer or Brightness to adjust the contrast. Tap **OK** to exit and save settings.

How do I switch the Tablet off?

To switch the Tablet off, briefly press the Suspend button on the left side of the unit. The screen will go dark almost immediately, and all open applications will be retained for the next time you power on. Do not hold on to the Suspend button for too long (4 seconds or more), under normal operating conditions, as this will power the unit off. You may lose valuable user data unless you have previously saved this information.

My Digital Tablet will not switch on

Verify that you had pressed the Suspend button briefly. Ensure that the Digital Tablet has power. Plug the Digital Tablet into the AC power adapter that shipped with the panel, and plug the unit into a wall outlet. Watch the battery LED to ensure that it blinks slowly in Green color to indicate charging of the battery (the LED may also glow steady Green if the battery is fully charged). Press the Suspend button on the left side of the panel. If you continue to have trouble, contact Technical Support (see page viii).

My Digital Tablet will not switch off

I changed my mind immediately after recovering from Suspend mode and wish to put the device into Suspend again. Why is it that the Suspend button appears nonresponsive?

Each time you recover from Suspend mode, it takes 10-15 seconds for the system to totally recover, although you can see the display and use the system within 1-2 seconds. During this recovery period of 10-15 seconds, the system will not be able to process any request to re-enter Suspend mode. As soon as the system has fully recovered, a single Suspend request will be processed if a single or multiple Suspend requests were made during the recovery period.

The Tablet comes with protective rubber grip handles and a shoulder strap – what do they offer and how do I use them?

The protective handles when properly secured around the device offers an enhanced handling experience with protection against bumps and knocks, up to a three-foot drop.

Use the shoulder strap hooked onto the protective jacket for hands-free portability. The jacket has four slots to allow flexibility in connection to the shoulder strap.

The Tablet comes with a desktop cradle – what are its functions?

The cradle for the Digital Tablet offers support, charging pass-through, and USB host (2) and slave (1) ports. The USB host ports provide connection for input devices, such as the keyboard and mouse when the Digital Tablet is seated securely on the cradle. The USB slave port facilitates connection to PCs for software transfer, synchronization, and installation. Pentair does not offer technical support for these features.

Note: Use both hands to insert and remove the Tablet to and from the cradle. Proper connection and integrity between the device and the cradle is important for charging and to maintain the USB pass-through connection.

Cleaning the Touch Screen

How do I wipe fingerprints off the screen without damaging it?

In general, you may use cloth dampened with a small amount of mild cleaning solution. Ensure that the device is powered off beforehand.

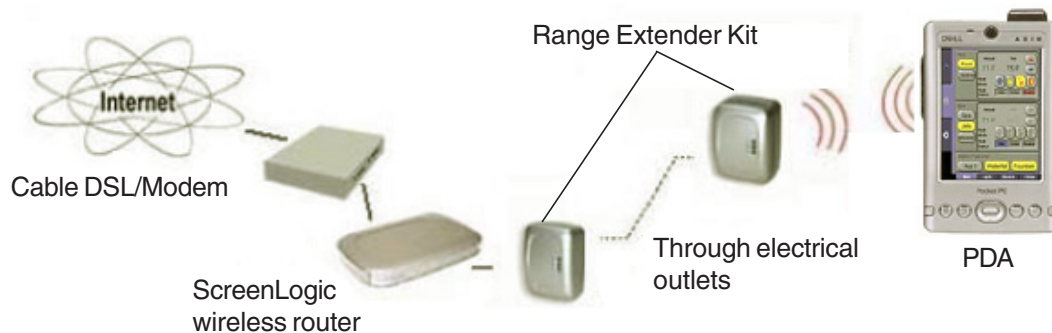
ScreenLogic

Appendix

The wireless router that came with my ScreenLogic kit does not reliably reach the area where I primarily use my Tablet and/or PDA

If it is not practical to place the ScreenLogic wireless router close to the primary operating location of your wireless Tablet or PDA, you can purchase a Range Extender kit. This kit includes two wall plugs; the Ethernet Bridge and the wireless Access Point that plug into your home's AC wall outlets. With the Range Extender kit, the wireless network can originate at any point of your choosing within your home. There are no visible wires and no desk or floor space consumed allowing it to blend into your home decor.

For example, if your wireless Tablet and/or PDA do not reliably connect to the ScreenLogic wireless router because your ScreenLogic wireless router is located in your study (upstairs in the front of your home) and you primarily use your Tablet and/or PDA in the family room (downstairs in the back of your home), the Range Extender kit will resolve your wireless connection issues. Simply plug the Ethernet Bridge range extender into an electrical wall outlet near your ScreenLogic wireless router in your study and run an Ethernet cable from this Ethernet Bridge to Port 1-4 on your ScreenLogic wireless router. Then plug the other Access Point range extender into an electrical outlet in or near your family room.



Range Extender Kit Description

The Range Extender kit is based on the HomePlug standard, an industry consortium ensuring the interoperability of Powerline devices from multiple manufacturers. The Range Extender kit uses a home's existing electrical wiring to provide a communications network for your ScreenLogic wireless Tablet and/or PDA. If your wiring is modern and up to code, there is no need to rewire outlets or to install special filters. The Range Extender wall plugs support 56-bit DES encryption.

The Range Extender kit works with 110 VAC two-prong or three-prong electrical outlets.

The Range Extender kit reliably provides coverage for considerable distances in a home as large as 5,000 square feet. Depending on the quality of your home's AC wiring, wireless coverage can be reduced due to noise in your home's electrical system. Since noise is not directly distance-dependant, you may get considerably less (or, in many cases, considerably more) coverage. In many cases, the technology works across multiple phases and circuit breakers.

Where possible, plug the devices directly into the AC electrical outlet. While inexpensive power strips and surge protectors may have little effect, more expensive and effective models may block the Range Extender's signal.

In-Wall Touch Screen Installation

The iTC35 (P/N 520502) IntelliTouch ScreenLogic In-wall Touch Screen interface comes custom configured with the IntelliTouch ScreenLogic Pool and Spa control application. The in-wall touch screen device consists of the following components:



Main unit: The electronics and Display assembly.



Snap-on front cover or bezel.



Rear metal housing. Fits into wall opening (mating screws for Main unit provided).



Side brace or bracket for rear metal housing, (mating screws to rear housing provided).

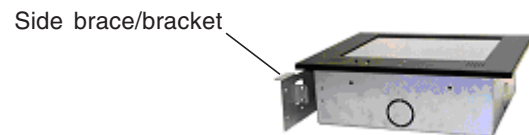
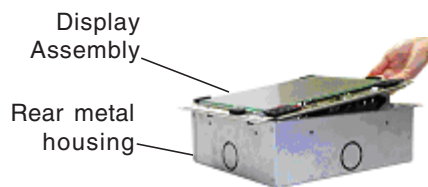
The in-wall Touch Screen device is typically shipped with the rear metal housing and the bezel detached from the display assembly. It may also be shipped with the rear metal housing secured to the display assembly. In this case, before installation, remove the display assembly from the rear metal enclosure (see illustration below).



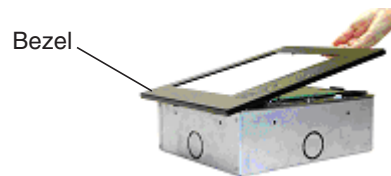
Note: Always exercise caution when handling the display assembly.

To install the in-wall Touch Screen device:

1. Ensure that no electrical power is being supplied to the device.
2. Prepare the Ethernet cable and AC power cable ready to route through the opening in the lower rear housing.
3. Remove the lower knockouts from rear metal housing.
4. Mount the rear metal housing into the wall frame opening. Secure the rear metal housing to the wall frame with the appropriate number of screws. For added stability, use the **side brace/bracket (Wing)** as an interface between the rear metal housing and the frame edge, e.g., a wall stud. Do not use the screw openings intended for securing the display assembly to the rear metal housing.
5. Route the Ethernet cable and AC power cable up through the lower opening in the rear metal housing unit.
6. Mount the display assembly into the rear metal housing. Secure the Display with the provided screws.
7. Place the bezel on top of the display and snap it into place.



8. The installation is complete.



HomeLogic Management and Control Solution

HomeLogic is the industry leader in home management and automation control systems. The HomeLogic **OneHome** system provides cost effective automation control solutions for your home including:

- Home climate thermostat control
- Home audio
- Interior home lighting
- Video surveillance
- Exterior security lighting
- Messaging, and much more

OneHome automation systems can interface with any computer in the home as well as remote access over the Internet. The system controls can be via an in-wall Touch Screen, wireless Tablets, PocketPC's, or an existing home computer.



IntelliTouch ScreenLogic users can upgrade to a complete home automation solution with the HomeLogic **OneHome** Automation system. Similarly, existing HomeLogic **OneHome** users can be fully integrated with the IntelliTouch ScreenLogic pool and spa control.

For more information about the HomeLogic **OneHome** solution, visit www.homelogic.com

Blank Page

ScreenLogic

Glossary

Glossary

+3 IntelliTouch Systems: Feature Circuits, Macro circuits, and Color Set, Color Swim lighting features are only available with IntelliTouch +3 system models. The IntelliTouch +3 system models are: i7+3 (P/N 520505), i9+3S (P/N 520508), i9+3 (P/N 520509), i10+3 (P/N 520510). For more information, refer to “IntelliTouch Personality Kits,” page 2.

802.11: Refers to a family of specifications developed by the IEEE for Wireless LAN technology. 802.11 specifies an over-the-air interface between a wireless client and a base station or between two wireless clients and provides 1 or 2 Mbps transmission in the 2.4 GHz band using either frequency hopping spread spectrum (FHSS) or direct sequence spread spectrum (DSSS).

802.11b: An extension to 802.11 that applies to Wireless LANs (WLAN) and provides 11 Mbps transmission (with a fallback to 5.5, 2 and 1 Mbps) in the 2.4 GHz band. 802.11b uses only DSSS. Throughput data rate is 5+ Mbps in the 2.4 GHz band.

802.11g: An extension to 802.11 that applies to Wireless LANs (WLAN) and provides 54 Mbps transmission (with a fallback to 1, 2, 5.5, 6, 9, 11, 12, 24, 36, and 48 Mbps) in the 2.4 GHz band. 802.11g uses Orthogonal Frequency Division Multiplexing (OFDM). Throughput data rate is 11+ Mbps in the 2.4 GHz band.

Access Point: An Access Point (AP) is stand-alone wireless hub that allows any computer that has a wireless network adapter to communicate with another computer and to connect to the Internet.

Client computer: The computer that gets its Internet connection by sharing either the host computer’s connection or the Access Point’s connection.

Expansion Kit: A kit that includes additional auxiliaries to an existing Personality Kit. Requires a Load Center for each Expansion Kit.

Feature Circuits: Programmable circuits that may control Macro circuits, relays and/or valve actuators.

Freeze Protection: A circuit with freeze protection circulates water to protect pipes from freezing, if the outdoor air temperature sensor detects the temperature is getting close to freezing (below 36° F). Refer to “Setup Circuits (Step 2 of 4)”, page 35 for more information.

Gigahertz (GHz): A unit of frequency equal to 1,000,000,000 cycles per second.

High Voltage Compartment: Large lower right compartment of Load Center for all high voltage wiring including circuit breakers, relays, and GFCI.

Host computer: The computer that is directly connected to the Internet using a modem or network adapter.

Indoor Control Panel: This 14 button remote controller with LCD (liquid crystal display) is wired to the Personality board in the Power/Load Center. The control panel can be wall mounted inside a house to control IntelliTouch Systems.

iS4: Four function Spa-Side remote. Can be spa wall or deck mounted.

iS10: Up to ten function spa-side remote with temperature changing capability. Can be spa wall or deck mounted.

Internet Protocol (IP) address: The address of a computer that is attached to a network. Part of the address designates which network the computer is on, and the other part represents the host identification.

LAN: A Local Area Network (LAN) is a high-speed, low-error data network covering a relatively small geographic area.

Glossary (continued)

Load Center: Metal enclosure with power relays, transformer, and circuit breakers. The Load Center is installed prior to Personality Kit installation. Used for distributing power for controlling IntelliTouch Systems. Also known as the “sub-panel.”

Low Voltage Compartment: Top compartment of Load Center for all low voltage wiring.

Low Voltage Raceway: Vertical space in the left side of Power/Load Center for low voltage cabling.

Megabits-per-second (Mbps): Transmission speed of 1,000,000 bits per second.

Megahertz (MHz): A unit of frequency equal to 1,000,000 cycles per second.

MobileTouch Controller: Wireless controller for the IntelliTouch Systems with all the functionality of the Indoor Control Panel.

Outdoor Control Panel: Control panel with flexible hinge installed in upper portion of Power/Load Center to control IntelliTouch systems.

Personality Board: The circuit board mounted on top of the Outdoor Control Panel motherboard. The Personality board defines the system capabilities.

Personality Kit: Set of parts to define the capability of a system; may include: Outdoor Control Panel, temperature sensors, actuators, and additional relays.

Power Center: Same as Load Center with the exception of the circuit breaker base.

Relay Circuits: The circuits that control the relays on the Personality Board. Connectors on top edge of the circuit board.

RF: Radio Frequency.

Screw Terminal Connector: Removable connector that may attach to circuit board with multiple sockets (anywhere from 2 to 12) to receive wires from controllers and sensors; wires held by screw terminals; multiple wires of a small enough gauge (usually 22 AWG) may be coupled to a single socket of a terminal connector.

SSID: Service Set Identifier. A value that controls access to a wireless network. The SSID for your wireless network card must match the SSID for any Access Point that you want to connect with. If the value does not match, you are not granted access to the network.

Transceiver: Circuit board with attached antenna that can send and receive radio frequency (wireless) transmissions.

WEP: Wired Equivalent Privacy is a 64 bit and 128 bit (64 bit is sometimes referred to as 40 bit) encryption protocol. WEP aims to provide security by encrypting data over radio waves so that it is protected as it is transmitted from one end point to another.

Wi-Fi: Wireless Fidelity is meant to be used generically when referring of any type of 802.11 network, whether 802.11b, 802.11g, 802.11a. A seal of approval from the Wireless Ethernet Compatibility Alliance (WECA).

WLAN: Wireless Local Area Network is a type of local-area network that uses high-frequency radio waves rather than wires to communicate between nodes.

Notes

