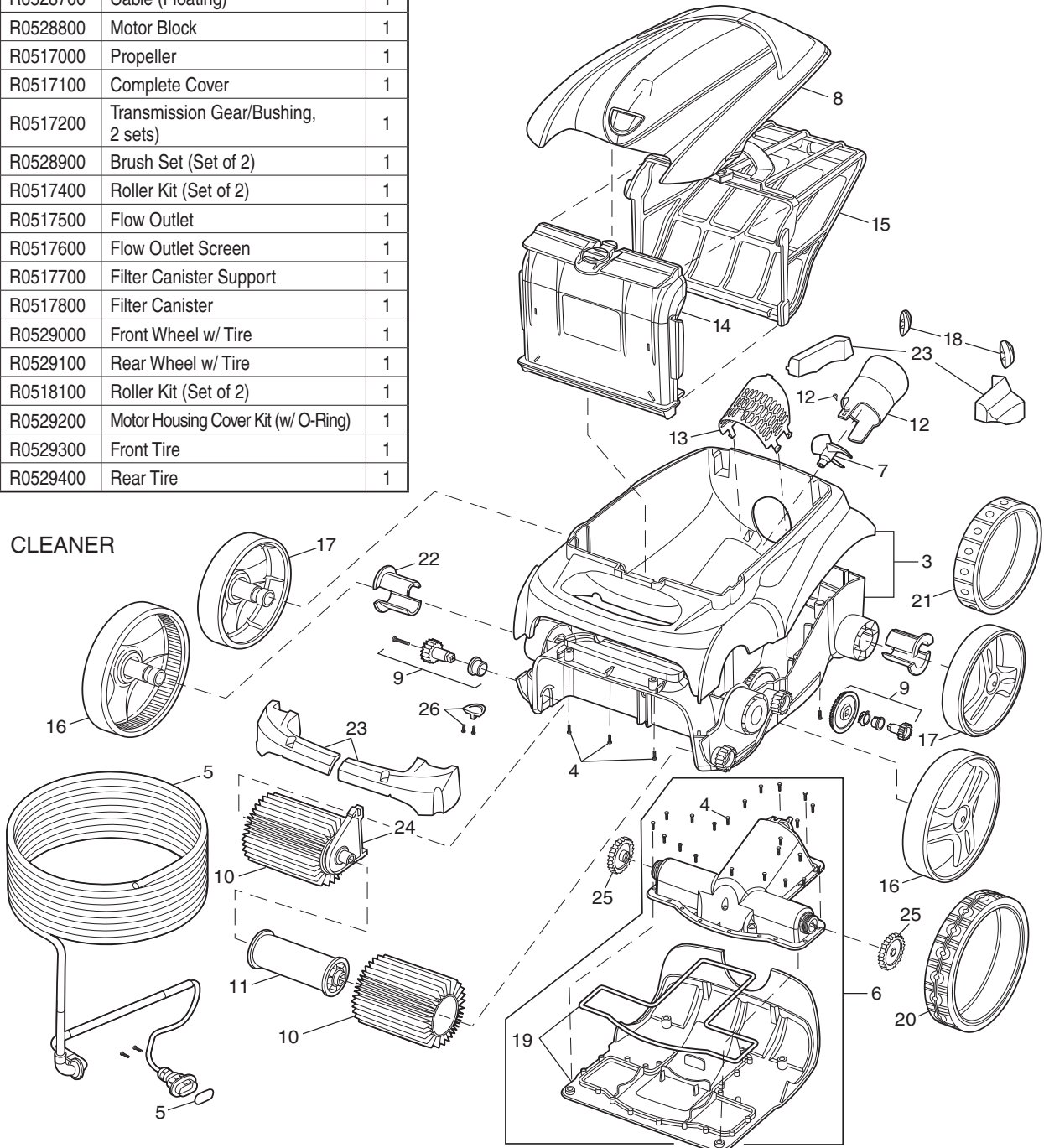


Polaris 9300xi Sport Robotic

Part# F9300xi

Key No.	Part No.	Description	Qty.
CLEANER			
1A	R0516200	Caddy	1
2A	R0528600	Control Unit Complete	1
3	R0516600	Main Housing (Top & Bottom)	1
4	R0516700	Motor Block Screw Kit	22
5	R0528700	Cable (Floating)	1
6	R0528800	Motor Block	1
7	R0517000	Propeller	1
8	R0517100	Complete Cover	1
9	R0517200	Transmission Gear/Bushing, 2 sets)	1
10	R0528900	Brush Set (Set of 2)	1
11	R0517400	Roller Kit (Set of 2)	1
12	R0517500	Flow Outlet	1
13	R0517600	Flow Outlet Screen	1
14	R0517700	Filter Canister Support	1
15	R0517800	Filter Canister	1
16	R0529000	Front Wheel w/ Tire	1
17	R0529100	Rear Wheel w/ Tire	1
18	R0518100	Roller Kit (Set of 2)	1
19	R0529200	Motor Housing Cover Kit (w/ O-Ring)	1
20	R0529300	Front Tire	1
21	R0529400	Rear Tire	1

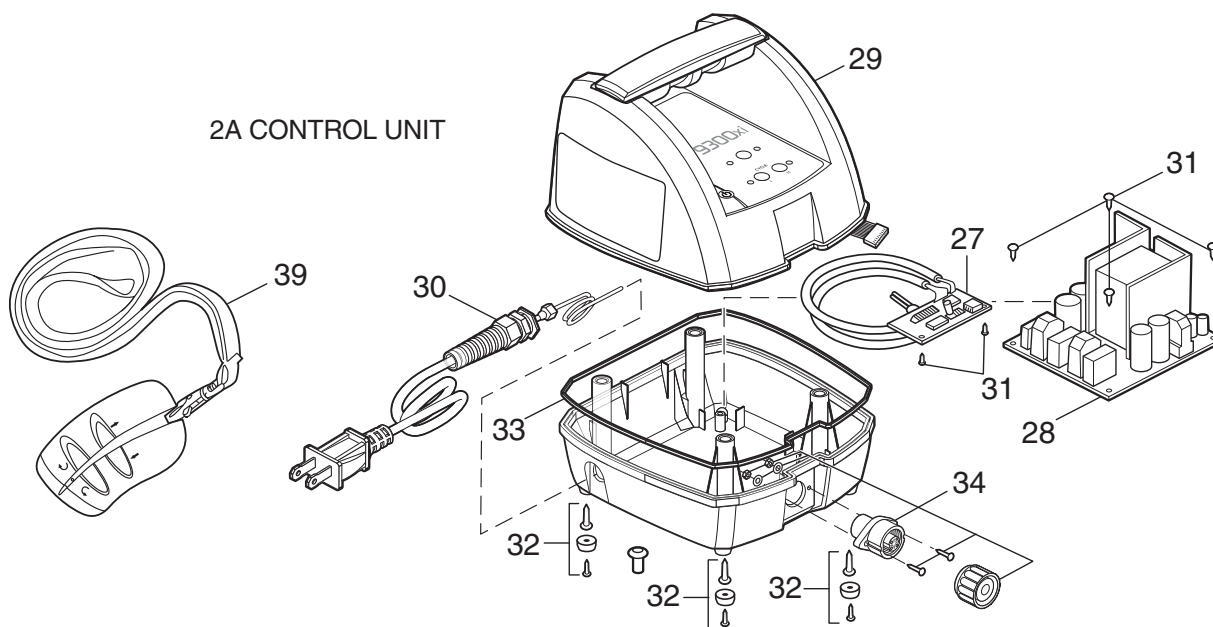
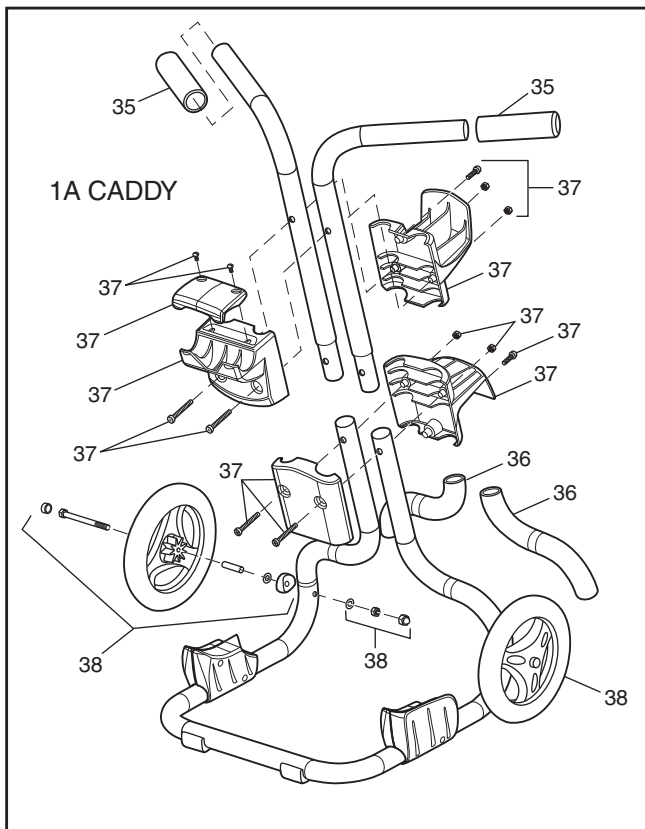
Key No.	Part No.	Description	Qty.
22	R0518500	Wheel Bushing (1 set for 1 wheel)	1
23	R0518600	Float Kit	1
24	R0518700	Brush Separator	1
25	R0518800	Drive Gear Kit	2
26	R0519000	Ramp Kit	1



Polaris 9300xi Sport Robotic

Part# F9300xi

Key No.	Part No.	Description	Qty.
CONTROL UNIT			
27	R0528400	Keyboard PCB Kit	1
28	R0506600	Control Unit PCB Kit	1
29	R0528500	Top Housing	1
30	R0506800	Control Unit Cord Kit	1
31	R0507000	PCB Screw Kit	6
32	R0507100	Control Unit Housing Screw	8
33	R0507200	Control Unit Gasket	1
34	R0506800	Power Cord Kit	1
CADDY			
35	R0507300	Caddy Handle Grip Kit	1
36	R0516100	Caddy Shoulder Grip Kit	1
37	R0518900	Control Unit Mounting Bracket Kit	1
38	R0507500	Wheel Kit Caddy	1
REMOTE CONTROL			
39	R0529600	Remote Control Kit	1

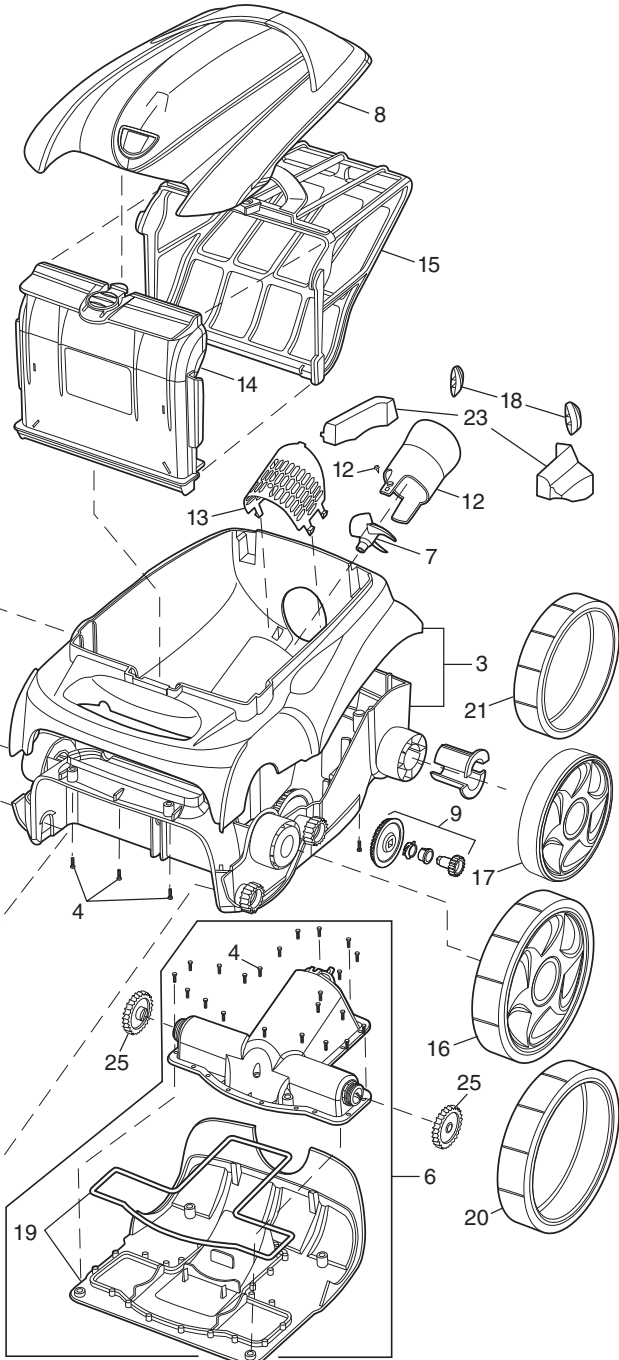


Polaris 9300 Sport Robotic

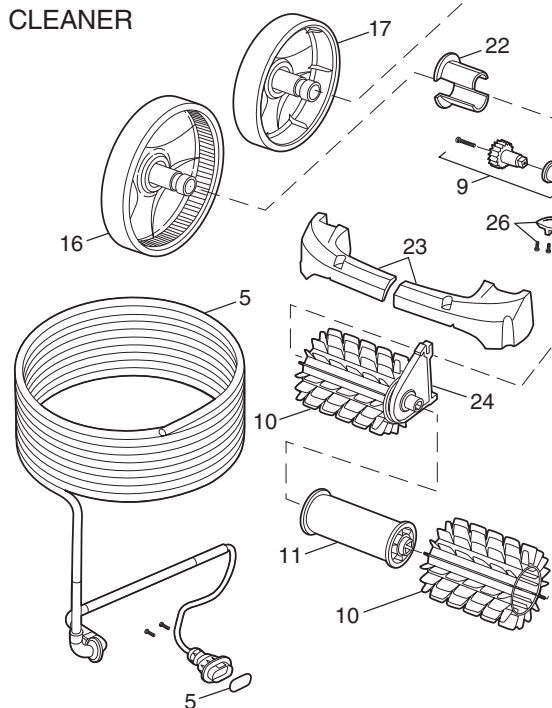
Part# F9300

Key No.	Part No.	Description	Qty.	List Price
CLEANER				
1A	R0516200	Caddy	1	\$178.62
2A	R0516500	Control Unit Complete	1	\$392.15
3	R0516600	Main Housing (Top & Bottom)	1	\$161.13
4	R0516700	Motor Block Screw Kit	22	\$6.00
5	R0516800	Cable (Floating)	1	\$199.45
6	R0516900	Motor Block	1	\$459.54
7	R0517000	Propeller	1	\$5.58
8	R0517100	Complete Cover	1	\$68.08
9	R0517200	Transmission Gear/Bushing, 2 sets)	1	\$41.67
10	R0517300	Brush Set (Set of 2)	1	\$21.89
11	R0517400	Roller Kit (Set of 2)	1	\$27.40
12	R0517500	Flow Outlet	1	\$10.08
13	R0517600	Flow Outlet Screen	1	\$5.46
14	R0517700	Filter Canister Support	1	\$31.32
15	R0517800	Filter Canister	1	\$48.90
16	R0517900	Front Wheel w/ Tire	1	\$43.43
17	R0518000	Rear Wheel w/ Tire	1	\$32.57
18	R0518100	Roller Kit (Set of 2)	1	\$10.72
19	R0518200	Motor Housing Cover Kit (w/ O-Ring)	1	\$34.15
20	R0518300	Front Tire	1	\$25.60
21	R0518400	Rear Tire	1	\$23.66

Key No.	Part No.	Description	Qty.	List Price
22	R0518500	Wheel Bushing (1 set for 1 wheel)	1	\$6.44
23	R0518600	Float Kit	1	\$8.27
24	R0518700	Brush Separator	1	\$5.75
25	R0518800	Drive Gear Kit	2	\$7.62
26	R0519000	Ramp Kit	1	\$5.09



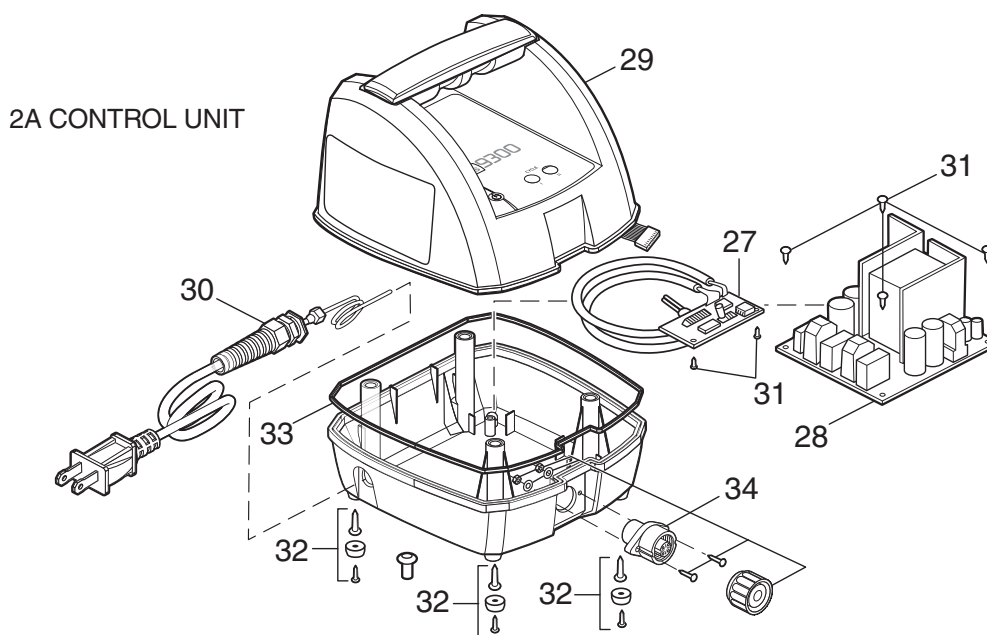
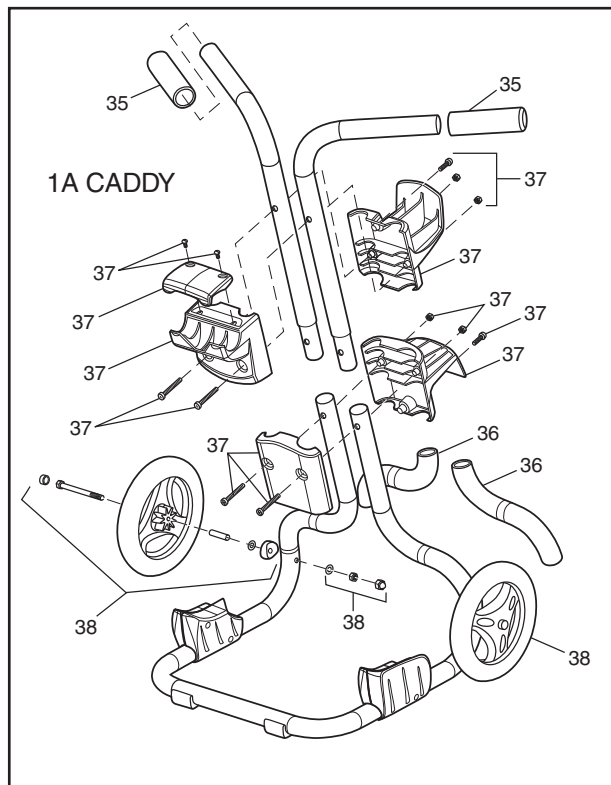
CLEANER



Polaris 9300 Sport Robotic

Part# F9300

Key No.	Part No.	Description	Qty.	List Price
CONTROL UNIT				
27	R0516300	Keyboard PCB Kit	1	\$73.45
28	R0506600	Control Unit PCB Kit	1	\$177.07
29	R0516400	Top Housing	1	\$61.30
30	R0506800	Control Unit Cord Kit	1	\$77.15
31	R0507000	PCB Screw Kit	6	\$3.90
32	R0507100	Control Unit Housing Screw	8	\$3.90
33	R0507200	Control Unit Gasket	1	\$5.20
34	R0519100	Power Cord Kit	1	\$29.11
CADDY				
35	R0507300	Caddy Handle Grip Kit	1	\$11.18
36	R0516100	Caddy Shoulder Grip Kit	1	\$9.73
37	R0518900	Control Unit Mounting Bracket Kit	1	\$47.32
38	R0507500	Wheel Kit Caddy	1	\$40.20



Polaris 480 PRO

Part# F4

Key No.	Part No.	Description	Qty.	List Price
1	48-057	SuperBag (Double)*	1	\$50.52
2	48-133	Disposable Bag, 3 per pack*	1	\$26.22
3	48-130	Bag Clip Assembly	2	\$13.74
4	48-047	License Plate w/ Logo	1	\$9.53
5	C40	Screw, 10-32 x 3/8" SS Pan Head	23	\$1.80
6	48-003	Upper Housing/Handle Assy	1	\$88.30
7	48-141	O-Ring, Feed Hose Connector	1	\$2.33
8	9-100-5107	E-clip, Stainless Steel	3	\$0.50
9	48-020	Gearbox Assy	1	\$121.51
10	48-004	Vacuum Tube/Feedpipe w/ two (2) O-Rings	1	\$33.54
11	48-016	O-Ring, WMS Upper to Feedpipe	1	\$2.41
12	48-033	Hubcap	3	\$1.48
13	48-032	Wide Trax® Tire*	3	\$23.76
14	48-036	Wheel Lock Screw	3	\$7.94
15	48-034	Bushing	7	\$7.94
16	48-031	Wheel	3	\$28.50
17	48-006	Chain Kit	1	\$85.44
18	48-035	Wheel Sprocket Kit	3	\$20.60
19	48-060	Axle Block, Wheel	3	\$22.15
20	48-050	Idler Tensioner Assy	1	\$38.01
21	48-045	Screw, 10-32 x 3/8" SS Pan Head w/ Star Washer	8	\$1.05
22	9-100-3105	Sweep Hose Scrubber*	4	\$2.33
23	B25	Orifice Tip w/ Orifice Tip Guard	1	\$2.52
24	B10	Sweep Hose Wear Ring*	8	\$1.86
25	B5	Sweep Hose Complete*	1	\$28.45
26	48-019	Nut, Sweep Hose	1	\$3.41

Key No.	Part No.	Description	Qty.	List Price
27	48-002	Lower Housing	1	\$55.73
28	48-010	WMS Assy w/ one (1) O-Ring	1	\$25.32
29	48-008	Vacuum Plate Assy	1	\$19.01
30	10-112-00	UWF® Restrictor Disk, Red & Blue	2	\$2.52
31	10-108-00	UWF Restrictor Kit	1	\$7.45
32	6-500-00	UWF	1	\$3.60
33	6-505-00	O-Ring, UWF	1	\$1.62
34	9-100-9002	Pressure Relief Valve	1	\$8.66
35	D29	Quick Disconnect, UWF	1	\$7.47
36	9-100-9001	UWF Connector Assy	1	\$27.54
37	D15	Nut, Feed Hose	10	\$3.34
38	D44	Adapter Hose, 8½"	1	\$5.89
39	48-080	In-line Filter Assy	1	\$48.96
40	48-222	Screen, In-line Filter	2	\$9.08
41	D10	Float, Feed Hose	11	\$5.83
42	D20	Swivel Ball Bearing	2	\$11.51
43	D45	Feed Hose, 10'	2	\$25.77
44	D50	Leader Hose, 10'	1	\$39.83
45	G52	Back-up Valve Kit	1	\$74.96
46	G53	Mechanism for G52	1	\$55.37
47	48-136	Bag Clasp	1	\$15.30
48	48-140	Feed Hose Connector Assy	1	\$15.28
49	48-070	Feed Hose Assy	1	\$179.90
N/S	48-001	Frame (Exchange only)	1	\$82.22

*Suggested stocking item

N/S-Not Shown

NOTE: Black Max™ parts are not indicated on exploded parts diagrams or parts list. Refer to Black Max Parts List on pages 279–280.

480 TankTrax® Conversion Kit

Part# 48-038

Description	Qty.
480 Track Vacuum Plate	1
Track Tire Roller	2
480 Track Tire	1
10-32 X 3/8" Pph M/S 18-8	3
Long Chain - Track Tire - 57 Link	1
420 Chain Tensioner	1
Instructions 480 Tank Trax Kit	1

480 Trax Tune-Up Kit

Part #48-211

No.	Part No.	Qty.
1	48-135	1
7	48-141	1
16	48-031	1
19	48-060	3
22	9-100-3105	2
47	48-136	1
N/S	48-037	1
N/S	48-012	1
N/S	48-039	2
N/S	S69-1	1
N/S	TL-1158	1

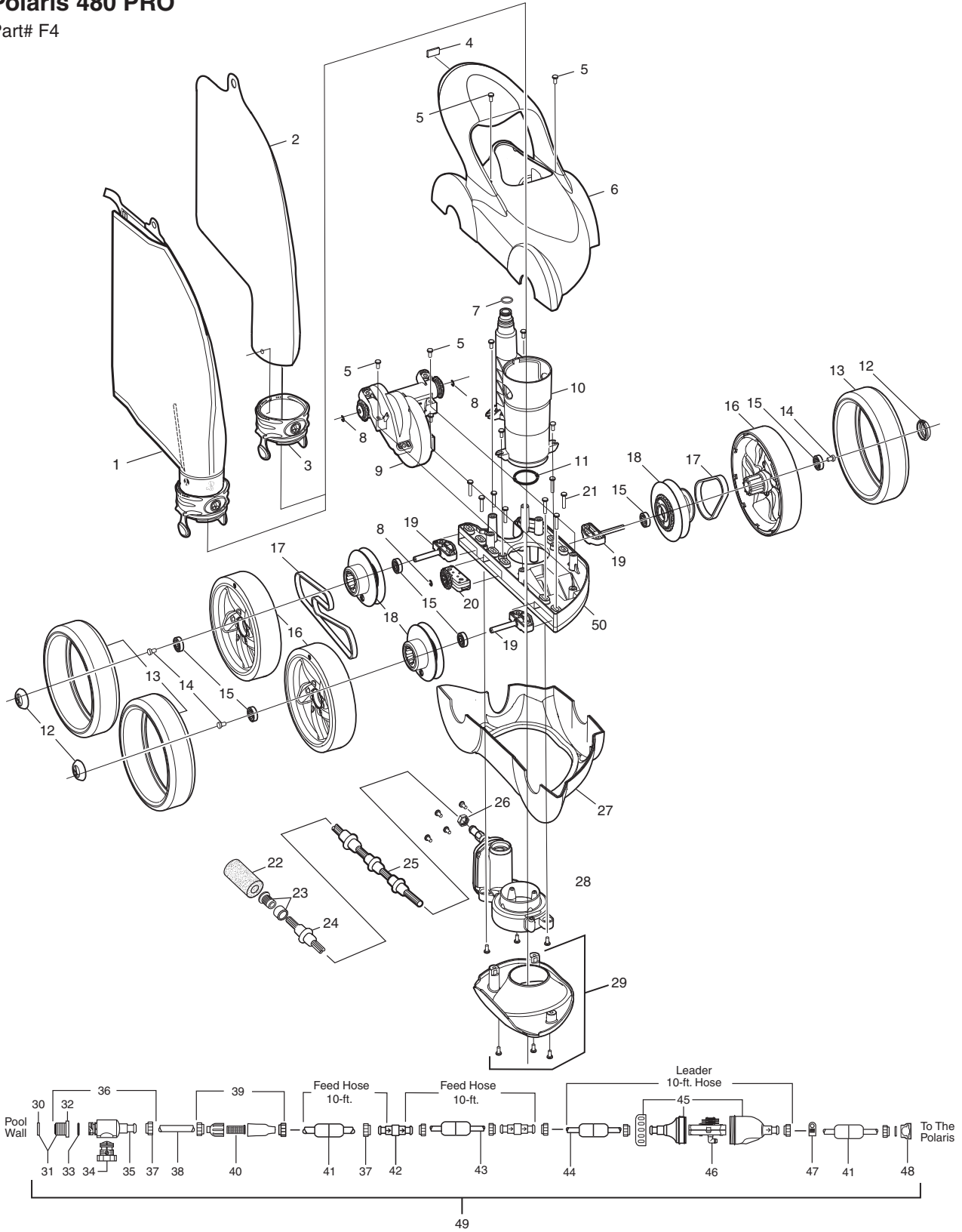
480 Tune-Up Kit

Part #48-210

No.	Part No.	Qty.
1	48-135	1
3	48-130	1
7	48-141	1
12	48-033	3
13	48-032	3
14	48-036	3
15	48-034	6
16	48-031	3
18	48-035	3
19	48-060	3
20	48-050	1
22	9-100-3105	1
47	48-136	1

Polaris 480 PRO

Part# F4



Polaris 3900 Sport

Part# F6

Key No.	Part No.	Description	Qty.	List Price
1	39-310	3900 Sport SuperBag*	1	\$41.76
2	39-003	Top Housing Assembly	1	\$62.06
3	C40	Screw, 10-32 x 3/8" SS Pan Head	16	\$1.80
4	39-006	Vacuum Tube/Feedpipe Assy w/ O-Ring	1	\$21.81
5	39-008	Hubcap	3	\$3.42
6	48-232	Wide Trax® Tire, Black*	3	\$25.19
7	48-036	Wheel Lock Screw	3	\$7.94
8	39-410	Double-Side Wheel w/ Bearing	2	\$33.22
9	39-126	Chain*	1	\$61.79
10	39-420	Wheel Sprocket Assy w/ Bearing	2	\$12.76
11	39-602	Wheel Spacer	2	DISCONTINUED
12	**N/S	Frame (Warranty Only)	1	N/A
13	39-111	Bumper	1	\$2.10
14	39-120	Chain Tensioner Kit	1	\$21.54
15	39-430	Rear Axle Block Assy	1	\$7.03
16	39-440	Front Axle Block Assy	1	\$6.87
17	48-045	Screw, 10-32 x 7/8" SS Pan Head w/ Star Washer	4	\$1.05
18	39-200	Gearbox Assy	1	\$173.42
19	39-300	WMS Assy w/ O-Ring	1	\$27.03
20	39-005	Rear Housing	1	\$9.42
21	39-004	Bottom Housing	1	\$30.76
22	39-401	Single-Side Wheel	1	\$33.73
23	48-219	Nut, Sweep Hose	1	\$3.30

Key No.	Part No.	Description	Qty.	List Price
24	39-021	Sweep Hose Wear Ring, Blue*	8	\$3.08
25	B25	Orifice Tip w/ Orifice Tip Guard	1	\$2.52
26	9-100-3105	Sweep Hose Scrubber*	1	\$2.33
27	39-500	Sweep Hose Complete*	1	\$48.76
28	10-112-00	UWF® Restrictor Disk, Red & Blue	2	\$2.52
29	10-108-00	UWF	1	\$7.45
30	6-500-00	UWF Restrictor Kit	1	\$3.60
31	6-505-00	O-Ring, UWF	1	\$1.62
32	9-100-9002	Pressure Relief Valve, Black	1	\$8.66
33	D29	Quick Disconnect, UWF	1	\$7.47
34	D15	Nut, Feed Hose, Gray	10	\$3.34
35	9-100-9001	UWF Connector Assy	1	\$27.54
36	D44	Adapter Hose, 8 1/2"	1	\$5.89
37	48-080	In-line Filter Assy	1	\$48.96
38	48-222	Screen, In-line Filter	1	\$9.08
39	D10	Float, Feed Hose, Gray	9	\$5.83
40	D20	Swivel Ball Bearing, Gray	3	\$11.51
41	D45	Feed Hose, 10', Gray	2	\$25.77
42	D50	Leader Hose, 10', Gray	1	\$39.83
43	G52	Back-up Valve Kit	1	\$74.96
44	G53	Mechanism for G52	1	\$55.37
45	48-140	Feed Hose Connector Assy	1	\$15.28
46	G5	Feed Hose Assy Complete	1	\$171.40

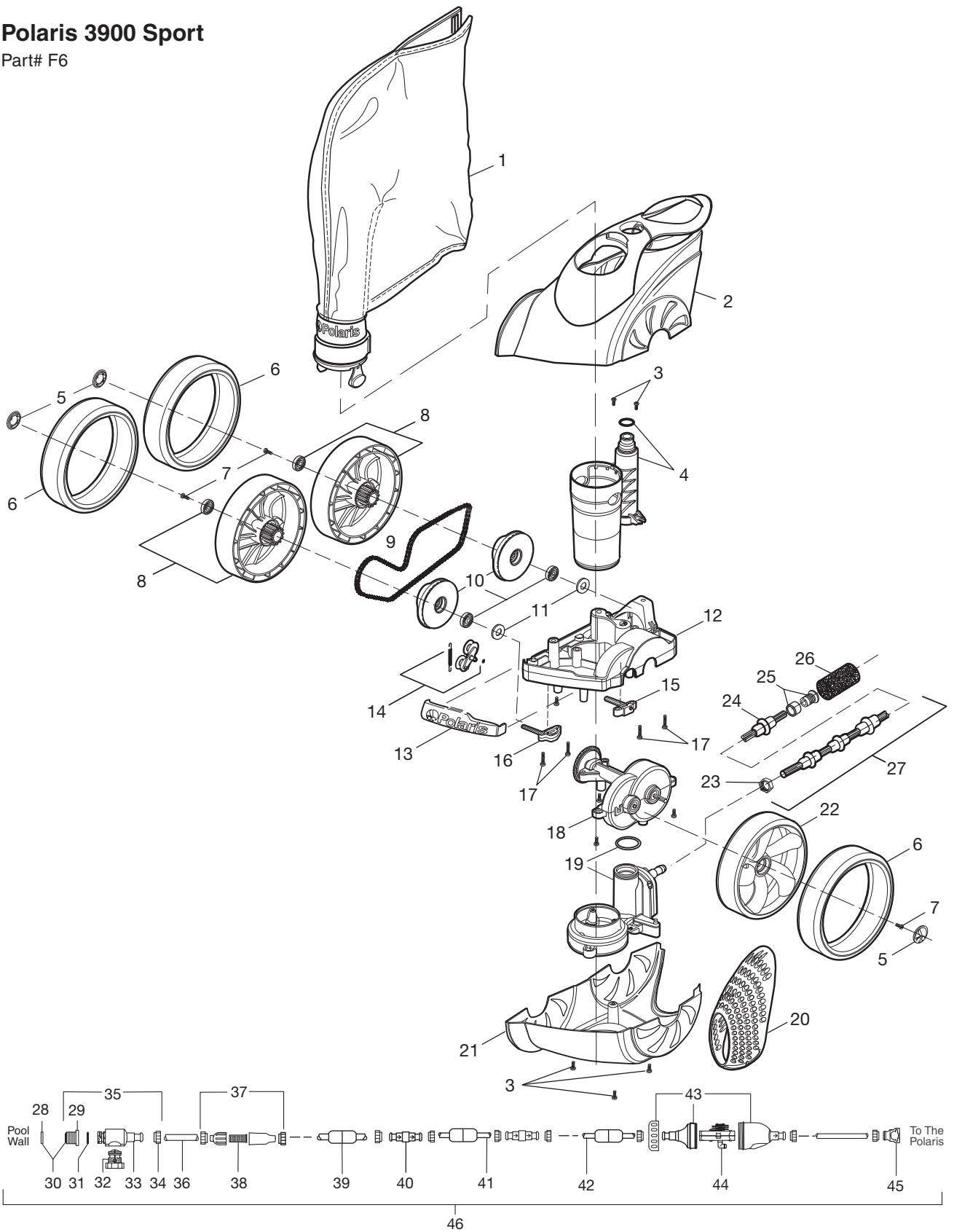
*Suggested stocking item.

N/A-Not Available

N/S-Not Shown

Polaris 3900 Sport

Part# F6



Polaris Vac-Sweep® 380

Part# F3

Key No.	Part No.	Description	Qty.	List Price
1	9-100-1021*	Zippered All-Purpose Bag	1	\$38.70
2	9-100-1152	Housing, Turbine Upper	1	\$3.92
3	9-100-1114*	Hub Cap	3	\$0.70
4	9-100-5107	E-Clip, Stainless Steel	10	\$0.50
5	9-100-1108	Ball Bearing	8	\$7.70
6	C10*	Tire, Max Trax®	3	\$9.09
7	9-100-1008*	Wheel, Double-Side	2	\$11.53
8	9-100-1017*	Belt Kit, Small and Large	1	\$27.29
9	9-100-7011	Shield, Bearing	3	\$1.60
10	9-100-1005	Frame (Warranty Only)	1	N/A
11	9-100-5125	Screw, 8-32 x 1/2" SS Pan Head	11	\$2.70
12	9-100-1139	Axle Block Kit (front and rear)	1	\$18.09
13	9-100-1010	Belt Divider, Transfer Pulley	1	\$2.52
14	B25	Orifice Tip w/ Tip Guard	1	\$2.52
15	9-100-1007*	Trans Pulley/Drive Shaft Assy	1	\$17.52
16	9-100-5115	Screw, 8-32 x 3/4" SS	4	\$1.88
17	9-100-5130	Lock Washer, Axle Block	4	\$0.31
18	9-100-1132	Drive Train Gear Kit w/ Turbine Bearing	1	\$16.02
19	9-100-1103	Turbine Wheel w/ Bearing	1	\$10.85
20	9-100-1116*	Wheel, Single-Side	1	\$8.44
21	C131	Thrust Jet Kit	1	\$5.31
22	9-100-7008	Sweep Hose Barb Complete	1	\$4.09
23	B20	Adjustment Screw, Sweep Hose	1	\$2.47
24	B15*	Sweep Hose Attachment Clamp	1	\$1.85
25	9-100-9004	Base Weight	1	\$8.71
26	9-100-7170	Hose Clamp for WMS	6	\$1.60
27	9-100-7009	Jet Retainer	2	\$1.49
28	9-100-7010	Water Management System (WMS)	1	\$29.02
29	9-100-1155	Housing, Turbine Lower	1	\$3.92
30	9-100-3105	Sweep Hose Scrubber	1	\$2.33
31	9-100-5132*	O-Ring, Feed Pipe Assy	1	\$1.57
32	9-100-7030	Top and Base Assy	1	\$69.91
33	9-100-7003	Feed Pipe/Timer Blank Assy	1	\$11.60
34	A20*	Float, Head	1	\$5.66
35	B5*	Sweep Hose Complete	1	\$28.45
36	B10	Wear Rings	8	\$1.86
37	9-100-1018	Bag Collar	1	\$2.04
38	9-100-1240	Top Housing	1	\$29.02
39	9-100-7026	Base Assy	1	\$44.40
40	10-112-00	UWF® Restrictor Discs, Red and Blue	2	\$2.52
41	6-500-00	Universal Wall Fitting (UWF)	1	\$3.60
42	9-100-9001	UWF Connector Assy	1	\$27.54
43	10-108-00	UWF Restrictor Kit	1	\$7.45
44	6-505-00	O-Ring, UWF/QD	1	\$1.62
45	9-100-9002	Pressure Relief Valve, Black	1	\$8.66

Key No.	Part No.	Description	Qty.	List Price
46	D29	Quick Disconnect, UWF	1	\$7.47
47	D15	Nut, Feed Hose	10	\$3.34
48	D44	Adapter Hose, 8 1/2"	1	\$5.89
49	48-080	In-Line Filter Assy	1	\$48.96
50	48-222	Screen, In-Line Filter	1	\$9.08
51	D10	Float, Feed Hose	9	\$5.83
52	D45	Feed Hose, 10'	2	\$25.77
53	D20	Swivel, Ball Bearing	2	\$11.51
54	D50	Feed Hose, Leader, 10'	1	\$39.83
55	G52	Back-up Valve Kit	1	\$74.96
56	G54	Case Kit for G52	1	\$22.29
57	G57	Collar, Back-up Valve	1	\$3.79
58	G53	Mechanism for G52	1	\$55.37
59	9-100-7045	Water Management Base Assy Complete	1	\$66.55

*Suggested stocking part. N/A-Not Available

380 Rebuild Kit

Part# 9-100-9030

No.	Part No.	Qty.
1	9-100-1014*	1
2	9-100-1152	1
3	9-100-1114*	3
4	9-100-5107*	10
5	9-100-1108*	8
6	C10*	3
7	9-100-1008*	2
8	9-100-1017*	1
9	9-100-7011	3
12	9-100-1139	2
15	9-100-1007*	1
18	9-100-1132	1
20	9-100-1116*	1
21	C131	1
22	9-100-7008	1
23	B20	1
24	B15*	1
25	9-100-9004	1
27	9-100-7009	2
28	9-100-7010	1
29	9-100-1155	1
32	9-100-7030	1
33	9-100-7003	1
34	A20*	1
35	B5*	1
55	G52	1

380/360 Tune-Up Kit

Part# 9-100-9010

No.	Part No.	Qty.
1	9-100-1014*	1
2	9-100-1152	1
3	9-100-1114*	3
4	9-100-5107*	10
5	9-100-1108*	8
6	C10*	3
7	9-100-1008*	2
8	9-100-1017*	1
9	9-100-7011	3
12	9-100-1139	2
15	9-100-1007*	1
18	9-100-1132	1
20	9-100-1116*	1
26	9-100-7170	6
30	9-100-3105*	1
31	9-100-5132*	2

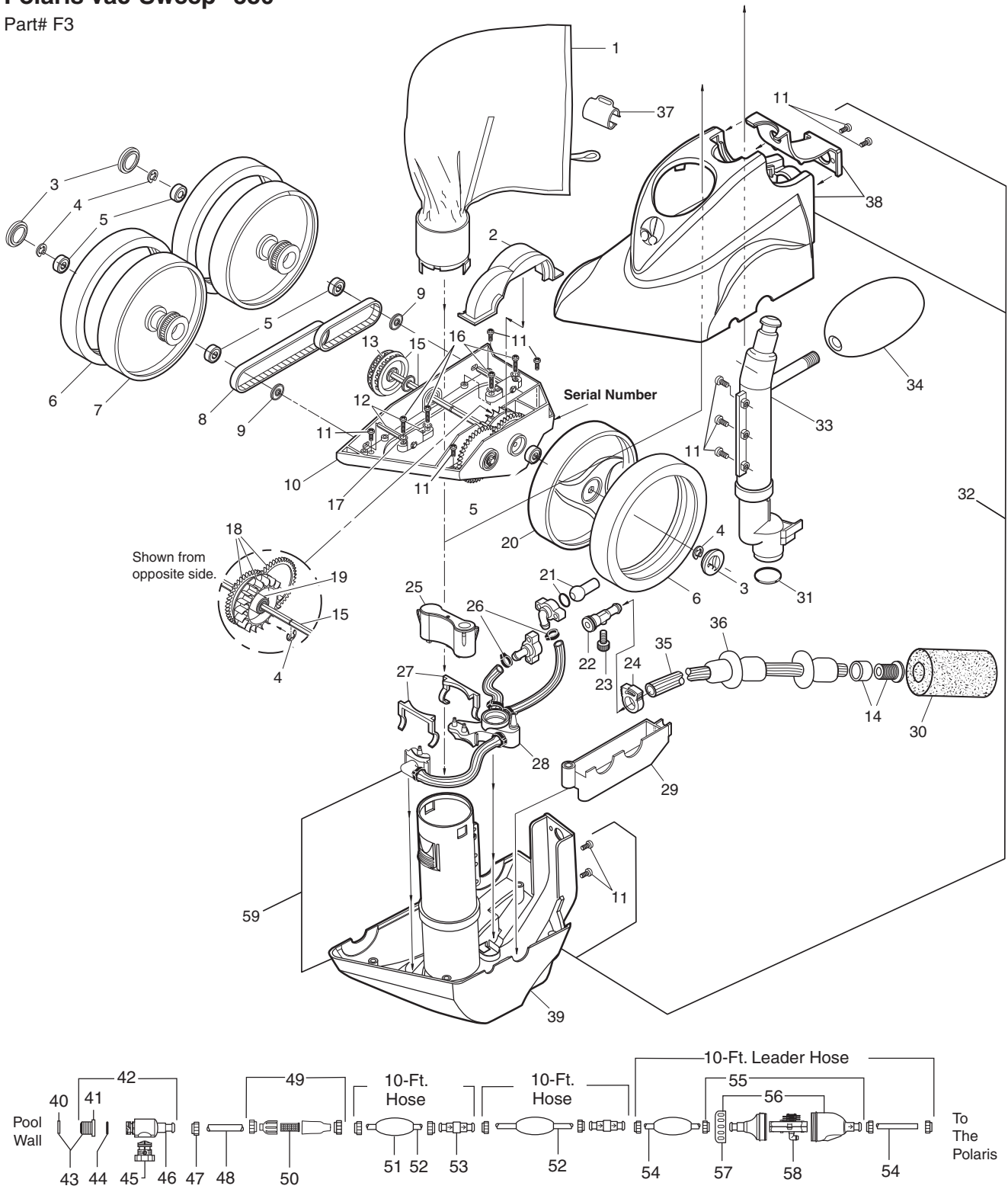
NOTE: Black Max™ parts are not indicated on exploded parts diagrams. See Black Max Parts List on pages 279-280.



PosiTrax® Tire (part# C13) available as an accessory for fiberglass and tile pools.

Polaris Vac-Sweep® 380

Part# F3



Polaris 380

Polaris Parts

Polaris Vac-Sweep® 360

Part# F1

Key No.	Part No.	Description	Qty.	List Price
1	9-100-1014*	All-Purpose Bag	1	\$34.60
2	9-100-1152	Housing, Turbine Upper	1	\$3.92
3	9-100-1114*	Hub Cap	3	\$0.70
4	9-100-5107*	E-Clip, Stainless Steel	10	\$0.50
5	9-100-1108*	Ball Bearing	8	\$7.70
6	C10*	Tire, Max Trax®	3	\$9.09
7	9-100-1008*	Wheel, Double-Side	2	\$11.53
8	9-100-1017*	Belt Kit, Small and Large	1	\$27.29
9	9-100-7011	Shield, Bearing	3	\$1.60
10	9-100-1005	Frame (Warranty Only)	1	N/A
11	9-100-5125	Screw, 8-32 x 1/2" SS	11	\$2.70
12	9-100-1139	Axle Block Kit (Front and Rear)	1	\$18.09
13	9-100-1010	Belt Divider, Transfer Pulley	1	\$2.52
14	9-100-3135	Collar, Bag Tie	1	\$3.03
15	9-100-1007*	Transfer/Drive Shaft	1	\$17.52
16	9-100-5115	Screw, 8-32 x 3/4" SS	4	\$1.88
17	9-100-5130	Lock Washer, Axle Block	4	\$0.31
18	9-100-1132	Drive Train Gear Kit	1	\$16.02
19	9-100-1103	Turbine Wheel w/ Bearing	1	\$10.85
20	9-100-1116*	Wheel, Single-Side	1	\$8.44
21	C131	Thrust Jet Kit	1	\$5.31
22	9-100-7008	Sweep Hose Barb Complete	1	\$4.09
23	B20	Adjustment Screw, Sweep Hose	1	\$2.47
24	B15*	Sweep Hose Attachment Clamp	1	\$1.85
25	9-100-3005	Base Weight	1	\$5.79
26	9-100-7170	Hose Clamp for WMS	6	\$1.60
27	9-100-7009	Jet Retainer	2	\$1.49
28	9-100-7014	Water Management System (WMS)	1	\$23.98
29	9-100-1155	Housing, Turbine Lower	1	\$3.92
30	9-100-3105*	Sweep Hose Scrubber	1	\$2.33
31	9-100-5132	O-Ring, Feed Pipe Assy	1	\$1.57
32	9-100-7030	Top and Base Assy	1	\$69.91
33	9-100-1002	Feed Pipe/Timer Blank Assy	1	\$20.32
34	A20*	Float, Head	1	\$5.66
35	9-100-1011*	Sweep Hose Complete	1	\$25.38
36	B10*	Wear Rings	7	\$1.86
37	9-100-7026	Base Assy	1	\$44.40
38	9-100-1240	Top Housing	1	\$29.02
39	9-100-3008	UWF® Connector Assy	1	\$25.59
40	6-500-00	Universal Wall Fitting (UWF)	1	\$3.60
41	6-504-00	Filter Screen, UWF/QD	1	\$7.00
42	6-505-00	O-Ring, UWF/QD	1	\$1.62
43	9-100-3009	Pressure Relief Valve, White	1	\$8.66
44	9-100-3006	Quick Disconnect, UWF	1	\$7.49
45	9-100-3109*	Hose Nut	12	\$3.27

Key No.	Part No.	Description	Qty.	List Price
46	9-100-3102	Feed Hose, 6'	4	\$16.25
47	9-100-3002*	Swivel, Hose	4	\$14.10
48	9-100-1206	Float, Feed Hose	3	\$3.52
49	9-100-1200*	In-Line Back-up Valve	1	\$75.86
50	9-100-1202	Case Kit, Back-up Valve	1	\$22.31
51	9-100-1213	Collar, Back-up Valve	1	\$3.37
52	9-100-1204	Mechanism, Back-up Valve	1	\$55.39
53	9-100-3103	Feed Hose, 1'	1	\$3.17
54		Pressure Tester	1	N/A
55	9-100-7046	Water Management Base Assy Complete	1	\$66.55

*Suggested stocking parts.

N/A-Not Available for purchase

360 Rebuild Kit

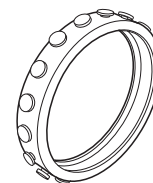
Part# 9-100-9060

No.	Part No.	Qty.
1	9-100-1014*	1
2	9-100-1152	1
3	9-100-1114*	3
4	9-100-5107*	10
5	9-100-1108*	8
6	C10*	3
7	9-100-1008*	2
8	9-100-1017*	1
9	9-100-7011	3
12	9-100-1139	2
14	9-100-3135	1
15	9-100-1007*	1
18	9-100-1132	1
20	9-100-1116*	1
21	C131	1
22	9-100-7008	1
23	B20	1
24	B15*	1
25	9-100-3005	1
27	9-100-7009	2
28	9-100-7 4	1
29	9-100-1155	1
32	9-100-7030	1
33	9-100-1002	1
34	A20*	1
35	9-100-1011*	1
45	9-100-3109*	4
47	9-100-3002*	1
48	9-100-1206	3
49	9-100-1200*	1

360/380 Tune-Up Kit

Part# 9-100-9010

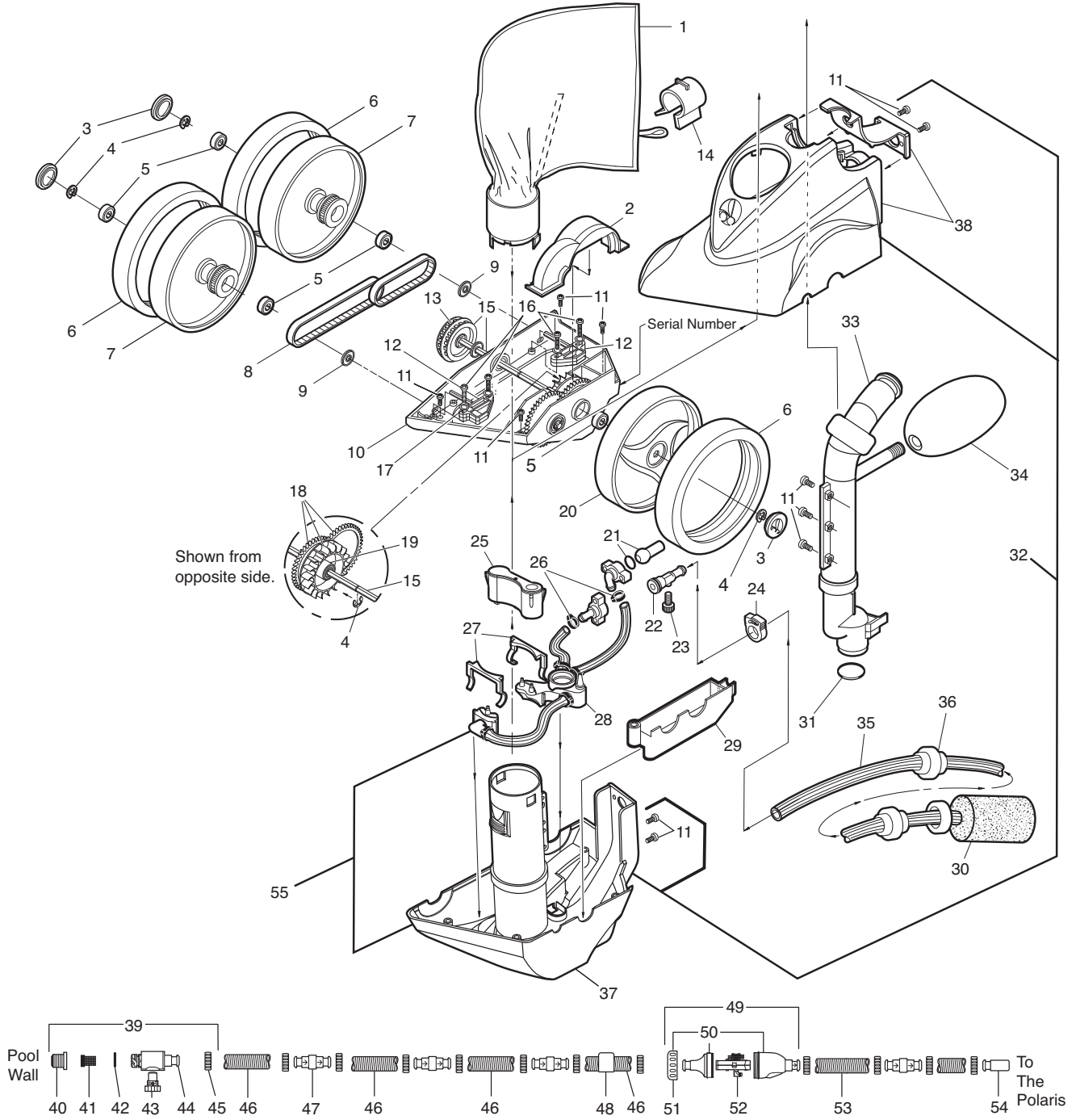
No.	Part No.	Qty.
1	9-100-1014*	1
2	9-100-1152	1
3	9-100-1114*	3
4	9-100-5107*	10
5	9-100-1108*	8
6	C10*	3
7	9-100-1008*	2
8	9-100-1017*	1
9	9-100-7011	3
12	9-100-1139	2
15	9-100-1007*	1
18	9-100-1132	1
20	9-100-1116*	1
26	9-100-7170	6
30	9-100-3105*	1
31	9-100-5132*	2



PosiTrax® Tire (part #C13) available as an accessory for fiberglass and tile pools.

NOTE: Black Max™ parts are not indicated on exploded parts diagrams. See Black Max Parts List on pages 279-280.

Polaris Vac-Sweep® 360 Part #F1



Polaris ATV® Parts List

Part# F7

Key No.	Part No.	Description	Qty.	List Price
1	5-2025	Propeller Grid, ATV	1	\$9.01
2	9-100-5117	Screw, 8-32 x 3/8" SS Pan Head	12	\$1.98
3	5-2020	Top Housing, ATV	1	\$62.29
4	5-6000	Propeller	1	\$5.83
5	5-4030*	Hub Cap ATV	3	\$0.80
6	9-100-5107*	E-Clip, Stainless Steel	7	\$0.50
7	9-100-1108*	Ball Bearing	6	\$7.70
8	5-4025*	Tire, Max Trax®, ATV	3	\$14.49
9	5-4020	Wheel Assy, ATV	3	\$14.92
10	5-5200*	Belt Kit, Small and Large	1	\$33.02
11	9-100-7011	Shield, Bearing	3	\$1.60
12	5-1020	Pulley/Retainer Clip	1	\$5.52
13	5-4500	Axle Block Assy	3	\$7.45
14	5-1010	Belt Tensioner Block	1	\$6.64
15	9-100-5130	Lock Washer, Axle Block	8	\$0.31
16	9-100-5115	Screw, 8-32 x 3/4" SS Pan Head	8	\$1.88
17	5-1000	Frame (Warranty Only)	1	N/A
18	5-2010	Flotation, Top, Front and Rear	1	\$15.41
19	5-5000*	Power Module Assy	1	\$166.93
20	5-5060	Swivel Assy	1	\$12.21
21	5-2050	Bottom Housing	1	\$30.05
22	5-3000*	Bottom Plate	1	\$13.86
23	5-7100	Universal Adapter	1	\$7.64
24	5-7000	Flow Regulator	1	\$29.02
25	5-7250	Elbow, 45-Degree	1	\$3.33
26	5-7200	Elbow, 90-Degree	1	\$3.33
27	5-5570	Single, Standard Hose	12	\$25.24
28	5-7300	Hose Weight	2	\$6.16
29	5-5580	Leader Hose	1	\$26.12
30	5-7050	Flow Indicator	1	\$7.49
N/S	5-5040	Reverse Drive Mechanism Kit, ATV, 340	2	\$19.63
N/S	5-5050	Power Module Gear Kit	1	\$30.44

*Suggested stocking parts.

N/S-Not Shown

N/A-Not Available for purchase

ATV Rebuild Kit

Part# 5-9420

No.	Part No.	Qty.
3	5-2020	1
4	5-6000	1
5	5-4030*	3
6	9-100-5107*	7
7	9-100-1108*	6
8	5-4025*	3
9	5-4020	3
10	5-5200*	1
12	5-1020	1
13	5-4500	3
14	5-1010	1
18	5-2010	1
19	5-5000*	1
20	5-5060	1
21	5-2050	1
22	5-3000*	1
28	5-7300	2

NOTE: Black Max™ parts are not indicated on exploded parts diagrams or parts list.



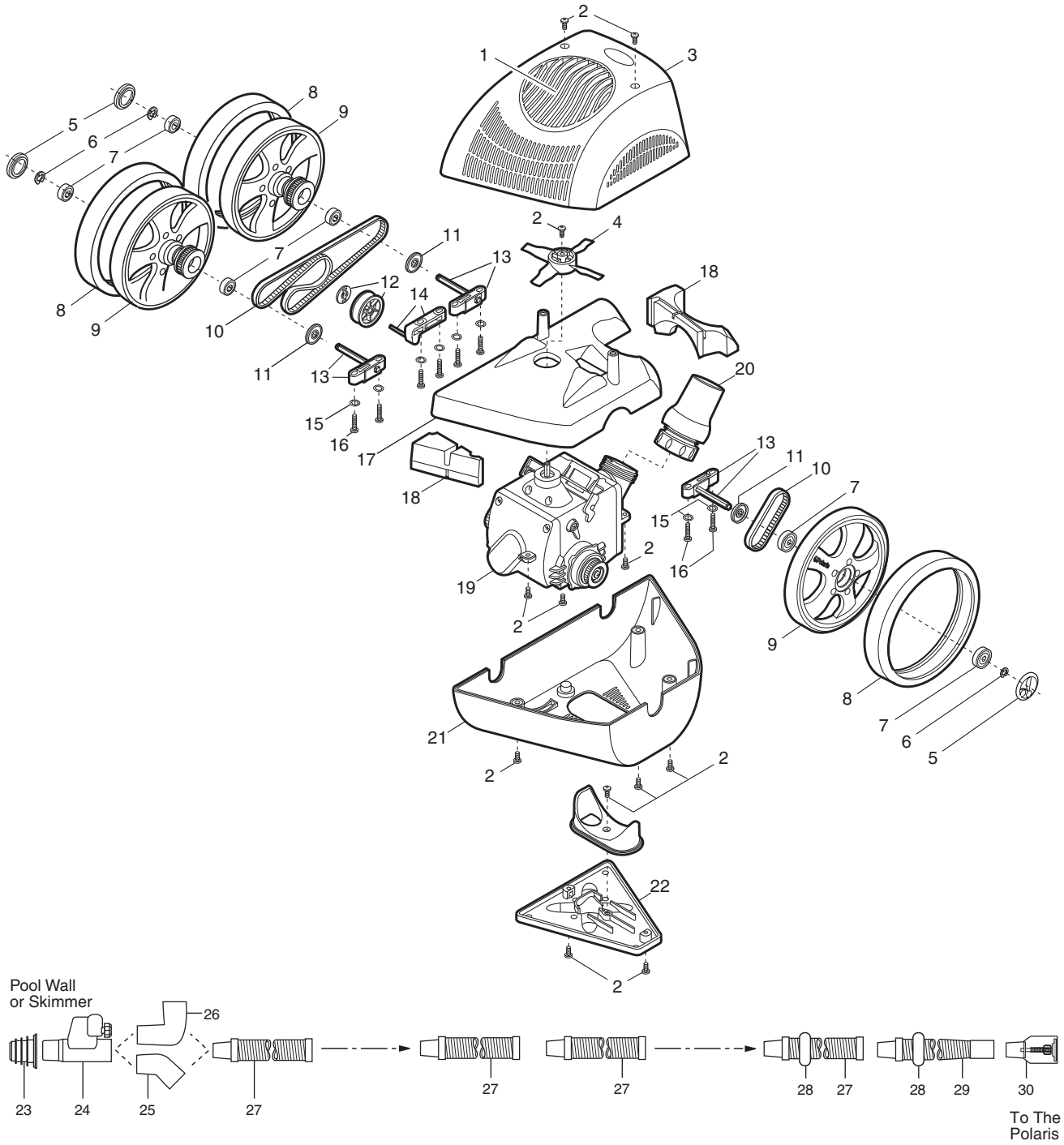
ATV Tune-Up Kit

Part# 5-9450

No.	Part No.	Qty.
5	5-4030*	3
6	9-100-5107*	7
7	9-100-1108*	6
8	5-4025*	3
9	5-4020	3
10	5-5200*	1
13	5-4500	3
20	5-5060	1

Polaris ATV® Parts Diagram

Part #F7



Polaris Vac-Sweep® 280

Part# F5

Key No.	Part No.	Description	Qty.	List Price
1	K13	All-Purpose Zippered Bag	1	\$40.05
2	C40	Screw, 10-32 x 3/8" SS Pan	20	\$1.80
3	K5	Top	1	\$45.46
4	A20	Float, Head	1	\$5.66
5	9-100-3105	Sweep Hose Scrubber	1	\$2.33
6	B25	Orifice Tip w/ Orifice Tip Guard	1	\$2.52
7	B5	Sweep Hose Complete	1	\$28.45
8	B10	Wear Rings	8	\$1.86
9	B15	Sweep Hose Attach Clamp	1	\$1.85
10	B20	Adjust. Screw, Sweep Hose	1	\$2.47
11	K30	Feed Pipe w/ Elbow	1	\$20.91
12	K20	Vacuum Tube	1	\$15.95
13	C66	Axle, Large (w/ Sand/Gravel Guard)	2	\$7.66
14	C76	Screw, 10-32 x 7/8" SS Pan	10	\$2.04
15	C45	Lock Washer for C36	7	\$1.71
16	C70	Axle Plate for C65/C66	3	\$2.33
17	C60	Ball Bearings, Wheels	8	\$8.08
18	C55	Wheel Screw, Plastic	4	\$1.50
19	C64	Wheel Washer, Plastic	4	\$2.26
20	C10	Tire, Max Trax®	3	\$9.09
21	C6	Wheel, Large (No Bearings Incl.)	3	\$11.34
22	C65	Axle, Large (Rear Wheel Only)	1	\$3.81
23	C131	Thrust Jet Kit	1	\$5.31
24	C16	Idler Wheel, Small	1	\$7.82
25	C30	Screw, 4-40 x 3/16" SS Pan	1	\$2.04
26	C32	Screw, 6-32 x 1/2" SS Pan Head	1	\$2.04
27	C25	Spring for C36	1	\$2.12
28	C36	Swing Axle Kit	1	\$11.95
29	K10	Base w/ Bracket	1	\$37.83
30	K25	Water Management System	1	\$17.26
31	K145	Frame (Warranty Only)	1	N/A
32	C80	Ball Bearings, Turbine	2	\$14.57
33	C83	Turbine Shaft Tubes	1	\$2.04
34	9-100-7170	Hose Clamp for WMS	2	\$1.60
35	A40	Turbine Shaft Shield	1	\$6.77
36	C86	Drive Shaft Assy	1	\$27.40
37	C120	Hose for C110, 7 1/2"	1	\$1.27
38	C110	Turbine Cover w/ Elbow	1	\$10.10
39	9-100-1018	Bag Collar	1	\$2.04
40	10-112-00	Restrictor Disks, Red and Blue	2	\$2.52
41	6-500-00	Universal Wall Fitting (UWF)®	1	\$3.60

Key No.	Part No.	Description	Qty.	List Price
42	9-100-9001	UWF Connector Assy	1	\$27.54
43	10-108-00	UWF Restrictor Kit	1	\$7.45
44	6-505-00	O-Ring, UWF/QD	1	\$1.62
45	9-100-9002	Pressure Relief Valve, Black	1	\$8.66
46	D29	Quick Disconnect, UWF	1	\$7.47
47	D15	Nut, Feed Hose	10	\$3.34
48	D44	Adapter Hose, 8 1/2"	1	\$5.89
49	48-080	In-Line Filter Assy	1	\$48.96
50	48-222	Screen, In-Line Filter	1	\$9.08
51	D10	Float, Feed Hose	9	\$5.83
52	D45	Feed Hose, 10'	2	\$25.77
53	D20	Swivel, Ball Bearing	2	\$11.51
54	D50	Feed Hose, Leader, 10'	1	\$39.83
55	G52	Back-Up Valve Kit	1	\$74.96
56	G54	Case Kit for G52	1	\$22.29
57	G57	Collar, Back-Up Valve	1	\$3.79
58	G53	Mechanism for G52	1	\$55.37

*Suggested stocking parts.
N/A-Not Available for purchase

280 Rebuild Kit

Part# A48

No.	Part No.	Qty.
1	K16*	1
3	K5	1
4	A20*	1
7	B5*	1
9	B15*	1
13	C66	2
17	C60*	8
18	C55*	4
19	C64*	4
20	C10*	3
21	C6*	3
22	C65	1
23	C131	1
24	C16*	1
28	C36	1
29	K10	1
32	C80*	2
33	C83	1
36	C86*	1

280/180 Tune-Up Kit

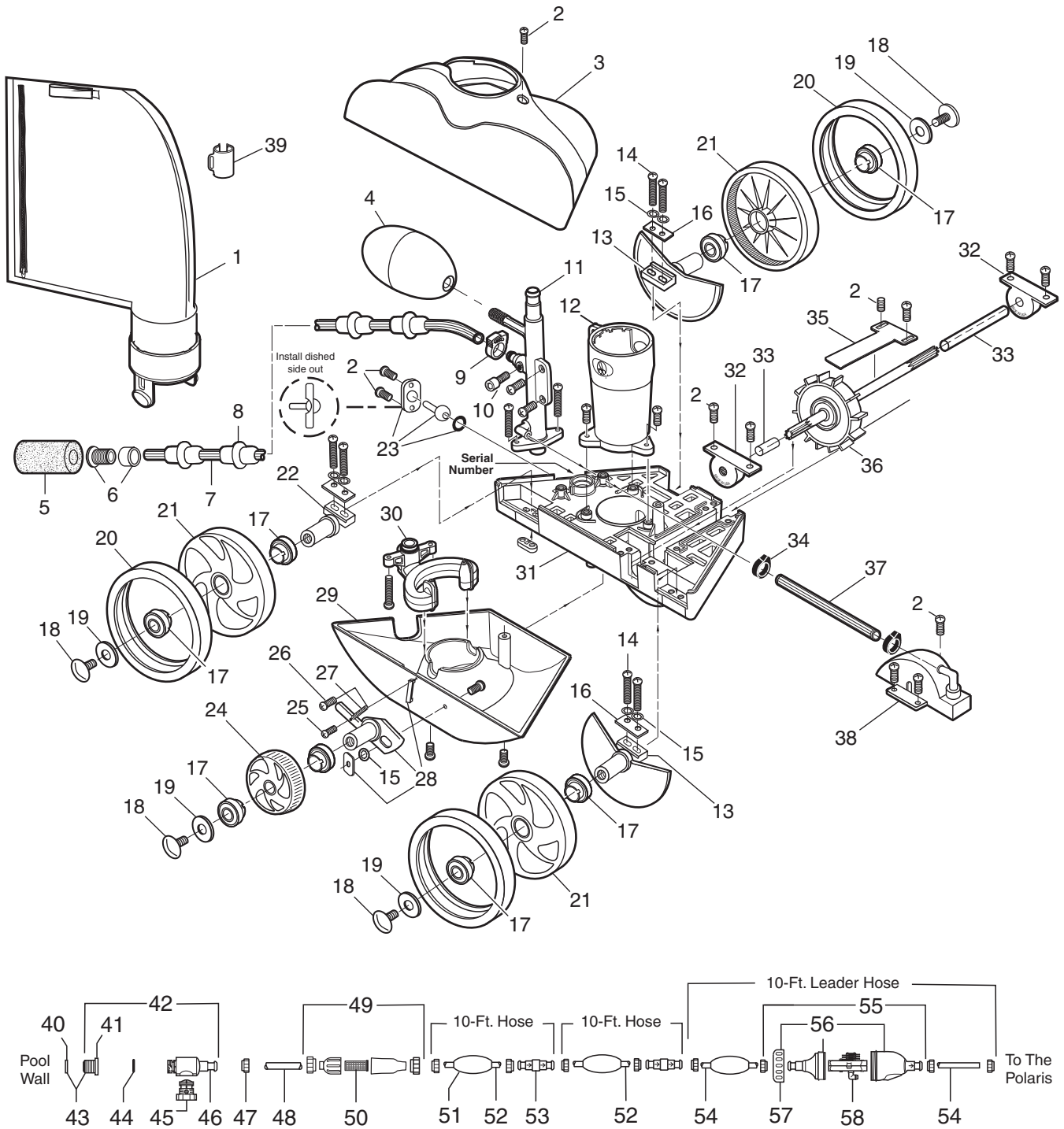
Part# A49

No.	Part No.	Qty.
13	C66	2
17	C60*	8
18	C55*	4
19	C64*	4
20	C10*	3
21	C6*	3
22	C65	1
24	C16*	1
28	C36	1
32	C80*	2
33	C83	1
36	C86*	1

NOTE: Black Max™ parts are not indicated on exploded parts diagrams or parts list. See Black Max Parts List on pages 279-280.

Polaris Vac-Sweep® 280

Part# F5



Polaris 280 TankTrax®

Part# F5T

Key No.	Part No.	Description	Qty.	List Price
1	K13*	All-Purpose Zippered Bag	1	\$40.05
2	C40	Screw, 10-32 x 3/8" SS Pan	20	\$1.80
3	K5	Top	1	\$45.46
4	A20	Float, Head	1	\$5.66
5	9-100-3105*	Sweep Hose Scrubber	1	\$2.33
6	B25	Orifice Tip w/ Orifice Tip Guard	1	\$2.52
7	B5	Sweep Hose Complete	1	\$28.45
8	B10*	Wear Rings	8	\$1.86
9	B15	Sweep Hose Attach Clamp	1	\$1.85
10	B20	Adjustment Screw, Sweep Hose	1	\$2.47
11	K30	Feed Pipe w/ Elbow	1	\$20.91
12	K20	Vacuum Tube	1	\$15.95
13	C66	Axle, Large (w/ Sand/Gravel Guard)	1	\$7.66
14	C76	Screw, 10-32 x 7/8" SS Pan	10	\$2.04
15	C45	Lock Washer for C36	7	\$1.71
16	C70	Axle Plate for C65/C66	3	\$2.33
17	C60*	Ball Bearings, Wheels	8	\$8.08
18	C55	Wheel Screw, Plastic	4	\$1.50
19	C64	Wheel Washer, Plastic	4	\$2.26
20	C10*	Tire, Max Trax®	1	\$9.09
21	C6	Wheel, Large (No Bearings Incl.)	3	\$11.34
22	K26	Axle Block - TankTrax	2	\$3.81
23	C131	Thrust Jet Kit	1	\$5.31
24	K27	Idler Wheel - TankTrax	1	\$7.85
25	K28	Swing Axle Kit - TankTrax	1	\$11.95
26	C18	Tire, TankTrax	1	\$56.54
27	K29	Base - TankTrax	1	\$37.83
28	K25	Water Management System	1	\$17.26

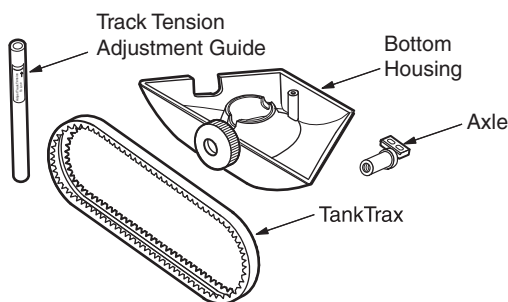
Key No.	Part No.	Description	Qty.	List Price
29	K145	Frame	1	N/A
30	C80*	Ball Bearings, Turbine	2	\$14.57
31	C83	Turbine Shaft Tubes	1	\$2.04
32	9-100-7170	Hose Clamp for WMS	2	\$1.60
33	A40	Turbine Shaft Shield	1	\$6.77
34	C86	Drive Shaft Assy	1	\$27.40
35	C120	Hose for C110, 7 1/2"	1	\$1.27
36	C110	Turbine Cover w/ Elbow	1	\$10.10
37	9-100-1018	Bag Collar	1	\$2.04
38	10-112-00	Restrictor Disks, Red and Blue	2	\$2.52
39	6-500-00	Universal Wall Fitting (UWF®)	1	\$3.60
40	9-100-9001	UWF Connector Assy	1	\$27.54
41	10-108-00	UWF Restrictor Kit	1	\$7.45
42	6-505-00	O-Ring, UWF/QD	1	\$1.62
43	9-100-9002	Pressure Relief Valve, Black	1	\$8.66
44	D29	Quick Disconnect, UWF	1	\$7.47
45	D15	Nut, Feed Hose	10	\$3.34
46	D44	Adapter Hose, 8 1/2"	1	\$5.89
47	48-080	In-Line Filter Assy	1	\$48.96
48	48-222	Screen, In-Line Filter	1	\$9.08
49	D10	Float, Feed Hose	9	\$5.83
50	D45	Feed Hose, 10'	2	\$25.77
51	D20*	Swivel, Ball Bearing	2	\$11.51
52	D50	Feed Hose, Leader, 10'	1	\$39.83
53	G52	Back-Up Valve Kit	1	\$74.96
54	G54	Case Kit for G52	1	\$22.29
55	G57	Collar, Back-Up Valve	1	\$3.79
56	G53	Mechanism for G52	1	\$55.37

*Suggested stocking parts.
N/A-Not Available for purchase

280 TankTrax Conversion Kit

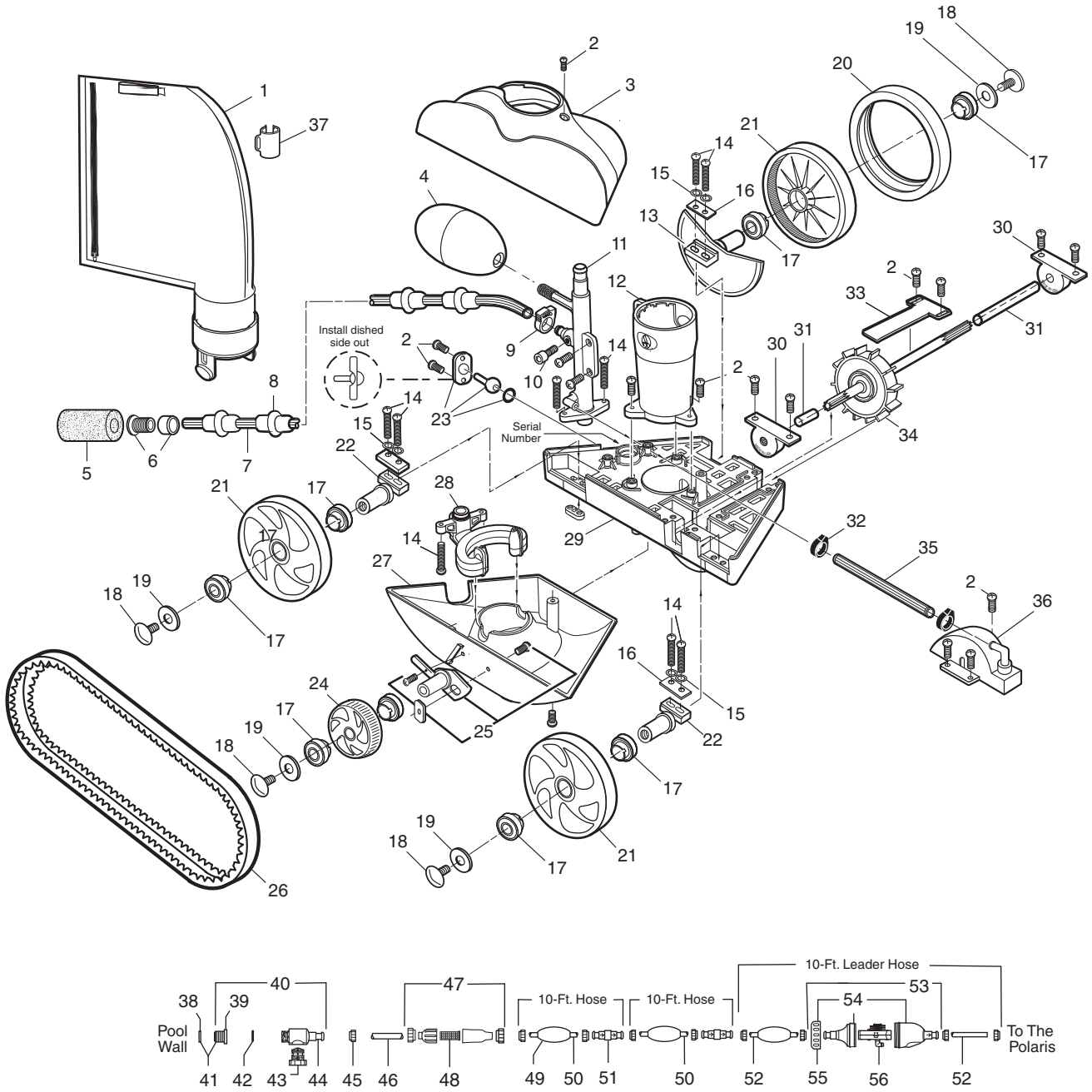
Part# C15

Description	Qty.
Track Tension Adjustment Guide	1
Bottom Housing	1
TankTrax	1
Axle	1



Polaris 280 TankTrax®

Part# F5T



Polaris 180

Part# F20

Key No.	Part No.	Description	Qty.	List Price
1	A16*	All-Purpose Bag (180)	1	\$33.60
2	C40*	Screw, 10-32 x 3/8" SS Pan Head	10	\$1.80
3	A5	Top	1	\$47.13
4	A20*	Float, Head	1	\$5.66
5	9-100-3105*	Sweep Hose Scrubber	1	\$2.33
6	B25	Orifice Tip w/ Orifice Tip Guard	1	\$2.52
7	B5*	Sweep Hose Complete	1	\$28.45
8	B10*	Wear Rings	8	\$1.86
9	B15*	Sweep Hose Attachment Clamp	1	\$1.85
10	B20	Adjustment Screw, Sweep Hose	1	\$2.47
11	C66	Axle, Large, w/ Sand/Gravel Guard	2	\$7.66
12	C75	Screw/Nut, 10-32 x 7/8" SS Pan Head	6	\$3.06
13	C45	Lock Washer for C36	7	\$1.71
14	C70	Axle Plate for C65/C66	3	\$2.33
15	C60*	Ball Bearings, Wheels	8	\$8.08
16	C6*	Wheel, Large, No Bearings Incl.	3	\$11.34
17	C10*	Tire, Max Trax®	3	\$9.09
18	C64*	Wheel Washer, Plastic	4	\$2.26
19	C55*	Wheel Screw, Plastic	4	\$1.50
20	C65	Axle, Large (Rear Wheel Only)	1	\$3.81
21	C131	Thrust Jet Kit	1	\$5.31
22	C16*	Idle Wheel, Small	1	\$7.82
23	C30	Screw, 4-40 x 3/16" SS Pan Head	1	\$2.04
24	C32	Screw, 6-32 x 1/2" SS Pan Head	1	\$2.04
25	C25	Spring for C36	1	\$2.12
26	C36	Swing Axle Kit	1	\$11.95
27	A10	Base w/ Bracket	1	\$38.20
28	C145	Frame (Warranty Only)	1	N/A
29	C80*	Ball Bearings, Turbine	2	\$14.57
30	C83	Turbine Shaft Tubes	1	\$2.04
31	C86*	Drive Shaft Assy	1	\$27.40
32	A40	Turbine Shaft Shield	1	\$6.77
33	A30	Screw, #10 x 1/2" SS Pan Head, Self-tap	5	\$0.35
34	9-100-7170	Hose Clamp for WMS	2	\$1.60
35	C120	Hose for C110, 7 1/2"	1	\$1.27
36	C115	Elbow for C110 or Feed Mast Tube	2	\$3.03
37	C110	Turbine Cover w/ Elbow	1	\$10.10
38	10-112-00	UWF Restrictor Disks, Red and Blue	2	\$2.52

Key No.	Part No.	Description	Qty.	List Price
39	6-500-00	Universal Wall Fitting (UWF®)	1	\$3.60
40	9-100-9001*	UWF Connector Assy	1	\$27.54
41	10-108-00	UWF Restrictor Kit	1	\$7.45
42	6-504-00*	Filter Screen, UWF/QD	1	\$7.00
43	6-505-00*	O-Ring, UWF/QD	1	\$1.62
44	9-100-9002	Pressure Relief Valve, Black	1	\$8.66
45	D29	Quick Disconnect (QD), UWF	1	\$7.47
46	D15	Nut, Feed Hose	10	\$3.34
47	D44	Adapter Hose, 8 1/2"	1	\$5.89
48	D20	Swivel, Ball Bearing	3	\$11.51
49	D10*	Float, Feed Hose	9	\$5.83
50	D45	Feed Hose, 10 ft.	2	\$25.77
51	D50	Feed Hose, Leader, 10 ft.	1	\$39.83
52	G52*	Back-Up Valve Kit	1	\$74.96
53	G54	Case Kit for G52	1	\$22.29
54	G57	Collar, Back-Up Valve	1	\$3.79
55	G53	Mechanism for G52	1	\$55.37

*Suggested stocking parts.
N/A-Not Available for purchase

180 Rebuild Kit

Part# A47

No.	Part #	Qty.
1	A16*	1
3	A5	1
4	A20*	1
7	B5*	1
9	B15*	1
11	C66	2
15	C60*	8
16	C6*	3
17	C10*	3
18	C64*	4
19	C55*	1
20	C65	1
21	C131	1
22	C16*	1
26	C36	1
27	A10	2
29	C80*	1
30	C83	1
31	C86*	1

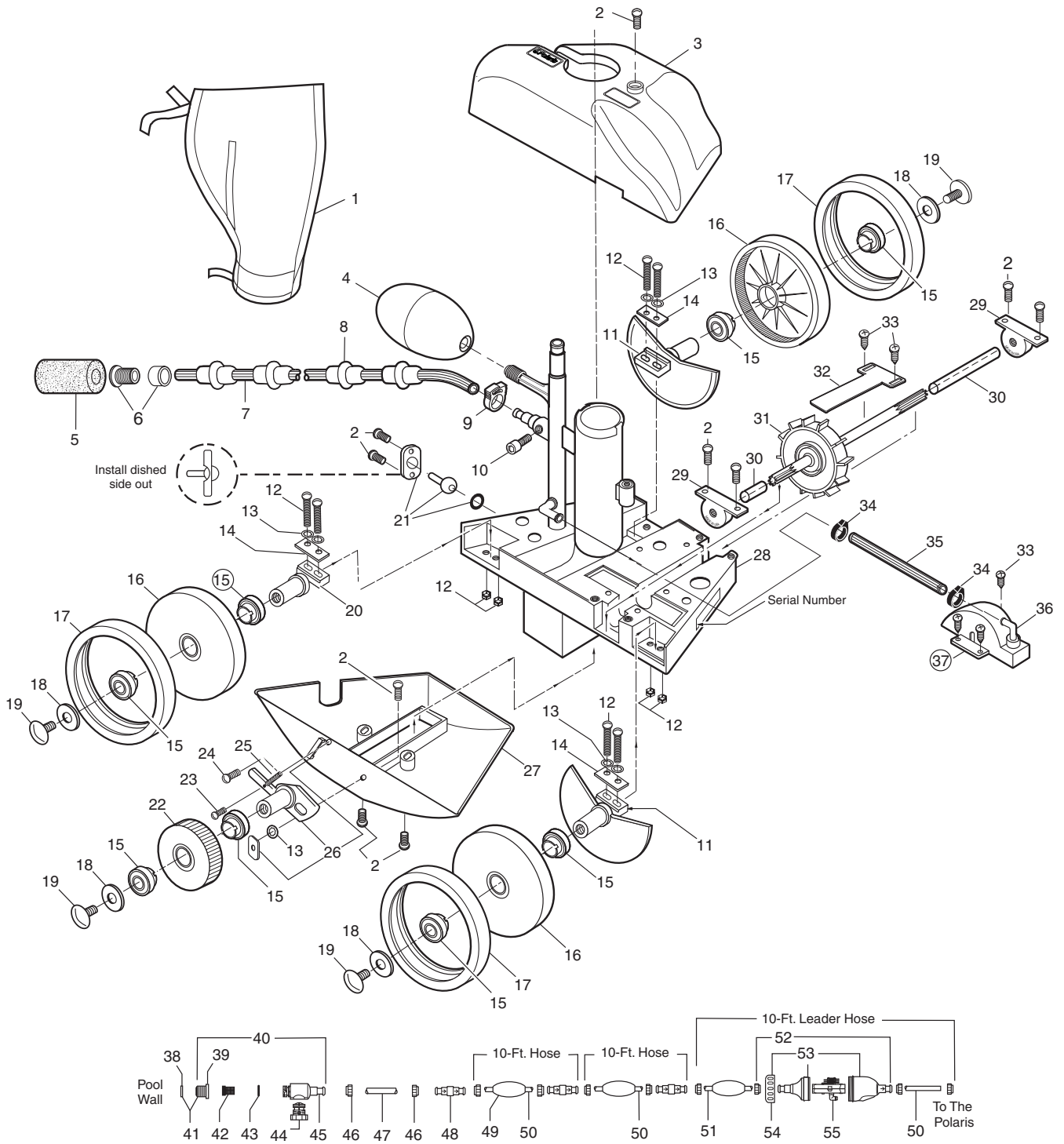
180/280 Tune-Up Kit

Part# A49

No.	Part #	Qty.
11	C66	2
15	C60*	8
16	C6*	3
17	C10*	3
18	C64*	4
19	C55*	4
20	C65	1
22	C16*	1
26	C36	1
29	C80*	2
30	C83	1
31	C86*	1

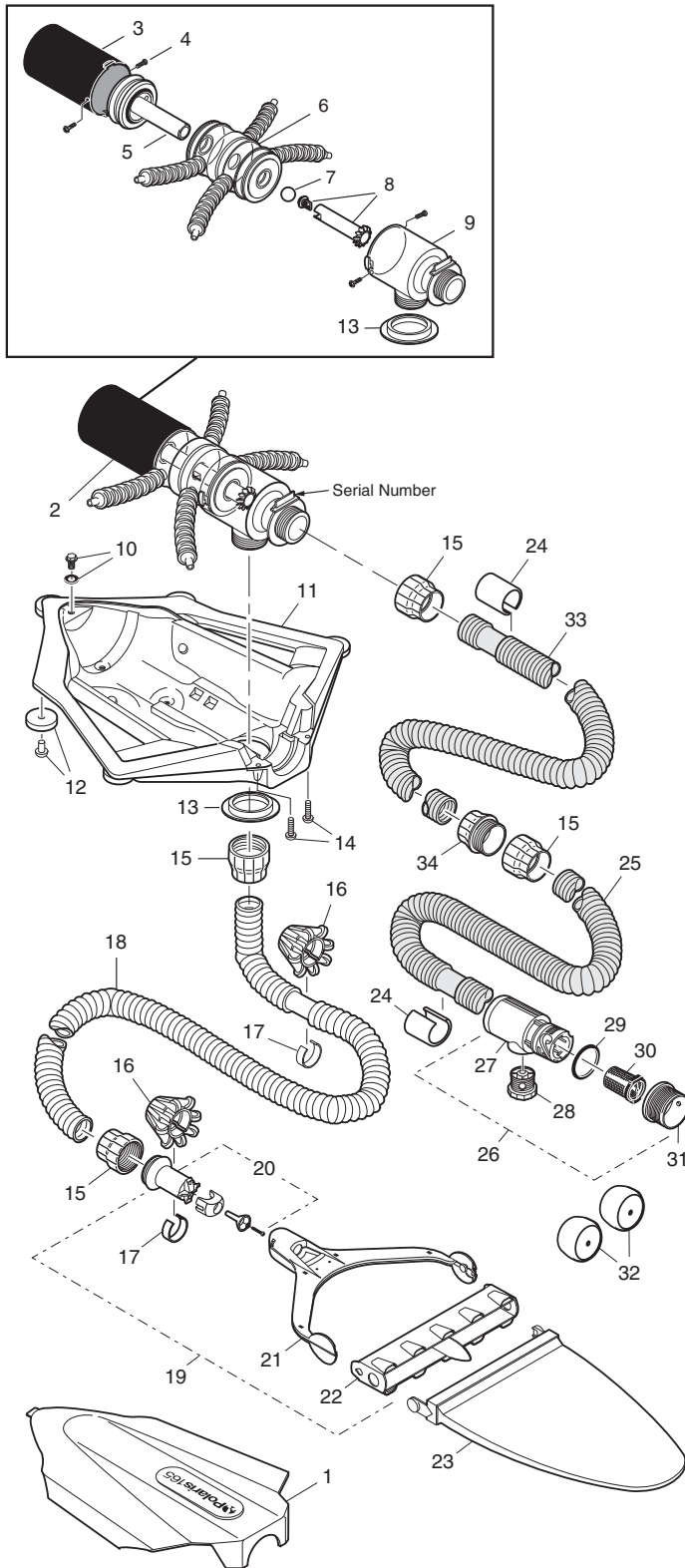
Polaris 180

Part# F20



Polaris Vac-Sweep® 165

Part# 6-120-00



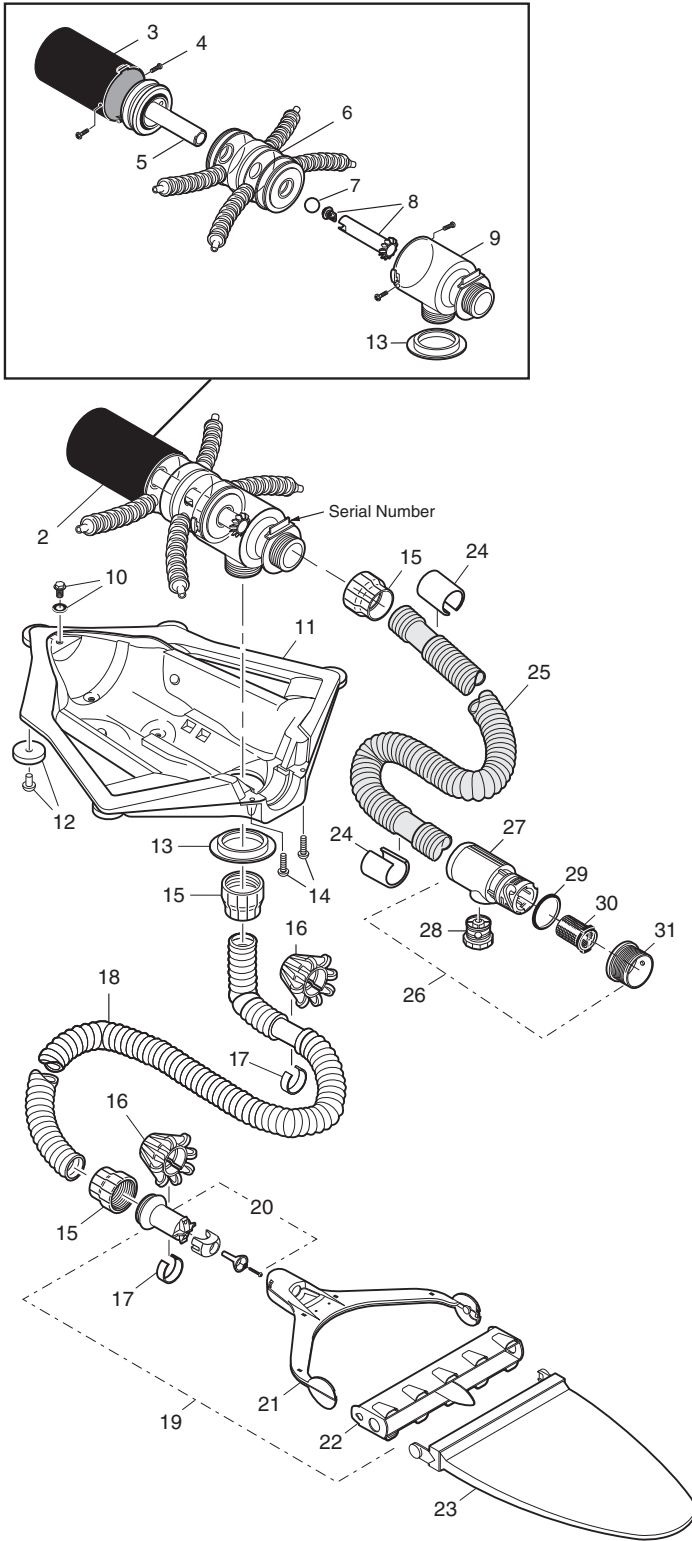
Key No.	Part No.	Description	Qty.	List Price
1	6-306-00	Surface Module Top, Granite	1	\$35.08
2	6-400-00*	Mechanism	1	\$138.61
3	6-407-00	Cylinder	1	\$25.23
4	6-413-00	Screw, Mechanism, #6 x 5/16" SS Sheet Metal, Blunt-End	4	\$0.26
5	6-411-00	Piston Assy	1	\$21.65
6	6-409-00	Center Chamber Assy	1	\$47.36
7	6-403-00	Randomizer Ball	1	\$0.83
8	6-406-00*	Filter Connector/Randomizer Tube Kit	1	\$7.68
9	6-408-00	Connector Chamber	1	\$23.88
10	6-507-00	Drain Plug Assy	1	\$2.04
11	6-305-00	Body Bottom Assy	1	\$75.91
12	6-301-00	Body Bottom Wheel Kit	5	\$2.49
13		Support Collar (Included w/ 6-400-00)	1	N/A
14	6-302-00	Screw, Top, #10 x 3/4" SS Sheet Metal, Pan Head	2	\$0.54
15	6-104-00	Hose Connector, Female	4	\$3.52
16	6-107-00*	Wheel Cage Assy	9	\$6.14
17	6-110-00	Hose Weight	9	\$1.65
18	6-114-00*	Sweep Hose Complete, 10 ft.	1	\$70.97
19	6-212-00	Jet Sweep Assy	1	\$54.50
20	6-116-00	Jet Body Assy	1	\$11.67
21	6-211-00	Jet Sweep Harness	1	\$25.54
22	6-210-00	Jet Sweep Head	1	\$9.53
23	6-206-00*	All-Purpose Bag	1	\$30.38
24	6-222-00	Float	24	\$3.50
25	6-225-00	Float Hose, 24 ft. (Hose Only)	1	\$39.99
26	6-508-00*	UWF® Connector Assy	1	\$25.59
27	6-502-00	Quick Disconnect, UWF	1	\$7.49
28	6-503-00	Pressure Relief Valve	1	\$8.66
29	6-505-00*	O-Ring, UWF/QD	1	\$1.62
30	6-504-00*	Filter Screen, UWF/QD	1	\$7.00
31	6-500-00*	Universal Wall Fitting (UWF)	1	\$3.60
32	10-107-00	Eyeball Regulator	2	\$5.25
33	6-221-00*	Float Hose Extension Kit, 8 ft.	1	\$27.93
34	6-103-00	Hose Connector, Male	1	\$3.52

*Suggested stocking parts.

N/A-Not Available for purchase

Polaris Vac-Sweep® 65

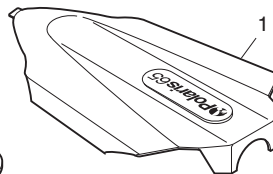
Part# 6-130-00



Key No.	Part No.	Description	Qty.	List Price
1	6-308-00	Surface Module Top, Blue	1	\$37.19
2	6-400-00*	Mechanism	1	\$138.61
3	6-407-00	Cylinder	1	\$25.23
4	6-413-00	Screw, Mechanism, #6 x 5/16" SS Sheet Metal, Blunt-End	4	\$0.26
5	6-411-00	Piston Assy	1	\$21.65
6	6-409-00	Center Chamber Assy	1	\$47.36
7	6-403-00	Randomizer Ball	1	\$0.83
8	6-406-00*	Filter Connector/Randomizer Tube Kit	1	\$7.68
9	6-408-00	Connector Chamber	1	\$23.88
10	6-507-00	Drain Plug Assy	1	\$2.04
11	6-305-00	Body Bottom Assy	1	\$75.91
12	6-301-00	Body Bottom Wheel Kit	5	\$2.49
13		Support Collar (Included w/ 6-400-00)	1	N/A
14	6-302-00	Screw, Top, #10 x 3/4" SS Sheet Metal, Pan Head	2	\$0.54
15	6-104-00	Hose Connector, Female	3	\$3.52
16	6-107-00*	Wheel Cage Assy	6	\$6.14
17	6-110-00	Hose Weight	6	\$1.65
18	6-106-00*	Sweep Hose Complete, 7 ft.	1	\$51.50
19	6-212-00	Jet Sweep Assy	1	\$54.50
20	6-116-00	Jet Body Assy	1	\$11.67
21	6-211-00	Jet Sweep Harness	1	\$25.54
22	6-210-00	Jet Sweep Head	1	\$9.53
23	6-206-00*	All-Purpose Bag	1	\$30.38
24	6-222-00	Float	24	\$3.50
25	6-225-00	Float Hose, 24 ft.	1	\$39.99
26	6-508-00*	UWF® Connector Assy	1	\$25.59
27	6-502-00	Quick Disconnect, UWF	1	\$7.49
28	6-503-00	Pressure Relief Valve	1	\$8.66
29	6-505-00*	O-Ring, UWF/QD	1	\$1.62
30	6-504-00*	Filter Screen, UWF/QD	1	\$7.00
31	6-500-00*	Universal Wall Fitting (UWF)	1	\$3.60

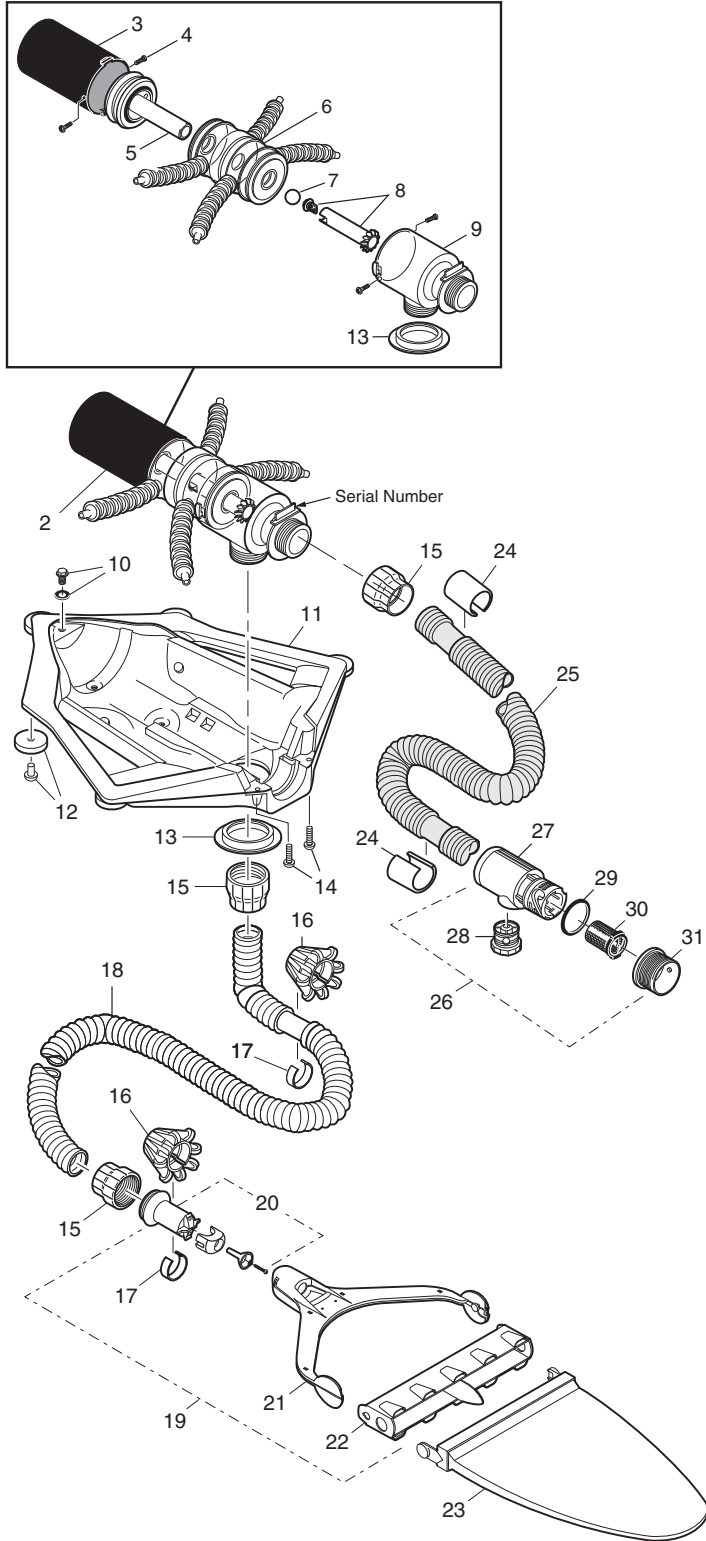
*Suggested stocking parts.

N/A-Not Available for purchase



Polaris Turbo Turtle®

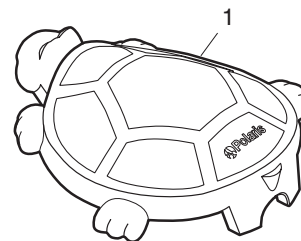
Part# 6-130-00T



Key No.	Part No.	Description	Qty.	List Price
1	6-309-00	Turtle Top	1	\$71.80
2	6-400-00*	Mechanism	1	\$138.61
3	6-407-00	Cylinder	1	\$25.23
4	6-413-00	Screw, Mechanism, #6 x 5/16" SS Sheet Metal, Blunt-End	4	\$0.26
5	6-411-00	Piston Assy	1	\$21.65
6	6-409-00	Center Chamber Assy	1	\$47.36
7	6-403-00	Randomizer Ball	1	\$0.83
8	6-406-00*	Filter Connector/Randomizer Tube Kit	1	\$7.68
9	6-408-00	Connector Chamber	1	\$23.88
10	6-507-00	Drain Plug Assy	1	\$2.04
11	6-305-00	Body Bottom Assy	1	\$75.91
12	6-301-00	Body Bottom Wheel Kit	5	\$2.49
13		Support Collar (Included w/ 6-400-00)	1	N/A
14	6-302-00	Screw, Top, #10 x 3/4" SS Sheet Metal, Pan Head	2	\$0.54
15	6-104-00	Hose Connector, Female	3	\$3.52
16	6-107-00*	Wheel Cage Assy	6	\$6.14
17	6-110-00	Hose Weight	6	\$1.65
18	6-106-00*	Sweep Hose Complete, 7 ft.	1	\$51.50
19	6-212-00	Jet Sweep Assy	1	\$54.50
20	6-116-00	Jet Body Assy	1	\$11.67
21	6-211-00	Jet Sweep Harness	1	\$25.54
22	6-210-00	Jet Sweep Head	1	\$9.53
23	6-206-00*	All-Purpose Bag	1	\$30.38
24	6-222-00	Float	24	\$3.50
25	6-225-00	Float Hose, 24 ft.	1	\$39.99
26	6-508-00*	UWF® Connector Assy	1	\$25.59
27	6-502-00	Quick Disconnect, UWF	1	\$7.49
28	6-503-00	Pressure Relief Valve	1	\$8.66
29	6-505-00*	O-Ring, UWF/QD	1	\$1.62
30	6-504-00*	Filter Screen, UWF/QD	1	\$7.00
31	6-500-00*	Universal Wall Fitting (UWF)	1	\$3.60
33	6-221-00*	Float Hose Extension Kit, 8 ft.	1	\$27.93
34	6-103-00	Hose Connector, Male	1	\$3.52

*Suggested stocking parts.

N/A-Not Available for purchase



Polaris 480PRO Black Max™ Parts

Part No.	Description	List Price
BAG PARTS		
48-058	SuperBag (Double), Black	\$55.70
48-234	Disposable Bag, Black (3) w/o Collar	\$36.18
48-235	Zippered All Purpose Bag, Black	\$43.69
48-237	Disposable Bag, Black (3) w/ Collar	\$38.76
B3	Sweep Hose Weight, Black	\$18.32
B6	Sweep Hose Complete, Black	\$30.12
B16	Sweep Hose Attachment Clamp, Black	\$3.00
HEAD PARTS		
48-049	Tire, PosiTrax® Black for Fiberglass and Tile Pools Only	\$28.65
48-202	480 Lower Housing, Black	\$29.15
48-203	480 Upper Housing/Handle Assy, Black	\$81.32
48-204	480 Vacuum Tube and Feedpipe, Black	\$17.03
48-208	480 Vacuum Plate Assembly, Black	DISCONTINUED
48-230	Bag Clip Assy, Black	\$6.90
48-231	480 Wide Wheel, Black	\$30.21
48-232	480 WideTrax® Tire, Black	\$25.19
48-233	480 Wheel Hubcap, Black	\$2.28
48-243	480 Blank License, Black	
48-247	License Plate w/ Logo, Black	\$2.54
B11	Wear Ring, Black	\$2.14
HOSE PARTS		
D11	Float, Feed Hose, Black	\$6.85
D21	Swivel, Ball Bearing, Black	\$13.41
D47	Feed Hose, Black	\$43.76
D52	Leader Hose, Black	\$43.76
G62	Back-Up Valve, Black (480/380/280)	\$83.44
G64	Case Kit for G62, Black (480/380/280)	\$24.57
48-085	In-Line Filter Assy, Black	\$51.98
48-236	480 Bag Clasp, Black	\$2.79
48-240	Feed Hose Connector Assy, Black	\$14.47
48-270	Feed Hose Assy, Black	\$197.89
6-550-00	Universal Wall Fitting, Black (480/380/360/280)	\$3.77
9-100-9005	UWF® Connector Assy, Black (480/380/280)	\$27.42
48-212	480PRO Tune-Up Kit, Black	\$255.83

Polaris Vac-Sweep® 380 Black Max Parts

Part No.	Description	List Price
BAG PARTS		
9-100-1016	All-Purpose Bag, Black (380/360)	\$38.70
9-100-1019	Bag Collar, Black (380/280)	\$2.89
9-100-1022	Zippered All-Purpose Bag, Black (380/360)	\$43.69
9-100-1025	EZ Bag, Disposable Filter Bag (3), Black, w/o Collar (380/360)	\$34.96
9-100-1026	EZ Bag, Disposable Filter Bag (3), Black, w/ Collar (380/360)	\$37.45
HEAD PARTS		
A21	Float, Head, Black (380/360/280)	\$8.69
B3	Sweep Hose Weight, Black (380/360/280)	\$18.32
B6	Sweep Hose Complete, Black (380/280)	\$30.12
B16	Sweep Hose Attach Clamp, Black (380/360/280)	\$3.00
C11	Tire, Max Trax®, Black (380/360/280)	\$12.66
C14	Tire, PosiTrax® for Fiberglass and Tile Pools Only, Black (380/360/280)	\$15.43
9-100-1004	Wheel, Double-Side, Black (380/360)	\$13.23
9-100-1115	Hub Cap, Black (380/360)	\$2.06
9-100-1117	Wheel, Single-Side, Black (380/360)	\$11.42
9-100-1242	Top Assy, Black (380/360)	\$31.93
9-100-7007	Feed Pipe/Timer Blank Assy, Black (380)	\$10.83
9-100-7027	Base Assy, Black (380/360)	\$51.05
9-100-7031	Top and Base Assy Kit, Black (380/360)	\$76.63
HOSE PARTS		
B11	Wear Ring, Black	\$2.14
D11	Float, Feed Hose, Black (380/280)	\$6.85
D16	Nut, Feed Hose, Black (380/280)	\$3.46
D21	Swivel, Ball Bearing, Black (380/280)	\$13.41
D30	Quick Disconnect, UWF, Black (380/280)	\$10.78
D47	Feed Hose, 10', Black (380/280)	\$43.76
D52	Leader Hose, 10', Black (380/280)	\$43.76
G6	Feed Hose Complete w/ UWF, No Back-up Valve, Black (380/280)	\$188.63
G60	Double Acting Back-up Valve, Black	\$83.49
G62	Back-up Valve, Black (380/280)	\$83.44
G64	Case Kit for G62, Black (380/280)	\$24.57
G67	Collar, Back-up Valve, Black (380/360/280)	\$4.35
48-085	In-Line Filter Assy, Black (380/360/280)	\$51.98
48-222	Screen, In-Line Filter Only (480/380/280)	\$9.08
6-550-00	Universal Wall Fitting, Black (380/360/280)	\$3.77
9-100-3105	Sweep Hose Scrubber	\$2.33
9-100-3107	Leader Hose w/ Floats, Black (380/280)	\$43.76
9-100-9005	UWF Connector Assy, Black (380/280)	\$27.42
9-100-9006	Pressure Relief Assy, Black (380/280)	\$14.47

Polaris Vac-Sweep® 360 Black Max™ Parts

Part No.	Description	List Price
BAG PARTS		
9-100-1016	All-Purpose Bag, Black (380/360)	\$38.70
9-100-1022	Zippered All-Purpose Bag, Black (380/360)	\$43.69
9-100-1025	EZ Bag, Disposable Filter Bag (3), Black, w/o Collar (380/360)	\$34.96
9-100-1026	EZ Bag, Disposable Filter Bag (3), Black, w/ Collar (380/360)	\$37.45
9-100-3136	Collar, Bag Tie, Black (360)	\$6.01
HEAD PARTS		
A21	Float, Head, Black (380/360/280)	\$8.69
B3	Weight, Sweep Hose, Black (380/360/280)	\$18.32
B16	Sweep Hose Attach Clamp, Black (380/360/280)	\$3.00
C11	Tire, Max Trax®, Black (380/360/280)	\$12.66
C14	Tire, PosiTrax® for Fiberglass and Tile Pools Only, Black (380/360/280)	\$15.43
9-100-1001	Feed Pipe/Timer Blank Assy, Black (360)	\$20.32
9-100-1004	Wheel, Double-Side, Black (380/360)	\$13.23
9-100-1020	Sweep Hose Complete, Black (360)	\$29.02
9-100-1115	Hub Cap, Black (380/360)	\$2.06
9-100-1117	Wheel, Single-Side, Black (380/360)	\$11.42
9-100-1242	Top Assy, Black (380/360)	\$31.93
9-100-7027	Base Assy, Black (380/360)	\$51.05
9-100-7031	Top and Base Assy, Black, Complete (Kit replaces pre-Y03 360 Housing)	\$76.63
HOSE PARTS		
B11	Wear Rings, Black	\$2.14
G67	Collar, Back-up Valve, Black (380/360/280)	\$4.35
6-550-00	Universal Wall Fitting (UWF®), Black (380/360/280)	\$3.77
9-100-1201	In-Line Back-up Valve, Black (360)	\$83.49
9-100-1203	Case Kit, In-Line Back-up Valve, Black (360)	\$24.57
9-100-1207	Float, Feed Hose, Black (360)	\$3.85
9-100-1209	Double Acting Back-up Valve	\$83.49
9-100-3003	Swivel, Hose, Black (360)	\$23.98
9-100-3007	Quick Disconnect, UWF®, Black (360)	\$20.32
9-100-3010	UWF Connector Assy, Black (360)	\$31.93
9-100-3011	Pressure Relief Valve, Black (360)	\$9.53
9-100-3101	Feed Hose Complete w/ UWF, No Back-up Valve, Black (360)	\$196.18
9-100-3105	Sweep Hose Scrubber	\$2.33
9-100-3110	Feed Hose, 6 ft., Black (360)	\$18.96
9-100-3111	Feed Hose, 1 ft., Black (360)	\$3.52
9-100-3112	Hose Nut, Black (360)	\$3.44
BAG PARTS		
K17	All-Purpose Bag, Black	\$40.05
K18	Sand/Silt Bag, Black	\$38.76
K22	EZ Bag, Disposable Filter Bag (3) w/ Collar, Black (280)	\$37.47
K23	Zippered All-Purpose Bag, Black (280)	\$45.22
K24	EZ Bag, Disposable Filter Bag (3) w/o Collar, Black (280)	\$36.18
48-058	SuperBag, All-Purpose, double zipper w/ Collar, Black (480/280)	\$55.70

N/A-Not Available for purchase

Polaris Vac-Sweep 280 Black Max Parts

Part No.	Description	List Price
BAG PARTS (CONTINUED)		
9-100-1019	Bag Collar, Black (380/280)	\$2.89
HEAD PARTS		
A21	Float, Head, Black (380/360/280)	\$8.69
B3	Weight, Sweep Hose, Black (380/360/280)	\$18.32
B6	Sweep Hose Complete, Black (380/280)	\$30.12
B16	Sweep Hose Attach Clamp, Black (380/360/280)	\$3.00
C7	Wheel, Large, No Bearings Included, Black (280)	\$12.95
C11	Tire, Max Trax, Black (380/360/280)	\$12.66
C14	Tire, PosiTrax, for Fiberglass and Tile Pools Only, Black (380/360/280)	\$15.43
C17	Idler Wheel, Small, Black	\$9.45
C19	Tire, TankTrax®, Black	\$58.71
C23	Upgrade Kit, TankTrax, Black (280)	\$100.96
C24	Conversion Kit, TankTrax, Black (280)	\$112.46
C56	Wheel Screw, Plastic, Black (280)	\$1.77
C67	Wheel Washer, Plastic, Black (280)	\$2.54
C68	Axle, Large w/ Sand/Gravel Guard, Black (280)	\$9.37
K6	Top, Black	\$48.30
K11	Bottom w/ Bracket, Black	\$43.35
K21	Vacuum Tube, Black	\$17.57
K31	Feed Pipe w/ Elbow, Black	\$22.98
K146	Frame (Black) (Warranty Only)	
HOSE PARTS		
B11	Wear Rings, Black	\$2.14
D11	Float, Feed Hose, Black (380/280)	\$6.85
D16	Nut, Feed Hose, Black (380/280)	\$3.46
D21	Swivel, Ball Bearing, Black (380/280)	\$13.41
D30	Quick Disconnect, UWF, Black (380/280)	\$10.78
D47	Feed Hose, 10 ft., Black (380/280)	\$43.76
D52	Leader Hose, 10ft., Black (380/280)	\$43.76
G6	Feed Hose Complete w/ UWF, No Back-up Valve, Black (380/280)	\$188.63
G60	Double Acting Back-up Valve, Black	\$83.49
G62	Back-up Valve, Black (380/280)	\$83.44
G64	Case Kit for G62, Black (380/280)	\$24.57
G67	Collar, Back-up Valve, Black (380/360/280)	\$4.35
48-085	In-Line Filter Assy, Black	\$51.98
48-222	Screen, In-Line Filter (480/380/280)	\$9.08
6-550-00	Universal Wall Fitting, Black (380/360/280)	\$3.77
9-100-3105	Sweep Hose Scrubber	\$2.33
9-100-3107	Leader Hose w/ Floats, Black (380/280)	\$43.76
9-100-9005	UWF Connector Assy, Black (380/280)	\$27.42
9-100-9006	Pressure Relief Assy, Black (380/280)	\$14.47