

White Goods

White Goods
for Pools & Spas

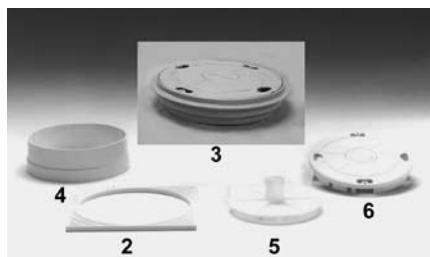


Admiral™ S15 & S20 Skimmers

Admiral Skimmers for Pools and Spas



Admiral Skimmers



Admiral Skimmer Accessories

Featured Highlights

- Admiral S20: Reinforced PVC base with slip or threaded ports
- Admiral S15: High strength ABS body
- Slip FIPT, 1-1/2 inch or 2 inch
- Variety of throat lengths
- Easy to install
- 1-1/2 inch or 2 inch ports
- Flap weir or the exclusive circular weir
- Custom logo disk available
- Exclusive lock down lid
- Lid extension collars

Admiral™ S15 skimmers offer threaded single port base and throats for concrete, vinyl and fiberglass construction requirements. The S20 line of Admiral™ skimmers have a PVC reinforced twin port base. S20 may be purchased with equalizer for commercial and NSF applications or for when the second port is connected to the main drain. All models include the exclusive lock down lid that can be personalized with custom logo disks and are available with a flap weir or the exclusive circular weir for superior skimming action. A wide variety of colored lids and rings are available to coordinate with most decking materials. Extension collars allow added height to the deck ring. Vacuum plate allows you to vacuum directly through the basket. Admiral™ spring valve is a tension controlled bypass valve for commercial installations requiring a valve on the equalizer line.

Ordering Information

Product	Description	Carton Qty	Carton Wt (Lbs)
S15 SKIMMERS FOR CONCRETE CONSTRUCTION			
84120100	S15, circ. weir, 1-1/2 in., threaded	1	10
84120200	S15, circ. weir, 2 in., threaded	1	10
84900300	S15, flap weir, 1-1/2 in., threaded	1	10
S15 SKIMMERS FOR VINYL CONSTRUCTION			
84151500	S15, OM circ. weir, 1-1/2 in., threaded	1	10
84141100	S15, OM circ. weir, 1-1/2 in., threaded short throat	1	10
S20 SKIMMERS FOR CONCRETE CONSTRUCTION			
84420405	S20, flap weir, no equalizer, 1-1/2 in. slip	1	10
84420500	S20, circ. weir, equalizer, 2 in. threaded, FIPT ¹	1	12
84420505	S20, circ. weir, equalizer, 2 in. slip ¹	1	12
84420530	S20, circ. weir, equalizer, 2 in. threaded, tan	1	12
84420535	S20, circ. weir, equalizer, 2 in. slip, tan	1	12
84420730	S20, circ. weir, 2 in. threaded, tan	1	10
84420735	S20, circ. weir, 2 in. slip, tan	1	10
84420600	S20, flap weir, equalizer, 2 in. threaded, FIPT ¹	1	12
84420605	S20, flap weir, equalizer, 2 in. slip ¹	1	12
84420630	S20, flap weir, equalizer, 2 in. threaded, tan ¹	1	12
84420635	S20, flap weir, equalizer, 2 in. slip, tan	1	12
84420700	S20, circ. weir, no equalizer, 2 in. threaded, FIPT	1	10
84420705	S20, circ. weir, no equalizer, 2 in. slip	1	10
84420800	S20, flap weir, no equalizer, 2 in. threaded, FIPT	1	10
84420805	S20, flap weir, no equalizer, 2 in. slip	1	10
84420730	S20, circ. weir, 2 in. threaded, tan	1	10
84420735	S20, circ. weir, 2 in. slip, tan	1	10
S20 SKIMMERS FOR VINYL LINER POOLS			
84452200	S20S flap weir, equalizer, XLG std. 1-1/2 in. threaded, short throat 8-3/4"	1	10
84472400	S20L flap weir, XLG std. 1-1/2 in. threaded, long throat 13"	1	10
S20 SKIMMERS FOR FIBERGLASS POOLS			
500023	S20, "WEDGE", flap weir, equalizer, 2 in. slip ²	1	10


¹ NSF listed for commercial installation.² NSF listed.

NOTE: Protect by US patent 5,551,191

Admiral™ S15 & S20 Skimmers (Cont'd)

Ordering Information

Item	Product	Description	Carton Qty	Carton Wt (Lbs)
SKIMMER ACCESSORIES				
	87204600	Hydrostatic Relief Spring Valve, 2 in. for S20 commercial equalizer	1	0.25
2	85000700	Square ring seat, S15 & S20, 10-1/2 in. x 10-1/2 in.	1	0.50
3	85018000	Lid with ring seat, S15 & S20, 9 in. beige	1	1
4	85002300	Extension collar for ring seat, adjustable to 3 in.	1	0.50
5	85001900	Vacuum plate adapter, S15 & S20	1	0.50
6	85007400	Lock down lid for existing Admiral skimmers, white	1	0.50
6	85007411	Lock down lid for existing Admiral skimmers, black	1	0.50
6	85007413	Lock down lid for existing Admiral skimmers, grey	1	0.50
6	85007430	Lock down lid for existing Admiral skimmers, tan	1	0.50
	85000400	Lid/collar set, white	1	0.50
	85000411	Lid/collar set, black	1	0.50



We can customize Admiral Skimmer Deck Lids with your professionally supplied artwork. Based on a minimum quantity of 500 lids there is a one-time \$500.00 set up charge for a single design. Subsequent changes are subject to additional fees. Contact your Pentair Water Pool and Spa Representative for more information.

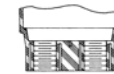
Dimensions and Performance



2 in. NPSM Thread



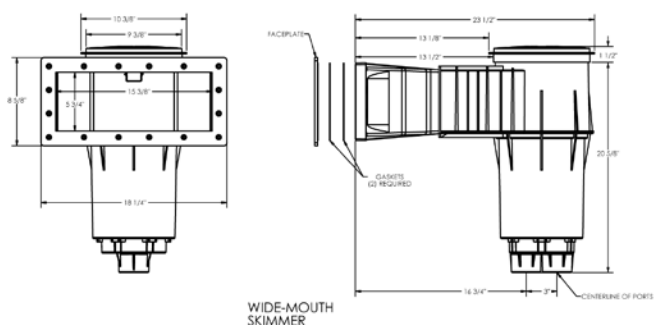
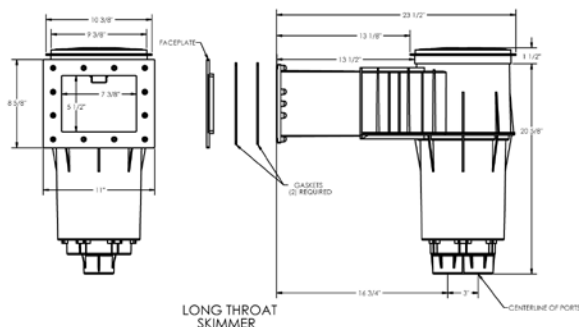
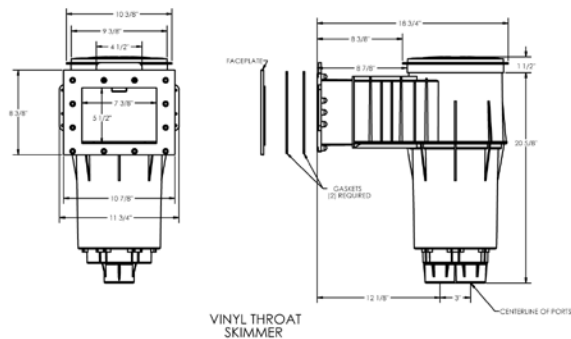
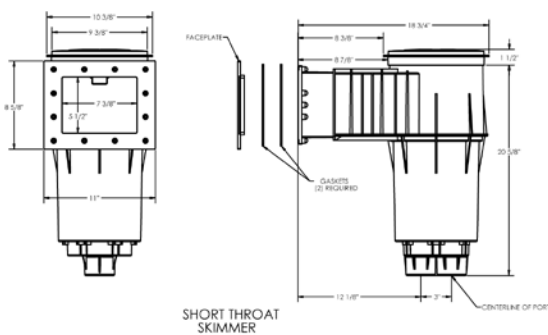
2 in. NPSM Thread
2 in. Slip



1-1/2 in. NPSM Thread



1-1/2 in. NPSM Thread
1-1/2 in. Slip



See pages 542 for replacement parts.

Bermuda™ Skimmers

Skimmers for Gunite Pools, Vinyl Liner and Fiberglass Pools



Gunite
Skimmer



Vinyl/Fiberglass
Skimmer



Wide-mouth Vinyl/Fiberglass
Skimmer

Featured Highlights

Choose among the following configurations:

- ABS or PVC
- White, black and tan colors available
- 1-1/2 in. or 2 in. slip or threaded ports
- Optional equalizer valve

Bermuda Skimmers feature a heavy-duty one-piece construction with sturdy external ribbing for superior strength. All Bermuda Skimmers for vinyl liner and fiberglass pools are made from ABS plastic.

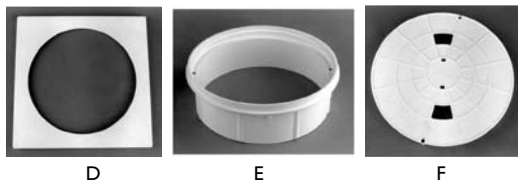
Ordering Information

Product	Description	Material Type	Carton Qty	Carton Wt (Lbs)
GUNITE SKIMMERS				
506300	2 in. Slip ports, white	PVC	1	10
506301	2 in. Threaded ports, white	PVC	1	10
506302	2 in. Slip ports, tan	PVC	1	10
506304	1-1/2 in. Slip ports, white	PVC	1	10
506361	2 in. Slip ports, white	ABS	1	10
506362	2 in. Threaded ports, white	ABS	1	10
506363	1-1/2 in. Slip ports, white	ABS	1	10
506364	1-1/2 in. Threaded ports, white	ABS	1	10
506365	2 in. Slip ports, black	ABS	1	10
GUNITE SKIMMERS WITH FLOAT VALVE ASSEMBLY.				
506308	2 in. Slip ports with float valve, white	PVC	1	10
506309	2 in. Threaded ports with float valve, white	PVC	1	10
506310	2 in. Slip ports, tan	PVC	1	10
GUNITE SKIMMERS WITH FLOAT VALVE & EQUALIZER VALVE ASSEMBLY.				
506370	BKG with 2 in. slip ports, white ¹	PVC	1	10
506380	ABKG with 2 in. slip ports, white ¹	ABS	1	10
506381	ABKG with 2 in. threaded ports, white ¹	ABS	1	10
506382	2 in. Slip ports, tan	ABS	1	10
VINYL/FIBERGLASS SKIMMER				
506420	1-1/2 in. Slip ports, white	ABS	1	10
506421	1-1/2 in. Threaded ports, white	ABS	1	10
506480	1-1/2 in. Threaded ports, black	ABS	1	10
506423	2" Slip ports, white			
WIDE-MOUTH SKIMMER FOR VINYL LINER & FIBERGLASS POOLS				
506520	1-1/2 in. Slip ports, white	ABS	1	10
506521	1-1/2 in. Threaded ports, white	ABS	1	10
506581	1-1/2 in. Threaded ports, black	ABS	1	10
BERMUDA KITS				
561312	1-1/2 in. Threaded ports, white (p/n 506421) with vinyl liner sump with anti-vortex plate (p/n 07017-0126), 2 vinyl liner return fittings (p/n 86205100) and 2 3/4 in. eyeball return fitting (p/n 540021)			26

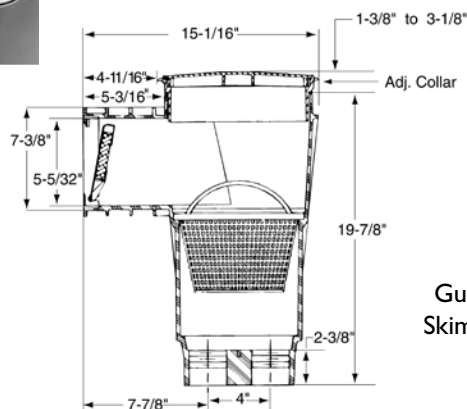
¹ NSF listed

Bermuda™ Skimmers (Cont'd)

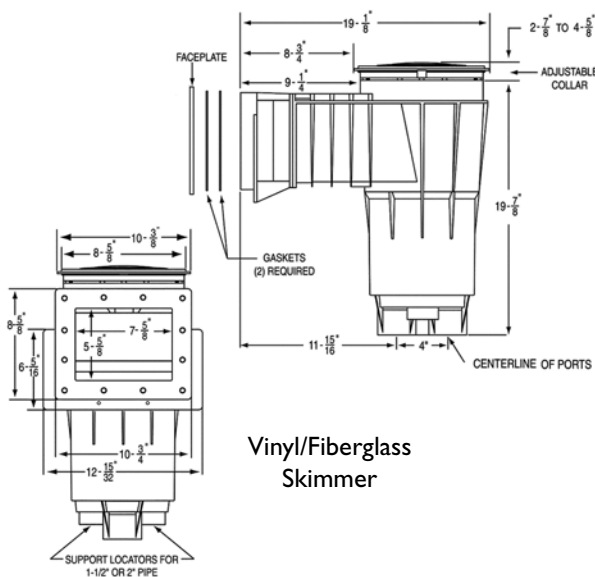
Item	Product	Description	Carton Wt (Lbs)
BERMUDA ACCESSORIES			
A	506160	Float valve assembly	1
B	506161	Vacuum plate/insert assembly, white	0.50
C	506162	Equalizer valve assembly	1.3
D	516220	Square deck ring seat, white	0.62
E	516253	Gunite extension collar, white, 3-1/8 in. length	0.20
E	516258	Gunite extension collar, tan, 3-1/8 in. length	0.60
E	516329	Gunite extension collar, black, 3-1/8 in. length	0.60
F	510327	Deck lid and collar assembly with screws, dark grey	1.3
F	510332	Deck lid, dark grey	0.50
F	516215	Deck lid, white	0.50
F	516216	Deck lid, tan	0.50
F	516254	Deck lid and collar assembly with screws, white	1.3
F	516261	Deck lid and collar assembly with screws, tan	1.3
F	516306	Deck lid, black	0.50
F	516328	Deck lid and collar assembly with screws, black	1.3



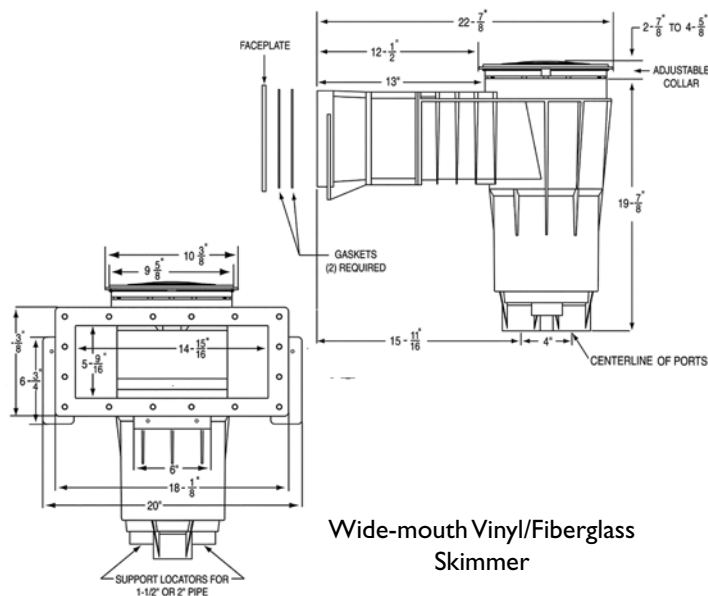
Dimensions and Performance



Gunite Skimmer



Vinyl/Fiberglass Skimmer



Wide-mouth Vinyl/Fiberglass Skimmer

See pages 543 for replacement parts.

U-3 Skimmers

SwimQuip® Inground Skimmers



For Concrete Pools



For Vinyl Pools

Ordering Information

Product	Description	Carton Qty	Carton Wt (Lbs)
SKIMMERS FOR CONCRETE POOLS			
08650-1403	U-3 Skimmer w/White Lid & Frame, 2" NPT with 1-1/2" NPT Reducers; Incl. Float and Check Valve, Basket ¹	48	10
08650-3403	U-3 Skimmer w/Gray Lid & Frame, 2" NPT with 1-1/2" NPT Reducers; Incl. Float and Check Valve, Basket; NSF ¹	48	10
08650-3403E	U-3 Skimmer Gray, w/Tan Lid & Frame, 2" NPT with 1-1/2" NPT Reducers; Incl. Float and Check Valve, Basket; NSF ¹	48	10
08650-2403	U-3 Skimmer w/Tan Lid & Frame, 2" NPT with 1-1/2" NPT Reducers; Incl. Float and Check Valve, Basket ¹	48	10
08650-1404	U-3 Skimmer w/White Lid & Frame, 2" Slip with 1-1/2" Slip Reducers; Incl. Float and Check Valve, Basket ¹	48	10
08650-3404	U-3 Skimmer w/Gray Lid & Frame, 2" Slip with 1-1/2" Slip Reducers; Incl. Float and Check Valve, Basket; NSF ¹	48	10
08650-3404E	U-3 Skimmer Gray, w/Tan Lid & Frame, 2" Slip with 1-1/2" Slip Reducers; Incl. Float and Check Valve, Basket; NSF ¹	48	10
08650-2404	U-3 Skimmer w/Tan Lid & Frame, 2" Slip with 1-1/2" Slip Reducers; Incl. Float and Check Valve, Basket ¹	48	10
08650-4403	U-3 Skimmer w/White Lid & Frame, 2" NPT with 1-1/2" NPT Reducers; Incl. Basket	48	9
08650-6403	U-3 Skimmer w/Gray Lid & Frame, 2" NPT with 1-1/2" NPT Reducers; Incl. Basket	48	9
08650-6403E	U-3 Skimmer Gray, w/Tan Lid & Frame, 2" NPT with 1-1/2" NPT Reducers; Incl. Basket	48	9
08650-5403	U-3 Skimmer w/Tan Lid & Frame, 2" NPT with 1-1/2" NPT Reducers; Incl. Basket	48	9
08650-4404	U-3 Skimmer w/White Lid & Frame, 2" Slip with 1-1/2" Slip Reducers; Incl. Basket	48	9
08650-6404	U-3 Skimmer w/Gray Lid & Frame, 2" Slip with 1-1/2" Slip Reducers; Incl. Basket	48	9
08650-6404E	U-3 Skimmer Gray w/Tan Lid & Frame, 2" Slip with 1-1/2" Slip Reducers; Incl. Basket	48	9
08650-5404	U-3 Skimmer w/Tan Lid & Frame, 2" Slip with 1-1/2" Slip Reducers; Incl. Basket	48	9
SKIMMERS FOR VINYL POOLS			
09655-1403	Vinyl Skimmer – White; 2" NPT with 1-1/2" NPT Reducers	32	10
09655-1404	Vinyl Skimmer – White; 2" Slip with 1-1/2" Slip Reducers	32	10
09655-2403	Vinyl Skimmer – Tan; 2" NPT with 1-1/2" NPT Reducers	32	10
09655-2404	Vinyl Skimmer – Tan; 2" Slip with 1-1/2" Slip Reducers	32	10
09655-0010	Skimmer Mount Space Block (for vinyl pools only)	32	0.25

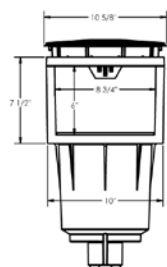
¹ NSF Certified. Only skimmers with Float Valve assemblies are NSF approved.

See page 544 for replacement parts.

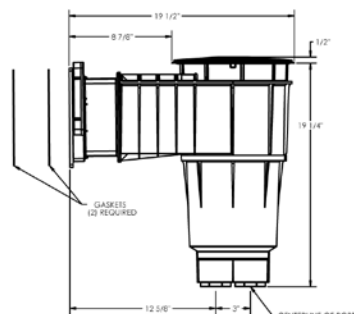
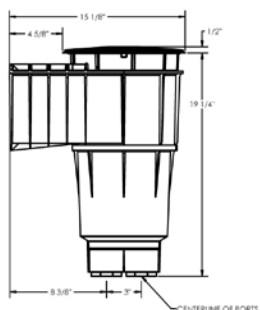
U-3 Skimmers (Cont'd)

SwimQuip® Inground Skimmers

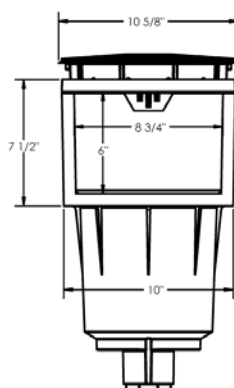
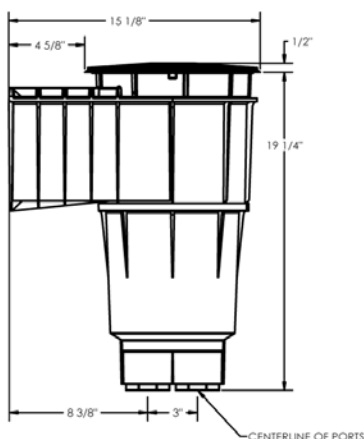
Dimensions and Performance



U3 SKIMMER
FOR CONCRETE



U3 SKIMMER
FOR VINYL



SkimClean™ Skimmer

Skimmer for Gunite Pools



Featured Highlights

- Heavy duty fiberglass body
- Small size makes the SkimClean™ skimmer great for retrofits



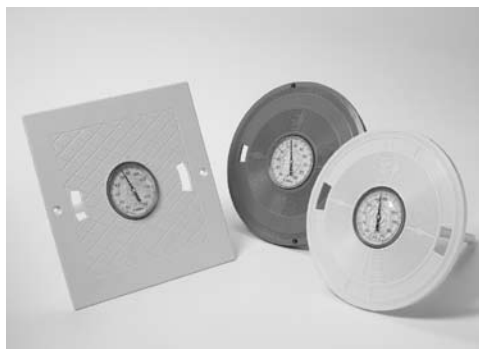
SkimClean Skimmer

Ordering Information

Product	Description	Carton Wt (Lbs)
SKIMCLEAN SKIMMERS		
501021	Residential skimmer, fiberglass body with 1-1/2 in. threaded ports, ABS	13

See page 547 for replacement parts.

Replacement Skimmer Lids with and without Thermometers



Skimmer Lids with Thermometers

Featured Highlights

- Safe and convenient
- Lids are available in 3 colors to blend with the pool environment
- Available to fit Pentair Pool Products and other popular skimmer brands

Skimmer thermometers eliminate misplacement, theft and breakage problems sometimes seen with floating thermometers. The hermetically sealed face is built for strength and weather resistance. The outside temperature will not affect the performance of the thermometer.

Ordering Information

Product	Description	Carton Qty	Carton Wt (Lbs)
SKIMMER LIDS WITH THERMOMETER			
L1	SwimQuip, Swimrite, Jacuzzi (New Style), Hayward, 9-7/8 in., white	1	0.75
L1B	SwimQuip, Swimrite, Jacuzzi (New Style), Hayward, 9-7/8 in., almond	1	0.75
L1G	SwimQuip, Swimrite, Jacuzzi (New Style), Hayward, 9-7/8 in., grey	1	0.75
L2	Baker, Hydro, 9-7/8 in., white	1	0.75
L3	Hayward, Square, 10 in. x 10 in., white	1	0.75
L4B	Pentair Pool Products, 9-3/16 in. round, almond	1	0.75
L4G	Pentair Pool Products, 9-3/16 in. round, grey	1	0.75
L4W	Pentair Pool Products, 9-3/16 in. round, white	1	0.75
L5	Pentair Pool Products, (Old Style), 8-3/8 in., white	1	0.75
L6B	Pentair Pool Products, Bermuda, 9-1/4 in., almond	1	0.75
L6G	Pentair Pool Products, Bermuda, 9-1/4 in., grey	1	0.75
L6W	Pentair Pool Products, Bermuda, 9-1/4 in., white	1	0.75
SKIMMER LIDS WITHOUT THERMOMETER			
L1RW	SwimQuip, Swimrite, Jacuzzi, Hayward (New Style), 9-7/8 in., white	1	0.75
L1RG	SwimQuip, Swimrite, Jacuzzi, Hayward (New Style), 9-7/8 in., grey	1	0.75
L1RB	SwimQuip, Swimrite, Jacuzzi, Hayward (New Style), 9-7/8 in., almond	1	0.75
L2R	Baker, Hydro, 9-7/8 in., white	1	0.75
L2RB	Baker, Hydro, 9-7/8 in., almond	1	0.75
L4RW	American Products, 9-3/16 in. round, white	1	0.75
L4RG	American Products, 9-3/16 in. round, grey	1	0.75
L4RB	American Products, 9-3/16 in. round, almond	1	0.75
L5R	Pentair Pool Products (Old Style), 8-3/8 in., white	1	0.75
L5RB	Pentair Pool Products (Old Style), 8-3/8 in., almond	1	0.75
L6RW	Pentair Pool Products, Bermuda, 9-1/4, white	1	0.75
L6RG	Pentair Pool Products, Bermuda, 9-1/4, grey	1	0.75
L6RB	Pentair Pool Products, Bermuda, 9-1/4, almond	1	0.75

See page 547 for replacement parts.

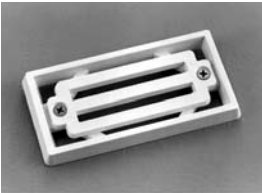
Gutter Drains

Drains and Fittings



Featured Highlights

- Pentair gutter drains come with an extra deep socket connection.



542038



542039

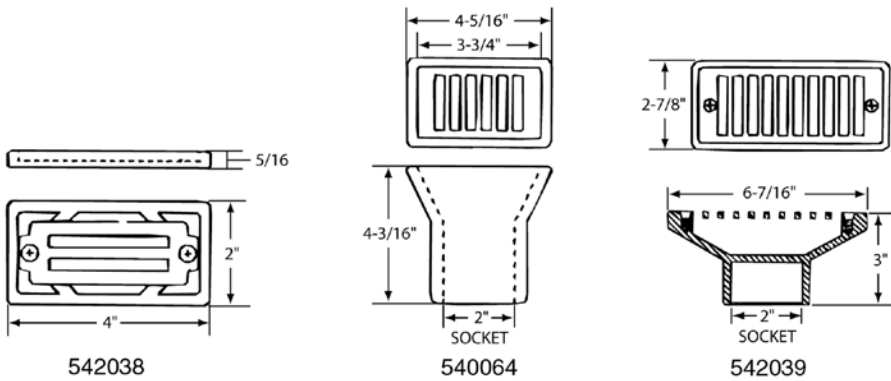


540064

Ordering Information

Product	Description	Flow Rate (GPM)	Open Area (Sq. In.)	Carton Qty
GUTTER DRAINS				
540063	2 in. x 4 in. gutter drain & grate, white	14.5 @ 1-1/2'/sec	3.09	50
540064	2 in. x 4 in. gutter drain & grate, black	14.5 @ 1-1/2'/sec	3.09	50
540065	2 in. x 4 in. gutter drain & grate, dark grey	14.5 @ 1-1/2'/sec	3.09	50
542038	2 in. x 4 in. 3-bar frame & grate, white	8.0 @ 1-1/2'/sec	1.71	500
542039	2-1/2 in. x 6 in. gutter drain & grate, white	22.5 @ 1-1/2'/sec	4.81	24
542146	2 in. x 4 in. grate (hi-style), white	14.5 @ 1-1/2'/sec	3.09	500
552511	2 in. x 4 in. grate (fits 540063, 542037)	14.5 @ 1-1/2'/sec	3.09	500

Dimensions and Performance



StarGuard® Main Drains

Main Drain Frame, Grate and Anti-Vortex Fittings



Featured Highlights

- New, Improved 8" Round Main Drain
- Now Available in Multiple Colors
- Compliant with the Virginia Graeme Baker Act

New StarGuard® main drains comply with provisions of the ANSI/ASME A112.19.8–2007 standard and the Virginia Graeme Baker Pool and Spa Safety Act. High quality StarGuard main drains are available in white, black, gray, and dark gray as well as a variety of configurations to fit any residential inground pool or spa installation. StarGuard main drains have an industry leading 15.35 square inches of open area for water flow and allow flow rates up to 72 GPM.

Ordering Information

Product	Description	Flow Rate Floor (GPM)	Flow Rate Wall (GPM)	Open Area (Sq. In.)
STARGUARD MAIN DRAIN				
500108	8" StarGuard cover w/long ring (single), white	88	79	15.35
500100	8" StarGuard cover w/long ring (single), black	88	79	15.35
500101	8" StarGuard cover w/long ring (single), dark gray	88	79	15.35
500102	8" StarGuard cover w/long ring (single), gray	88	79	15.35
500140	8" StarGuard cover w/long ring (2 pack), white	88	79	15.35
500141	8" StarGuard cover w/long ring (2 pack), black	88	79	15.35
500142	8" StarGuard cover w/long ring (2 pack), dark gray	88	79	15.35
500143	8" StarGuard cover w/long ring (2 pack), gray	88	79	15.35
500103	8" StarGuard cover w/short ring (single), white	88	79	15.35
500104	8" StarGuard cover w/short ring (single), black	88	79	15.35
500105	8" StarGuard cover w/short ring (single), dark gray	88	79	15.35
500106	8" StarGuard cover w/short ring (single), gray	88	79	15.35
500144	8" StarGuard cover w/short ring (2 pack), white	88	79	15.35
500145	8" StarGuard cover w/short ring (2 pack), black	88	79	15.35
500146	8" StarGuard cover w/short ring (2 pack), dark gray	88	79	15.35
500147	8" StarGuard cover w/short ring (2 pack), gray	88	79	15.35
500110	8" StarGuard drain w/2" side & 1.5" bottom ports ABS sump w/ring & cover (2 pack), white	106	81	15.35
500111	8" StarGuard drain w/2" side & 1.5" bottom ports ABS sump w/ring & cover (2 pack), black	106	81	15.35
500113	8" StarGuard drain w/2" side & 1.5" bottom ports ABS sump w/ring & cover (2 pack), dark gray	106	81	15.35
500114	8" StarGuard drain w/2" side & 1.5" bottom ports ABS sump w/ring & cover (2 pack), gray	106	81	15.35
500115	8" StarGuard drain w/2" side port ABS sump w/ring & cover (2 pack), white	106	81	15.35
500116	8" StarGuard drain w/2" side port ABS sump w/ring & cover (2 pack), black	106	81	15.35
500117	8" StarGuard drain w/2" side port ABS sump w/ring & cover (2 pack), dark gray	106	81	15.35
500118	8" StarGuard drain w/2" side port ABS sump w/ring & cover (2 pack), gray	106	81	15.35
500120	8" StarGuard drain w/dual 2" bottom ports ABS sump & cover (2 pack), white	79	75	15.35
500121	8" StarGuard drain w/dual 2" bottom ports ABS sump & cover (2 pack), black	79	75	15.35
500122	8" StarGuard drain w/dual 2" bottom ports ABS sump & cover (2 pack), dark gray	79	75	15.35
500123	8" StarGuard drain w/dual 2" bottom ports ABS sump & cover (2 pack), gray	79	75	15.35
500130	8" StarGuard drain w/2" side & 1.5" bottom vinyl liner ABS sump (2 pack), white	107	93	15.35

Equalizer/Suction Fittings



New Pentair equalizer/suction fittings comply with provisions of the ANSI/ASME A112.19.8?2007 standard and the Virginia Graeme Baker Pool and Spa Safety Act. These high-quality equalizer/suction fittings are available in white, black, or gray to fit any residential or commercial pool or spa installation.



Ordering Information

Product	Description	Flow Rate Floor (GPM)	Flow Rate Wall (GPM)	Open Area (Sq. In.)
EQUALIZER/SUCTION FITTINGS				
500300	Flat Face Equalizer/Suction Fitting 2" Slip, White ABS w/ 1.5" Reducer	36	36	3.75
500301	Flat Face Equalizer/Suction Fitting 2" Slip, Black ABS w/1.5" Reducer	36	36	3.75
500302	Flat Face Equalizer/Suction Fitting 2" Slip, Gray ABS w/ 1.5" Reducer	36	36	3.75

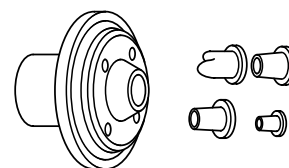
Pool Specialty Fittings



Pentair plumbing unions are available in a wide variety of configurations. Specialty fittings such as the snap lock wall fitting, anchor cup and rope hooks and the molded recessed steps are designed for ease of installation. Deck valve lid and ring allow for access to under deck valves and fittings. These fittings are manufactured to Pentair's high standards.

Ordering Information

Product	Description	Carton Qty	Carton Wt (Lbs)
ENERGY EFFICIENT FITTINGS			
178741	Sweep Elbow, PVC, White, 2.5" Socket, 3" Spigot. W=.75	1	0.92
COMPLETE INSIDER WALL INLET FITTINGS FOR CONCRETE POOLS			
08428-0000	1-1/4 in. Slip, 3/16 in., 1/2 in., 3/4 in., 90° Nozzles, white	1	0.50.
08429-0000	1-1/2 in. Slip, 3/16 in., 1/2 in., 3/4 in., 90° Nozzles, white	1	0.50
08428-0100	1-1/4 in. Slip, 3/16 in., 1/2 in., 3/4 in., 90° Nozzles, dark gray	1	0.50
08429-0100	1-1/2 in. Slip, 3/16 in., 1/2 in., 3/4 in., 90° Nozzles, dark gray	1	0.50
EYEBALL INSIDER INLET FITTINGS			
08434-0000	1-1/2 in. Slip, 1/2 in., 3/4 in., 90° Nozzles, white	1	0.50
08434-0100	1-1/2 in. Slip, 1/2 in., 3/4 in., 90° Nozzles, dark gray	1	0.50
VINYL POOL FITTINGS			
08430-0050	1-1/2 in. NPT body PVC, white	1	1.
08430-0000	1-1/2 in. Slip body PVC, white	1	1.
HYDROSTATIC RELIEF VALVE			
07017-0151	1-1/2 in. NPT hydrostatic valve		0.2
07017-0158	2 in. NPT hydrostatic valve		0.2
ALL PURPOSE PLUGS			
195830	2 in. plug with O-ring		100
552612	1-1/2 in. flush plug, white		100
552614	1-1/2 in. flush plug, black		100
552622	1-1/2 in. plug with O-ring, white		100
552624	1-1/2 in. plug with O-ring, black		100
SPECIAL EYEBALL FITTINGS			
86204200	Reducer adapter, 1-1/2 in. o.d. x 1 in. slip, 1 in., white	50	10
86204211	Reducer adapter, 1-1/2 in. o.d. x 1 in. slip, 1 in., black	50	10
86204215	Reducer adapter, 1-1/2 in. o.d. x 1 in. slip, 1 in., dark grey	50	10
JETS FOR CONCRETE INSTALLATION			
46540000	Venturi Jet, 5/16 in. nozzle, 1/2 in. socket air x 1-1/2 in. socket water, 1-1/2 in. socket return	40	20
46540100	Venturi Jet, 1/2 in. nozzle	40	20



Wall inlet fittings



Eyeball inlet fittings



Hydrostatic Relief Valve



2 in. plug with O-ring



1-1/2 in. plug with O-ring



86204200



46540000



46550000



Pool Specialty Fittings

Ordering Information



Union



Vacuum Plug



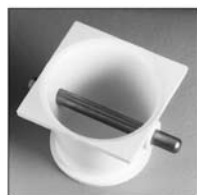
86201500



Rope Hook



Valve Lid & Ring ABS



542044

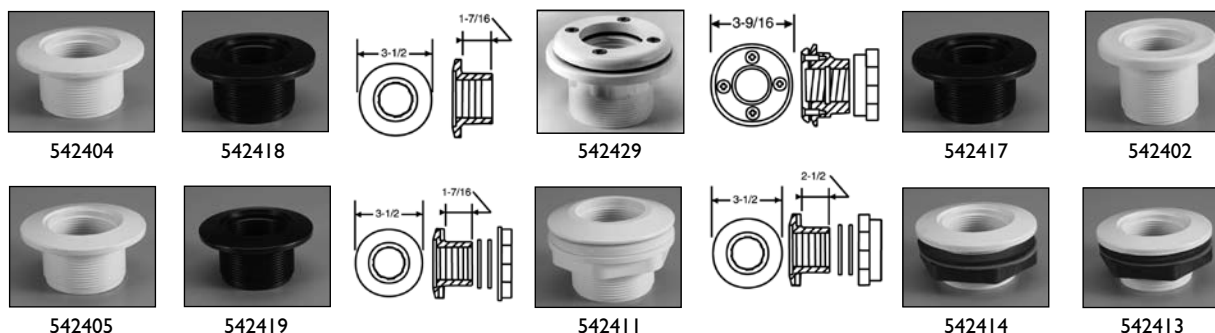


542142

Product	Description	Carton Qty	Carton Wt (Lbs)
FLOOR INLET FITTINGS⁵			
08417-0000	2 in. Slip with 1-1/2 in. slip bushing, white ⁵	1	1
08417-0100	2 in. Slip with 1-1/2 in. slip bushing, grey ⁵	1	1
08417-0200	2 in. Slip with 1-1/2 in. slip bushing, black ⁵	1	1
SPECIAL FITTINGS			
46550000	Aerator Cap, 1-1/2 in. for air channel, white	50	13
46550015	Aerator Cap, 1-1/2 in. for air channel, dark grey	50	13
46550065	Aerator Cap, 1-1/2 in. for air channel, grey	50	13
510166	Hose adapter, straight, white ⁶	50	3
86201500	Aerator inlet (used as a return spray nozzle)	10	1
K12500	Snap Lock Kit Fitting	1	0.10
GVV9530	Vac-port fitting, NSF listed	1	0.10
86200500	Vacuum or Winterizing plug with Oring	1	0.50
UNIONS			
86203600	1-1/2 in. socket, 2 in. spigot. x 1-1/2 in. socket ²	1	0.5
86204300	1-1/2 in. MPT x 1-1/2 socket	1	0.5
86205000	1-1/2 in. socket, 2 in. spigot. x 1-1/2 in. socket ¹	1	0.5
VALVE COVERS			
86300100	Valve Lid & Ring, ABS, 6 in., white	1	1
86300130	Valve Lid & Ring, ABS, 6 in., beige	1	1
GRATE INSERTS			
540056	Grate insert, 1-1/2 in. MIP, white ⁴	50	2
540057	Grate insert, 1-1/2 in. MIP, black ⁴	50	2
540058	Grate insert, 1-1/2 in. MIP, dark grey ⁴	50	2
ROPE ANCHORS & HOOKS			
542044	Anchor Cup with SS bar, white ³	100	24
542045	Anchor Cup with SS bar, black ³	100	24
86201200	Anchor Cup, ABS, white	100	16
86201215	Anchor Cup, ABS dark grey	100	16
86201300	Anchor Cup, ABS with SS cross bar, white ³	100	16
86201400	Rope Hook, 3/4 in., ABS	150	16
542142	Rope Hook for 3/4 in. rope with two SS screws	200	22
STEPS			
82400600	ABS Steps, set of three, blue	1	3
82400700	ABS Steps, set of three, white	1	3
82400800	ABS Steps, set of three, grey	1	3

¹ 2 in. long spigot² 2 in. shrt. spigot³ Not for use with saltwater pools⁴ Not for use as a suction fitting⁵ Use only as a floor inlet fitting.⁶ Hose to NPT fittings

Return Fittings For Swimming Pools

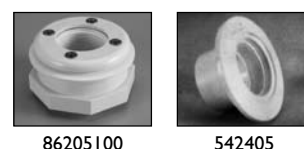


Ordering Information

Product	Description	Carton Qty	Carton Wt (Lbs)
GUNITE/CONCRETE			
542402	Long body, 1-1/2 in. threaded x 1-1/2 in. socket, white	50	9
542417	Long body, 1-1/2 in. threaded x 1-1/2 in. socket, black	50	9
542404	Standard body, 1-1/2 in. threaded x 1-1/2 in. threaded, white	50	9
542405	Standard body, 1-1/2 in. threaded x 1-1/2 in. socket, white	50	9
542418	Standard body, 1-1/2 in. threaded x 1-1/2 in. threaded, black	50	9
542419	Standard body, 1-1/2 in. threaded x 1-1/2 in. socket, black	50	9
FIBERGLASS POOLS & SPAS ²			
542411	Long body, 1-1/2 in. threaded x 1-1/2 in. socket, spacer/locknut, white	50	9
542413	Standard body, 1-1/2 in. threaded x 1-1/2 in. threaded, spacer/locknut, white	50	9
542414	Standard body, 1-1/2 in. threaded x 1-1/2 in. socket, comb. spacer/locknut, white	50	9
CONCRETE-WALLED VINYL LINER POOLS ¹			
542429	Standard body, 1-1/2 in. threaded x 1-1/2 in. socket, white	50	9
VINYL LINER FITTINGS			
86205100	1-1/2 in. FIPT with screws, vinyl liner, white	50	25
86205101	1-1/2 in. FIPT with screws, vinyl liner, black	50	25
86205103	1-1/2 in. FIPT with screws, vinyl liner, dark grey	50	25
545100	Face plate for vinyl liner return fitting, white	50	10
545101	Face plate for vinyl liner return fitting, black	50	10
545103	Face plate for vinyl liner return fitting, dark grey	50	10
INSIDER FITTINGS FOR GUNITE/CONCRETE POOLS			
542423	2 in. slip body, for schedule 40 pvc pipe, white	50	7
542424	2 in. slip body, for schedule 40 pvc pipe, black	50	7

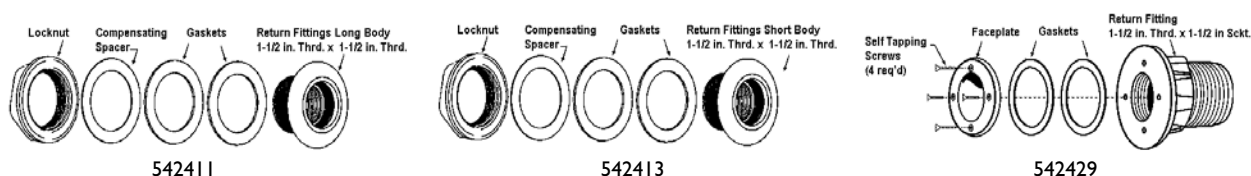
¹ Includes face plate, screws & gaskets

² Includes back gaskets



86205100

542405



542411

542413

542429

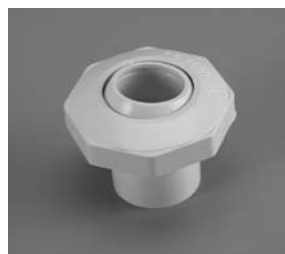
Wall Fittings-Inlets



Directional eyeball inlets with 1-1/2 in. MIP thread to fit standard female adapter or wall fitting



Insider directional inlet wall fittings with 1/2, 3/4, 1 in. and slotted openings



Economy Insider 542000

Ordering Information

Product	Description	Carton Qty
1-1/2 INCH THREADED DIRECTIONAL EYEBALLS		
542087	Ultimate eyeball 1-1/2 in. threaded with snap-in disks, 1/2 in., 3/4 in., 1 in., and pressure test orifices, white	50
540000	Slotted opening, white	50
540001	Slotted opening, black	50
540002	Slotted opening, dark grey	50
540007	3/8 in. opening, white	50
540008	3/8 in. opening, black	50
540009	3/8 in. opening, dark grey	50
540014	1/2 in. opening, white	50
540015	1/2 in. opening, black	50
540016	1/2 in. opening, dark grey	50
540021	3/4 in. opening, white	50
540022	3/4 in. opening, black	50
540023	3/4 in. opening, dark grey	50
540028	1 in. opening, white	50
540029	1 in. opening, black	50
540030	1 in. opening, dark grey	50
ECONOMY INSIDER		
542000	1 in. slip inlet with snap-in 3/8 in., 3/4 in. and pressure test disks, white	300
542001	1 in. slip inlet with snap-in 3/8 in., 3/4 in. and pressure test disks, black	300
542002	1-1/2 in. slip inlet with snap-in 1/2 in., 3/4 in., 1 in., and pressure test disks, white	200
542003	1-1/2 in. slip inlet with snap-in 1/2 in., 3/4 in., 1 in., and pressure test disks, black	200
INSIDER DIRECTIONAL FITTINGS		
540035	1-1/2 in. slip inlet, 1/2 in., white	50
540036	1-1/2 in. slip inlet, 1/2 in., black	50
540037	1-1/2 in. slip inlet, 1/2 in., dark grey	50
540042	1-1/2 in. slip inlet, 3/4 in., white	50
540043	1-1/2 in. slip inlet, 3/4 in., black	50
540044	1-1/2 in. slip inlet, 3/4 in., dark grey	50
540049	1-1/2 in. slip inlet, 1 in., white	50
540050	1-1/2 in. slip inlet, 1 in., black	50
540051	1-1/2 in. slip inlet, 1 in., dark grey	50

Automatic Water Fillers

Water Level Control



Automatic Water Fillers

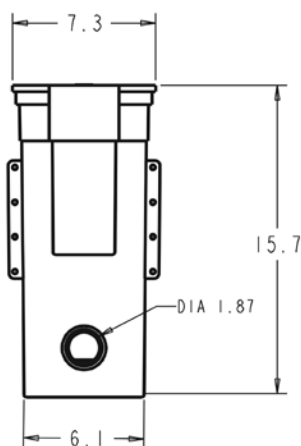
Featured Highlights

- Available for standard in-ground and vanishing edge pools
- Prevents equipment damage due to low water levels
- No electronic controls
- Prevents water waste and landscape damage due to overfilling pool
- Available with white, black, grey, and almond colored lids

Automatic Water fillers are the latest in automatic pool and spa water level controls and are available for both standard and vanishing edge pools.

Ordering Information

Product	Description	Carton Qty
AUTOMATIC WATER FILLERS		
T40BBE	AutoFill w/ brass float, almond	1
T40BBK	AutoFill w/ brass float, black	1
T40BG	AutoFill w/ brass float, grey	1
T40BW	AutoFill w/ brass float, white	1
T40FB	AutoFill w/ Fluidmaster® valve, almond	1
T40FBK	AutoFill w/ Fluidmaster valve, black	1
T40FG	AutoFill w/ Fluidmaster valve, grey	1
T40FW	AutoFill w/ Fluidmaster valve, white	1
T40FNB	AutoFill Vanishing Edge w/ Fluidmaster valve, almond	1
T40FNBK	AutoFill Vanishing Edge w/ Fluidmaster valve, black	1
T40FNG	AutoFill Vanishing Edge w/ Fluidmaster valve, grey	1
T40FNW	AutoFill Vanishing Edge w/ Fluidmaster valve, white	1

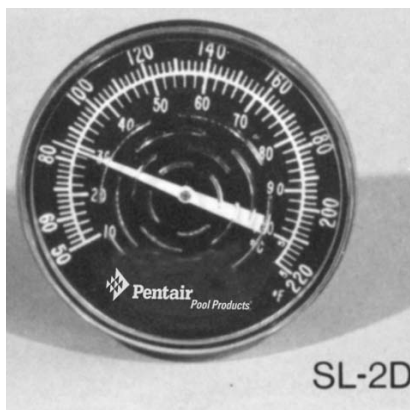


Fluidmaster Valve

See page 549 for replacement parts.

Inline Thermometers

For Pool and Solar Applications



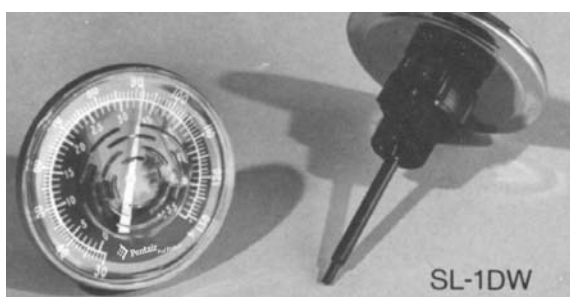
SL-2D



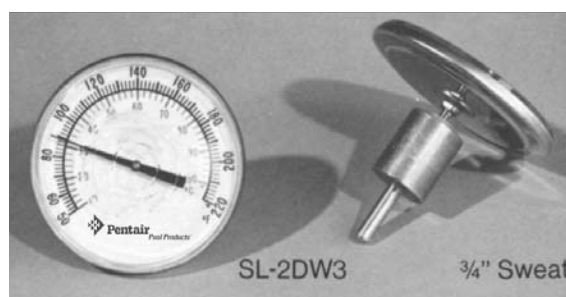
SL-2D

Ordering Information

Product	Description	Carton Qty
INLINE THERMOMETER WELLS		
SWB	1/2 in. Brass well	1
SWB1	3/4 in. Brass well	1
SWN	Nylon well	1
INLINE THERMOMETER for Solar Applications		
SL2D	50/220° F. w/ 1/2 in. NPT (threaded)	1
SL2DW	50/220° F. w/ 1/2 in. Brass well	1
SL2DW3	50/220° F. w/ 3/4 in. Brass well	1
INLINE THERMOMETERS for Pool Applications		
SL1DW	30/130° F. w/ Nylon well	1

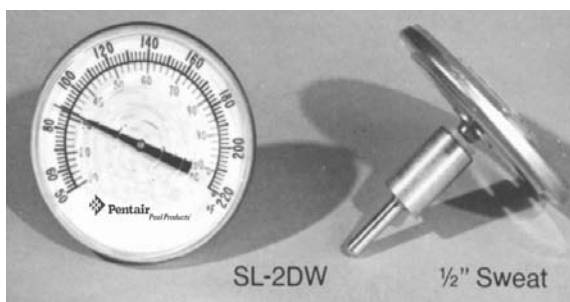


SL-1DW



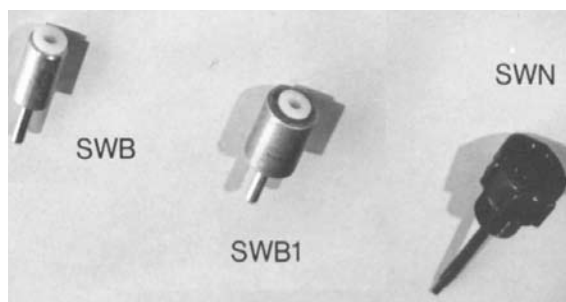
SL-2DW3

3/4" Sweat



SL-2DW

1/2" Sweat



SWB

SWB1

SWN

Flowmeters

For Commercial and Industrial Liquid Applications



Flowmeter

Featured Highlights

- Stainless steel guide and floats
- Easy installation and maintenance; no tools required, tightens by hand
- Textured surface on back of meter for improved readability
- Easy to read GPM and LPM Scales
- Brass threaded knurled nuts for durability

Ordering Information

Product	GPM	Description	Carton Qty	Carton Wt (Lbs)
SMALL BODY FLOWMETERS				
LDF356B	0.5 - 5	1/2 in., Brass sweat end	1	1
LDF360B	0.5 - 5	3/4 in., Brass sweat end	1	1
LDF360N	0.5 - 5	3/4 in., Nylon threaded end	1	.75
LDF360T	0.5 - 5	1 in., Brass threaded end	1	1.25
LDF357B	1 - 10	3/4 in., Brass sweat end	1	1
LDF357N	1 - 10	3/4 in., Nylon threaded end	1	.75
LDF357T	1 - 10	1 in., Brass threaded end	1	1.25
LDF359B	2 - 16	3/4 in., Brass sweat end	1	1
LDF359N	2 - 16	3/4 in., Nylon threaded end	1	.75
LDF359T	2 - 16	1 in., Brass threaded end	1	1.25
LARGE BODY FLOWMETERS				
LDF450B	2 - 40	1 in., Brass sweat end	1	1.25
LDF450T	2 - 40	1 in., Brass threaded end	1	1.25
LDF460T	2 - 40	1-1/2 in., Brass threaded end	1	1.5
LDF451B	8 - 75	1 in., Brass sweat end	1	1.25
LDF451T	8 - 75	1 in., Brass threaded end	1	1.25
LDF461T	8 - 75	1-1/2 in., Brass threaded end	1	1.5
LDF452B	15 - 100	1 in., Brass sweat end	1	1.25
LDF452T	15 - 100	1 in., Brass threaded end	1	1.25
LDF462T	15 - 100	1-1/2 in., Brass threaded end	1	1.5

See page 550 for replacement parts.